

Tecofi

VALVE MANUFACTURER - FRANCE



**OUR VALVES FOR
MINING INDUSTRY**



PINCH KNIFE GATE VALVES

*Wafer type bidirectional knife gate valve. One-piece cast iron body. Stainless steel gate.
Two rubber sleeves. Provides high flow rates with low pressure drop.
Various seat materials available. Face to face dimension in accordance with Tecofi standard.*



● GENERAL APPLICATIONS

This knife gate valve is suitable for working in the mining industry, in loaded fluid transport lines, such as : water with stones, sludge, etc. and in general it is used for abrasive fluids in the chemical industry and waste water.

Designed for the following applications:

- Mining
- Sewage treatment
- Electrical power stations
- Chemical plants
- Energy Sector
- Thermal power stations

● FEATURES

Stainless steel stem to prevent oxidation, ensuring durability and performance.
Reinforced natural rubber sleeve for robustness, reliability, and full flow when in the open position.
SS304 gate, polished on both sides, ensuring optimal cutting of the fluid.

● SIZES

DN50 to DN1400 (upper sizes on request).

● DIFFERENTIAL PRESSURE

	PN max
DN50 to DN600	10 bar
DN700 to DN1400	6 bar

The pressures indicated in the table, can be used in both directions.

● DIRECTIVES

Machinery Directive: DIR 2006/42/EC (MACHINERY)
Pressure Equipment Directive: DIR 97/23/EC (PED) ART.3, P.3
Potential Explosive Atmospheres Directive: DIR 94/9/EC (ATEX) CAT.3 ZONE 2 and 22
GD for further information on categories and zones please contact the Tecofi Technical Commercial Dept.

Knife gate valves for MINING INDUSTRY



● FLANGE DRILL HOLE

DIN PN10 & ANSI B16.5
(150 LB)

Naturel rubber seat
resistant to abrasion



KNIFE GATE VALVES

Leader in the manufacturing of knife gate valves, Tecofi has a large range able to respond to all needs and applications.



DUCTILE IRON KNIFE GATE VALVE*

VG



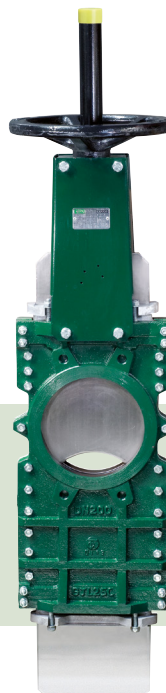
UNDER SILO KNIFE GATE VALVE*

VGS



THROUGH CONDUIT KNIFE GATE VALVE*

VGT



HIGH PRESSURE KNIFE GATE VALVE*

VGH



*All these references are also available in a Stainless Steel version upon request.

This valve suits to difficult applications, such as pasty products and powders.

This knife gate valve is specially designed for under-silo installation, enabling the removal of dry products like dust or grains. Blowing holes prevent product build-up and jamming of the gate.

This two-piece valve has no retention areas and features dual seat seals for bi-directional tightness. It's ideal for pulp outlets in the pulp and paper industry, with a gate movement resembling a 'cigar cutter'.

This unidirectional rising stem valve has bolted bonnet for high pressure use.

Dimensions comply with EN558 Series 16 standard. Adapted for sanitation, powdery, high pressure applications.

APPLICATION

Pulp and paper Water treatment Wine industry Powders	Silo Cement Powders	Paper industry with impurities (staples)	Pulp, water, waste water, chemical products and crystalline powder, brewing, cement factory and the food industry
---	---------------------------	---	---

WORKING PRESSURE

DN50/250: 10 bar DN300/450: 7 bar DN500/600: 4 bar DN700/1200: 2 bar	DN50/150: 2,5 bar DN200: 2 bar DN250/300: 1,5 bar DN400: 1,3 bar	DN50/250: 10 bar DN300/450: 6 bar DN500/600: 3,5 bar DN700/1200: 2 bar	DN50/450: 25 bar
---	---	---	------------------



BUTTERFLY VALVES

The butterfly valve is a 1/4 turn valve which also allows you to do regulation. These valves are especially adapted for general uses and non-viscous industrial fluids.

BUTTERFLY VALVE WITH SLEEVE



The butterfly valve with sleeve is particularly suitable for general fluids, such as water, oils and acids.

APPLICATIONS

HVAC
Water treatment
Industry

WORKING PRESSURE

DN40/300 : 16 bar

BUTTERFLY VALVE WITH FLANGES



Between flanges or double flanges, this valve is used for neutral liquids such as water.

APPLICATIONS

Water treatment

WORKING PRESSURE

DN350/1200 : 10 bar
Option : 16 bar on request

HIGH PERFORMANCE BUTTERFLY VALVE



The high performance butterfly valve respond to the most restrictive operating conditions in terms of pressure and temperature.

APPLICATIONS

Steam, Chemical products

WORKING PRESSURE

DN50/600 : 16/25/40/64 bar,
ASA150/300Lbs





PINCH VALVES

The pinch valve is a full bore valve that shuts via manual handwheel or via pneumatic air. It is mainly used in the waste water industry, for sludge, or in the case of abrasive products like pneumatic conveying, or conveying powders or pulverulent substances...

MANUAL PINCH VALVE



CONSTRUCTION

Cast aluminum body with handwheel operator

REPLACABLE SLEEVE

Natural rubber anti-abrasion / EPDM / NBR Butyl / Hypalon / FPM / Neoprene

WORKING PRESSURE

DN10/65 : 4 bar
DN80/200 : 3 bar



Available with a double acting actuator

PNEUMATIC PINCH VALVE



CONSTRUCTION

Cast aluminum body operated by air under pressure.

PINCH

Natural rubber anti-abrasion / EPDM / NBR / Neoprene / Butyl / Hypalon / FPM

WORKING PRESSURE

DN40/150 : 6 bar
DN200 : 4 bar
DN250 : 2.5 bar

OTHERS

RESILIENT SEAT GATE VALVE



Rubber-seated gate valves are designed for use in water supply and treatment applications, as well as for irrigation and sanitation.

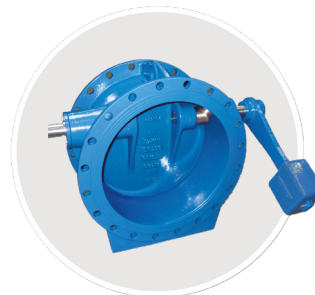
APPLICATION

Wastewater, drinking water supply and irrigation.

WORKING PRESSURE

DN40/600 : 16 or 25 bar
DN600/1200 : 10 bar

TILTING CHECK VALVE



Tilting type check valves are suitable for fluid transfer applications in networks requiring protection against flow reversal.

APPLICATION

Water, wastewater

WORKING PRESSURE
DN200/1200 : 16 bar

QUICK-CLOSING CHECK VALVE



Quick-closing non-return check valve to secure the water networks. Excellent dynamic solution. Low pressure loss.

APPLICATION

Water

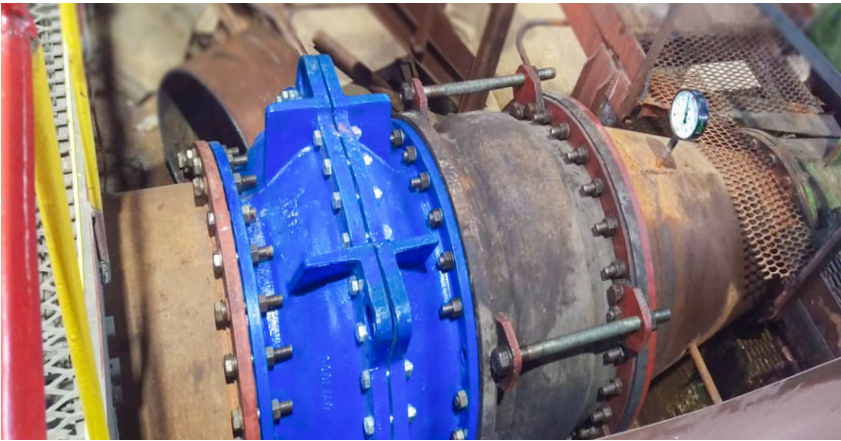
WORKING PRESSURE
DN50/500 : 50 bar max



SOME REFERENCES



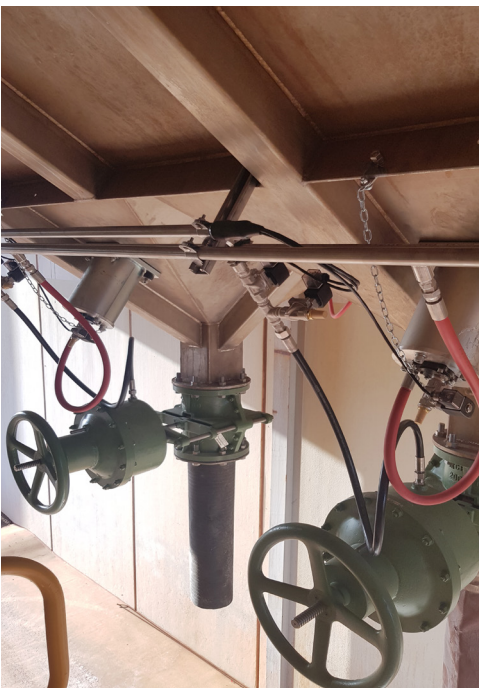
Tunnel EURALPIN - FRANCE



Mining - UKRAINE

Tecofi

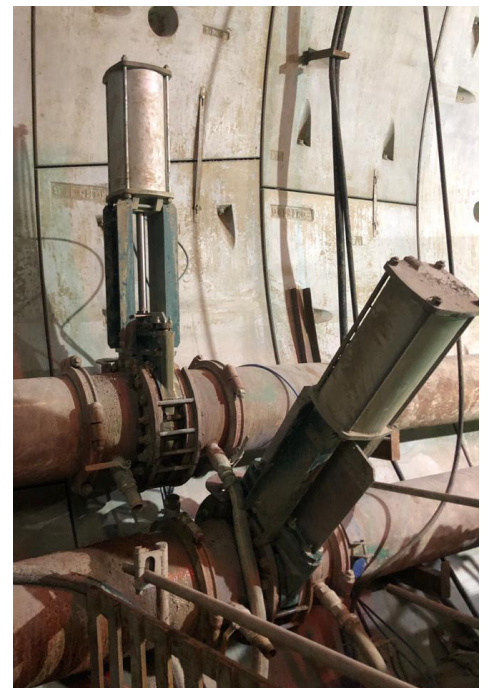
VALVE MANUFACTURER - FRANCE



Mining - AUSTRALIA



Mining - POLAND



Tunnel - ITALY