



CLAPET | FILTRE CHECK VALVE | STRAINER

CLAPETS AXIAUX
AXIAL CHECK VALVES

162 > 168

CLAPETS À BOULE
BALL CHECK VALVES

169 > 170

CLAPETS À BATTANT
SWING CHECK VALVES

171 > 177

CLAPETS À SOUPAPE
LIFT CHECK VALVES

178

NEW

CLAPETS D'EXTREMITÉ
TERMINAL CHECK VALVES

179

CLAPETS À PAPILLON
TILTING CHECK VALVES

180

DISCONNECTEURS
BACKFLOW
PREVENTERS

181

CONSEILS TECHNIQUES
TECHNICAL NOTES

182 > 184

FILTRES
STRAINERS

185 > 191

NEW

FILTRES À PANIER
BASKET STRAINERS

192

BOÎTES À BOUE
FLANGED H-STRAINERS

193

CLAPET DE NON RETOUR À FERMETURE RAPIDE

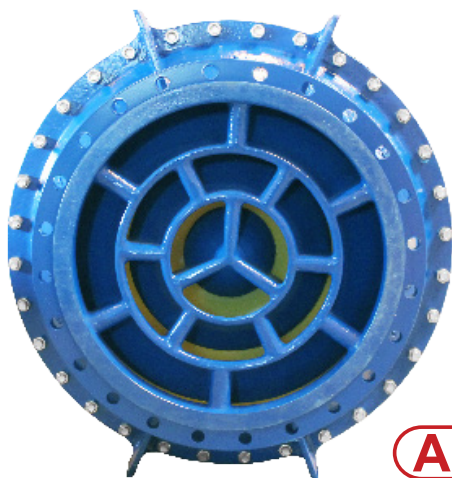
QUICK-CLOSING NON-RETURN CHECK VALVE

NEW



Clapet de haute qualité à faible inertie pour assurer la sécurité de vos réseaux d'eau.

High quality, low inertia check valve to secure your water networks.



ACS



- ✓ Minimise les coups de bélier - **Excellente réponse dynamique**
Prevents water hammer - Excellent dynamic solution
- ✓ Fonctionne en toutes positions d'installation : ressort inox de rappel
Used in all installation positions: Stainless steel counter spring
- ✓ Excellent comportement hydraulique : faibles pertes de charge
Optimum hydraulic operation: low pressure loss (optimal flow)
- ✓ Manoeuvre silencieuse - Absence de vibration
Operates silently - No vibration
- ✓ Étanchéité 100% en position fermée
100% sealing in closed position
- ✓ Absence de maintenance de part sa conception
No maintenance due to its design (no seat gasket, no obturator wear)
- ✓ Robuste et résistant : corps et anneau en fonte ductile GGG40
Ressort Inox 302 | *Robust and resistant: body and ring in ductile iron GGG40 - Stainless steel spring 302*
- ✓ Revêtement époxy ACS épaisseur minimum 250microns
Epoxy coating minimum thickness 250microns
- ✓ Certifié ACS pour eau potable
ACS certification for potable water



Conception Innovante

- ✓ Obturateur léger et de faible inertie (course limitée à 1/10 du diamètre nominal).
- ✓ Obturateur en polyuréthane qui absorbe les chocs.
- ✓ Absence de pièce mécanique.
- ✓ Profil hydraulique permettant un écoulement optimal.
- ✓ Gamme unique : raccordement entre-bridés PN10/16/25/40/ASA150/ASA300.

Innovative design

- ✓ Light-weight obturator with low inertia (short operation travel limited to 1/10th of nominal diameter).
- ✓ Obturator made of polyurethane to absorb the shocks.
- ✓ No mechanical parts.
- ✓ Hydraulic design allowing optimal flow.
- ✓ Unique range: wafer type for PN10/16/25/40/ASA150/300 flanges.

CA4460

Clapet de non retour à fermeture rapide entre brides PN10-16-25-40-ASA150-ASA300
Quick-closing non-return valve PN10-16-20-25-40-ASA150-ASA300



Corps : Fonte ductile EN-GJS-400-15 (GGG40)
Anneau : Fonte ductile EN-GJS-400-15 (GGG40)
Obturateur : Polyuréthane
Ressort : Inox 302
Étanchéité : SBR
Raccordement : Entre brides PN10, PN16, PN25, PN40, ASA150, ASA300
Pression de service max : 40 bar
Température de service max : +60°C

Body: Ductile iron EN-GJS-400-15 (GGG40)
Ring: Ductile iron EN-GJS-400-15 (GGG40)
Obturator: Polyurethane
Spring: Stainless steel 302
Seal: SBR
Connection: Between flanges PN10, PN16, PN25, PN40, ASA150, ASA300
Maximum working pressure: 40 bar
Maximum working temperature: +60°C

ACS



Gamme unique et complète
PN10/16/25/40/ASA150/ASA300
One single and complete range
PN10/16/25/40/ASA150/ASA300

| DN | L (mm) | | Kg | Ref. |
|-------|--------|------|-----|-------------|
| | mm | inch | | |
| 50 | 2" | 50 | 1 | CA4460-0050 |
| 65/80 | 3" | 80 | 2 | CA4460-0080 |
| 100 | 4" | 100 | 6 | CA4460-0100 |
| 125 | 5" | 125 | 11 | CA4460-0125 |
| 150 | 6" | 150 | 17 | CA4460-0150 |
| 200 | 8" | 127 | 22 | CA4460-0200 |
| 250 | 10" | 146 | 35 | CA4460-0250 |
| 300 | 12" | 181 | 50 | CA4460-0300 |
| 350 | 14" | 222 | 80 | CA4460-0350 |
| 400 | 16" | 232 | 100 | CA4460-0400 |
| 450 | 18" | 260 | 135 | CA4460-0450 |
| 500 | 20" | 292 | 180 | CA4460-0500 |



CA4200 | CA4240 | CA4250 | CA4260

Clapet de non retour à fermeture rapide à brides grand DN ACS

Quick-closing non-return valve, large sizes ACS



Corps : Fonte ductile EN-GJS-400-15 (GGG40)
 Anneau : Fonte ductile EN-GJS-400-15 (GGG40)
 Obturateur : Elastomère de polyuréthane
 Ressort de compression : Inox 302
 Étanchéité : SBR
 Raccordement : À brides PN10; PN16; PN25; PN40
 Pression de service : 10/16/20/25/40 bar
 Température de service max : +60°C
 Prix sur demande
 ASA 150 / 300 sur demande

Body: Ductile iron EN-GJS-400-15 (GGG40)
 Ring: Ductile Iron EN-GJS-400-15 (GGG40)
 Obturator: Polyurethane
 Spring: Stainless steel 302
 Seal: SBR
 Connection: Flanged PN10; PN16; PN25; PN40
 Working pressure: 10/16/20/25/40 bar
 Maximum working temperature: +60°C
 Prices on request
 ASA 150/300 on request



| DN | | L (mm) | Kg* | PN10 | PN16 | PN25 | PN40 |
|------|------|--------|------|-------------|-------------|-------------|-------------|
| mm | inch | | | Ref. | Ref. | Ref. | Ref. |
| 600 | 24" | 435 | 500 | CA4200-0600 | CA4240-0600 | CA4250-0600 | CA4260-0600 |
| 700 | 28" | 500 | 800 | CA4200-0700 | CA4240-0700 | CA4250-0700 | CA4260-0700 |
| 800 | 32" | 515 | 1000 | CA4200-0800 | CA4240-0800 | CA4250-0800 | CA4260-0800 |
| 900 | 36" | 710 | 1700 | CA4200-0900 | CA4240-0900 | CA4250-0900 | CA4260-0900 |
| 1000 | 40" | 730 | 1900 | CA4200-1000 | CA4240-1000 | CA4250-1000 | CA4260-1000 |
| 1200 | 48" | 900 | 3400 | CA4200-1200 | CA4240-1200 | CA4250-1200 | CA4260-1200 |

*susceptible de changement, DN supérieurs sur demande / change possible, other DN on request

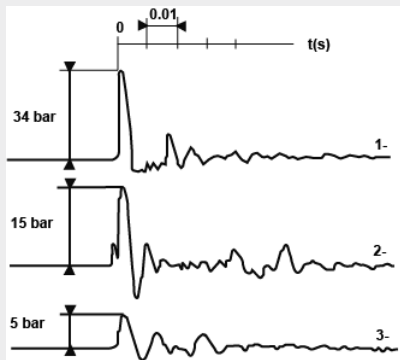
Clapet de non retour à fermeture rapide à brides grand DN **NON ACS**

Quick-closing non-return valve, large sizes NON ACS

| DN | | L (mm) | Kg* | PN10 | PN16 | PN25 | PN40 |
|------|------|--------|------|--------------|--------------|--------------|--------------|
| mm | inch | | | Ref. | Ref. | Ref. | Ref. |
| 600 | 24" | 435 | 500 | CA4200A-0600 | CA4240A-0600 | CA4250A-0600 | CA4260A-0600 |
| 700 | 28" | 500 | 800 | CA4200A-0700 | CA4240A-0700 | CA4250A-0700 | CA4260A-0700 |
| 800 | 32" | 515 | 1000 | CA4200A-0800 | CA4240A-0800 | CA4250A-0800 | CA4260A-0800 |
| 900 | 36" | 710 | 1700 | CA4200A-0900 | CA4240A-0900 | CA4250A-0900 | CA4260A-0900 |
| 1000 | 40" | 730 | 1900 | CA4200A-1000 | CA4240A-1000 | CA4250A-1000 | CA4260A-1000 |
| 1200 | 48" | 900 | 3400 | CA4200A-1200 | CA4240A-1200 | CA4250A-1200 | CA4260A-1200 |

*susceptible de changement, DN supérieurs sur demande / change possible, other DN on request

ASSUREZ LA SÉCURITÉ DE VOS RÉSEAUX D'EAU !
ENSURE THE SECURITY OF YOUR WATER NETWORKS!



Excellente réponse dynamique
Excellent dynamic response

Exemple d'enregistrements de la surpression durant la fermeture de plusieurs types de clapets de non-retour, dans les mêmes conditions de fonctionnement.

Sample of overpressure records taken during water hammer tests of various types of check valves operating under identical conditions.

- 1 - Clapet à simple battant (wafer swing check valve)
- 2 - Clapet double battant (dual plate check valve)
- 3 - Clapet à fermeture rapide TECOFI CA4460, CA4240, CA4250, CA4260 (TECOFI quick-closing check valve)



CLAPETS AXIAUX
AXIAL TYPE CHECK VALVES

CA1103

Clapet axial laiton femelle BSP "toutes positions"

All position female BSP check valve



Corps : Laiton CW617N
Clapet : ABS
Ressort : Inox
Étanchéité : Nitrile
Raccordement : Femelle / Femelle BSP
Pression de service : 16 bar
Température de service : -20°C/+100°C

Body: Brass CW617N
Disc: ABS
Spring: Stainless steel
Seal: Nitrile
Connection: Female / Female BSP
Working pressure: 16 bar
Working temperature: -20°C/+100°C

JUSQU'À ÉPUISEMENT DES STOCKS
WHILE STOCKS LAST

| DN | | L (mm) | Kg | Ref. |
|----|-------|--------|------|-------------|
| mm | inch | | | |
| 15 | 1/2" | 45 | 0,12 | CA1103-0015 |
| 20 | 3/4" | 48 | 0,18 | CA1103-0020 |
| 25 | 1" | 54,5 | 0,24 | CA1103-0025 |
| 32 | 1"1/4 | 58 | 0,33 | CA1103-0032 |
| 40 | 1"1/2 | 65,5 | 0,50 | CA1103-0040 |
| 50 | 2" | 71,5 | 0,70 | CA1103-0050 |

CC1142

Clapet crépine femelle BSP "toutes positions"

Female BSP all position foot type check valve



Corps : Laiton
Clapet : Nylon
Étanchéité : Nitrile
Crépine : Inox 304
Raccordement : Femelle / Femelle BSP
Pression de service : 8 à 16 bar
Température de service : 0°C/+65°C

Body: Brass
Disc: Nylon
Seal: Nitrile
Strainer: Stainless steel 304
Connection: Female / Female BSP
Working pressure: 8 to 16 bar
Working temperature: 0°C/+65°C

JUSQU'À ÉPUISEMENT DES STOCKS
WHILE STOCKS LAST

| DN | | L (mm) | Kg | Ref. |
|-----|-------|--------|------|-------------|
| mm | inch | | | |
| 15 | 1/2" | 34,5 | 0,10 | CC1142-0015 |
| 20 | 3/4" | 42 | 0,12 | CC1142-0020 |
| 25 | 1" | 47,5 | 0,16 | CC1142-0025 |
| 32 | 1"1/4 | 59,5 | 0,22 | CC1142-0032 |
| 40 | 1"1/2 | 71 | 0,33 | CC1142-0040 |
| 50 | 2" | 86,5 | 0,5 | CC1142-0050 |
| 65 | 2"1/2 | 102 | 1,02 | CC1142-0065 |
| 80 | 3" | 125 | 1,35 | CC1142-0080 |
| 100 | 4" | 155 | 1,85 | CC1142-0100 |

CA1142

Clapet axial laiton femelle BSP "toutes positions"

Female BSP all position axial type check valve



Corps : 2 pièces Laiton CW617N
Obtuteur : Nylon
Ressort : Acier Inoxydable
Étanchéité : Nitrile
Raccordement : Femelle / Femelle BSP
Pression de service : 16 bar
Température de service : -20°C/+100°C

Body: 2-piece Brass CW617N
Disc: Nylon
Spring: Stainless steel
Seal: Nitrile
Connection: Female / Female BSP
Working pressure: 16 bar
Working temperature: -20°C/+100°C

NEW

(ACS) En cours / In progress

| DN | | L (mm) | Kg | Ref. |
|-----|-------|--------|------|-------------|
| mm | inch | | | |
| 15 | 1/2" | 46,5 | 0,11 | CA1142-0015 |
| 20 | 3/4" | 50 | 0,16 | CA1142-0020 |
| 25 | 1" | 57 | 0,21 | CA1142-0025 |
| 32 | 1"1/4 | 60,5 | 0,33 | CA1142-0032 |
| 40 | 1"1/2 | 71 | 0,52 | CA1142-0040 |
| 50 | 2" | 74,5 | 0,74 | CA1142-0050 |
| 65 | 2"1/2 | 100 | 1,14 | CA1142-0065 |
| 80 | 3" | 109,5 | 1,71 | CA1142-0080 |
| 100 | 4" | 114 | 3,10 | CA1142-0100 |

CC1142A

Clapet crépine femelle BSP "toutes positions"

Female BSP all position foot type check valve



Corps : Laiton
Clapet : Nylon
Étanchéité : Nitrile
Crépine : Inox 304
Raccordement : Femelle / Femelle BSP
Pression de service max : 16 bar
Température de service : -20°C/+100°C

Body: Brass
Disc: Nylon
Seal: Nitrile
Strainer: Stainless steel 304
Connection: Female / Female BSP
Maximum working pressure: 16 bar
Working temperature: -20°C/+100°C

NEW

| DN | | L (mm) | Kg | Ref. |
|----|-------|--------|-------|--------------|
| mm | inch | | | |
| 15 | 1/2" | 67,3 | 0,075 | CC1142A-0015 |
| 20 | 3/4" | 78,5 | 0,11 | CC1142A-0020 |
| 25 | 1" | 90 | 0,14 | CC1142A-0025 |
| 32 | 1"1/4 | 102 | 0,22 | CC1142A-0032 |
| 40 | 1"1/2 | 117,5 | 0,36 | CC1142A-0040 |
| 50 | 2" | 134,5 | 0,52 | CC1142A-0050 |

CR3201 | CR6146

Crépines Inox pour clapet

Stainless steel screens for check valves



Matière CR3201 : Inox 316
Matière CR6146 : Inox 304 + bague fileté en Nylon
Raccordement : Mâle BSP

Material CR3201: Stainless steel 316
Material CR6146: Stainless steel 304 + Nylon male threaded
Connection: BSP male

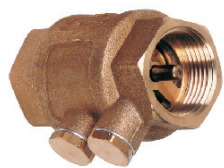
NEW

(ACS) En cours / In progress

| DN | | Ref. |
|-----|-------|----------------------------|
| mm | inch | |
| 10 | 3/8" | CR3201-0010 |
| 15 | 1/2" | CR3201-0015 CR6146-0015 |
| 20 | 3/4" | CR3201-0020 CR6146-0020 |
| 25 | 1" | CR3201-0025 CR6146-0025 |
| 32 | 1"1/4 | CR3201-0032 CR6146-0032 |
| 40 | 1"1/2 | CR3201-0040 CR6146-0040 |
| 50 | 2" | CR3201-0050 CR6146-0050 |
| 65 | 2"1/2 | CR3201-0065 CR6146-0065 |
| 80 | 3" | CR3201-0080 CR6146-0080 |
| 100 | 4" | CR3201-0100 CR6146-0100 |

CA1102

Clapet anti-pollution femelle BSP
Female BSP threaded antipollution check valve



Corps : Laiton CW617N brossé
Disque : Inox 304
Étanchéité : Joint FKM
Raccordement : Femelle BSP
Pression de service max :
Du 3/8" au 1" 25 bar
Du 1 1/4 au 2" 18 bar
Température de service max. :
-10°C/+100°C
Avec bouchon de purge amont et aval

Body: CW617N Brass
Disc: Inox 304
Seal: FKM
Connection: female BSP
Maximum working pressure:
3/8" to 1" 25 bar
1 1/4 to 2" 18 bar
Maximum working temperature:
-10°C/+100°C
With upstream and downstream drain plug

| DN | | L (mm) | Kg | Ref. |
|----|--------|--------|------|-------------|
| mm | inch | | | |
| 10 | 3/8" | 63 | 0,23 | CA1102-0010 |
| 15 | 1/2" | 68,5 | 0,24 | CA1102-0015 |
| 20 | 3/4" | 69,5 | 0,40 | CA1102-0020 |
| 25 | 1" | 79 | 0,46 | CA1102-0025 |
| 32 | 1 1/4" | 84 | 0,67 | CA1102-0032 |
| 40 | 1 1/2" | 93,5 | 0,98 | CA1102-0040 |
| 50 | 2" | 108 | 1,45 | CA1102-0050 |



A placer après votre compteur d'eau : empêche le retour de l'eau dans le réseau de distribution (antipollution). Le CA1102 possède 2 bouchons : un en amont servant à contrôler l'étanchéité du clapet et un deuxième bouchon aval servant à contrôler la qualité de l'eau et éventuellement purger l'installation.
To be placed after you water meter: prevents water from returning into the distribution network (antipollution). The threaded type antipollution check valve CA1102 has two caps, one upstream for controlling the seal of the check valve and the other downstream for controlling the quality of the water and for purging the installation.

CA6469

Clapet axial anti-retour à ressort entre brides
Wafer type axial non-return check valve with spring



Corps : Inox A351 CF8M
Obturbateur : Inox A351 CF8M
Ressort : Inox 316
Étanchéité : Métal / métal
Guide et visserie : Inox 316
Raccordement :
Entre brides PN10/16/25/40/ASA150
Pression de service : 40 bar
Température de service : -60°C/+300°C
(conditions d'utilisation voir le passeport technique)

Body: Stainless steel A351 CF8M
Disc: Stainless steel A351 CF8M
Spring: Stainless steel 316
Seal: Metal / metal
Cover and bolts: Stainless steel 316
Connection:
Between flanges PN10/16/25/40/ASA150
Working pressure: 40 bar
Working temperature: -60°C/+300°C
(conditions of use see technical sheet)

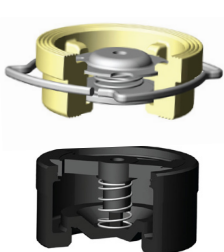


Encombrement réduit, faibles pertes de charge
Small face to face, low head losses

| DN | | L (mm) | Kg | Ref. |
|-----|--------|--------|------|-------------|
| mm | inch | | | |
| 15 | 1/2" | 16 | 0,11 | CA6469-0015 |
| 20 | 3/4" | 19 | 0,20 | CA6469-0020 |
| 25 | 1" | 22 | 0,30 | CA6469-0025 |
| 32 | 1 1/4" | 28 | 0,50 | CA6469-0032 |
| 40 | 1 1/2" | 32 | 0,60 | CA6469-0040 |
| 50 | 2" | 40 | 1 | CA6469-0050 |
| 65 | 2 1/2" | 46 | 1,35 | CA6469-0065 |
| 80 | 3" | 50 | 2 | CA6469-0080 |
| 100 | 4" | 60 | 3,2 | CA6469-0100 |
| 125 | 5" | 90 | 7,6 | CA6469-0125 |
| 150 | 6" | 106 | 11 | CA6469-0150 |
| 200 | 8" | 140 | 19 | CA6469-0200 |
| 250 | 10" | 145 | 28 | CA6469-0250 |
| 300 | 12" | 160 | 38 | CA6469-0300 |

CA7441

Clapet axial à ressort entre brides
Wafer type axial type swing check valve



Corps : Laiton DN32-100
Fonte ductile GGG50 DN125-200
Disque : Inox DN32-100
Fonte ductile GGG50 DN125-200
Guide : Inox DN32-100
Fonte ductile GGG50 DN125-200
Ressort : Inox
Étanchéité : Métal / métal
Raccordement :
DN32-150: entre brides PN10/PN16
DN200: entre brides PN16
Pression de service max : 16 bar
Température de service : -10°C/+120°C

Body: Brass DN32-100
Ductile iron GGG50 DN125-200
Disc: Stainless steel DN32-100
Ductile iron GGG50 DN125-200
Guide: Stainless steel DN32-100
Ductile iron GGG50 DN125-200
Spring: Stainless steel
Seal: Metal / metal
Connection:
DN32-150: Between flanges PN10/PN16
DN200: between flanges PN16
Maximum working pressure: 16 bar
Working temperature: -10°C/+120°C

| DN | | L (mm) | Kg | Ref. |
|-----|--------|--------|------|-------------|
| mm | inch | | | |
| 32 | 1 1/4" | 28 | 0,46 | CA7441-0032 |
| 40 | 1 1/2" | 31,5 | 0,62 | CA7441-0040 |
| 50 | 2" | 40 | 0,98 | CA7441-0050 |
| 65 | 2 1/2" | 46 | 1,36 | CA7441-0065 |
| 80 | 3" | 50 | 2,08 | CA7441-0080 |
| 100 | 4" | 60 | 3,03 | CA7441-0100 |
| 125 | 5" | 90 | 6,80 | CA7441-0125 |
| 150 | 6" | 106 | 10 | CA7441-0150 |
| 200 | 8" | 140 | 20 | CA7441-0200 |

CA6179 BSP | CA6779 NPT | CA6979 BW | CA6379 SW

Clapet 3 pièces toutes positions

Any position 3 pieces check valve

NEW

BIENTÔT DISPONIBLE - MARS 2021
COMING SOON - MARCH 2021

CA6979 DN50 - BW



ATEX II 2 GD C T2

Montage toutes positions
All mounting positions

Corps : Inox A351 CF8M
Disque : Inox AISI 316
Ressort : Inox 316
Étanchéité : Métal / métal
Raccordement :
CA6179-MM : Femelle BSP
CA6779-MM : Femelle NPT
CA6979-MM : A Souder en Bout BW
CA6379-MM : A Souder à emboîtement SW
Pression de service max : 63 bar
Température de service : -25°C/+180°C

Body: Stainless steel A351 CF8M
Disc: Stainless steel AISI 316
Spring: Stainless steel 316
Seal: Metal / metal
Connection:
CA6179-MM: female BSP
CA6779-MM: female NPT
CA6979-MM: Butt Welding
CA6379-MM: Socket Welding
Maximum working pressure: 63 bar
Working temperature: -25°C/+180°C

| DN | | L (mm) | Kg | Ref. |
|-----|--------|--------|------|--|
| mm | inch | | | |
| 8 | 1/4" | 49 | 0,18 | CA6179-MM0008 CA6779-MM0008 CA6979-MM0008 CA6379-MM0008 |
| 10 | 3/8" | 49 | 0,18 | CA6179-MM0010 CA6779-MM0010 CA6979-MM0010 CA6379-MM0010 |
| 15 | 1/2" | 56 | 0,30 | CA6179-MM0015 CA6779-MM0015 CA6979-MM0015 CA6379-MM0015 |
| 20 | 3/4" | 65 | 0,43 | CA6179-MM0020 CA6779-MM0020 CA6979-MM0020 CA6379-MM0020 |
| 25 | 1" | 74 | 0,61 | CA6179-MM0025 CA6779-MM0025 CA6979-MM0025 CA6379-MM0025 |
| 32 | 1 1/4" | 83 | 1 | CA6179-MM0032 CA6779-MM0032 CA6979-MM0032 CA6379-MM0032 |
| 40 | 1 1/2" | 91 | 1,32 | CA6179-MM0040 CA6779-MM0040 CA6979-MM0040 CA6379-MM0040 |
| 50 | 2" | 110 | 2,14 | CA6179-MM0050 CA6779-MM0050 CA6979-MM0050 CA6379-MM0050 |
| 65 | 2 1/2" | 126 | 4 | CA6179-MM0065 CA6779-MM0065 CA6979-MM0065 CA6379-MM0065 |
| 80 | 3" | 141 | 5,71 | CA6179-MM0080 CA6779-MM0080 CA6979-MM0080 CA6379-MM0080 |
| 100 | 4" | 162 | 10 | CA6179-MM0100 CA6779-MM0100 CA6979-MM0100 CA6379-MM0100 |

CA6190

Clapet à bille toutes positions taraudé

Female BSP all mounting positions ball check valve



Corps : Inox 316
Bille : Inox 316
Ressort : Inox 304
Étanchéité : Métal / métal
Raccordement : Femelle/Femelle BSP
Pression de service max : 400 bar
Température de service : -20°C/+180°C

Body: Stainless steel 316
Ball: Stainless steel 316
Spring: Stainless steel 304
Seal: Metal / metal
Connection: BSP female
Maximum working pressure: 400 bar
Working temperature: -20°C/+180°C

| DN | | L (mm) | Kg | Ref. |
|----|------|--------|------|-------------|
| mm | inch | | | |
| 8 | 1/4" | 90 | 0,50 | CA6190-0008 |
| 10 | 3/8" | 90 | 0,50 | CA6190-0010 |
| 15 | 1/2" | 90 | 0,52 | CA6190-0015 |
| 20 | 3/4" | 130 | 0,88 | CA6190-0020 |
| 25 | 1" | 140 | 1,50 | CA6190-0025 |



CA3241 | CA3201 | CA4208A | CA4248A

Clapet axial à brides PN10/PN16
Flanged type axial check valve PN10/PN16



Corps :
DN50-300 : Fonte EN-GJL-250 (GG25)
DN350-600 : Fonte ductile EN-GJS-400-15 (GGG40)
Disque : Fonte ductile EN-GJS-400-15 (GGG40)
Guide : Fonte ductile EN-GJS-400-15 (GGG40)
Ressort :
DN50-300 : Inox 316
DN350-600 : Inox 304
Étanchéité : Nitrile
Raccordement : À brides PN10, PN16
Pression de service max : 10 ou 16 bar
Température de service max : +100°C

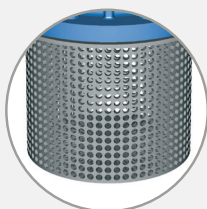
Body:
DN50-300 : Cast iron EN-GJL-250 (GG25)
DN350-600 : Ductile iron EN-GJS-400-15 (GGG40)
Disc: Ductile iron EN-GJS-400-15 (GGG40)
Guide: Ductile iron EN-GJS-400-15 (GGG40)
Spring:
DN50-300: Stainless steel 316
DN350-600: Stainless steel 304
Seal: Nitrile
Connection: Flanged PN10, PN16
Maximum working pressure: 10 or 16 bar
Maximum working temperature: +100°C

| DN | | | | Kg | PN10 | PN16 |
|-----|--------|--------|------|-----------------|--------------|-------------|
| mm | inch | L (mm) | Ref. | | Ref. | |
| 50 | 2" | 100 | 5,09 | voir / see PN16 | | CA3241-0050 |
| 65 | 2" 1/2 | 120 | 7,85 | | CA3241-0065 | |
| 80 | 3" | 140 | 9,53 | | CA3241-0080 | |
| 100 | 4" | 170 | 13,2 | | CA3241-0100 | |
| 125 | 5" | 200 | 20,5 | | CA3241-0125 | |
| 150 | 6" | 230 | 29,6 | | CA3241-0150 | |
| 200 | 8" | 300 | 47,3 | CA3201-0200 | CA3241-0200 | |
| 250 | 10" | 370 | 68 | CA3201-0250 | CA3241-0250 | |
| 300 | 12" | 410 | 112 | CA3201-0300 | CA3241-0300 | |
| 350 | 14" | 425 | 180 | CA4208A-0350 | CA4248A-0350 | |
| 400 | 16" | 475 | 240 | CA4208A-0400 | CA4248A-0400 | |
| 450 | 18" | - | - | CA4208A-0450 | CA4248A-0450 | |
| 500 | 20" | 587 | 380 | CA4208A-0500 | CA4248A-0500 | |
| 600 | 24" | 710 | 590 | CA4208A-0600 | CA4248A-0600 | |

CLAPET/FILTRE
CHECK VALVE/STRAINER

PRODUIT ASSOCIÉ | RELATED PRODUCT

Crépine pour clapet axial à brides PN10 ou PN16
Strainer for flanged type axial check valve PN10 or PN16



Raccordement : Montage sur bride
Connection: Flange mounting

Acier galvanisé / Galvanized steel

| DN | | PN10 | PN16 |
|-----|--------|-----------------|--------------------|
| mm | inch | Ref. | Ref. |
| 50 | 2" | voir / see PN16 | CA3241CREPINE-0050 |
| 65 | 2" 1/2 | | CA3241CREPINE-0065 |
| 80 | 3" | | CA3241CREPINE-0080 |
| 100 | 4" | | CA3241CREPINE-0100 |
| 125 | 5" | | CA3241CREPINE-0125 |
| 150 | 6" | | CA3241CREPINE-0150 |
| 200 | 8" | CR5200-0200 | CA3241CREPINE-0200 |
| 250 | 10" | CR5200-0250 | CA3241CREPINE-0250 |
| 300 | 12" | CR5200-0300 | CA3241CREPINE-0300 |
| 350 | 14" | CR5200-0350 | CR5240-0350 |
| 400 | 16" | CR5200-0400 | CR5240-0400 |
| 450 | 18" | CR5200-0450 | CR5240-0450 |
| 500 | 20" | CR5200-0500 | CR5240-0500 |
| 600 | 24" | CR5200-0600 | CR5240-0600 |

Inox 304 / Stainless steel 304

| DN | | PN10 | PN16 |
|-----|--------|-----------------|---------------------|
| mm | inch | Ref. | Ref. |
| 50 | 2" | voir / see PN16 | CA3241CREPINOX-0050 |
| 65 | 2" 1/2 | | CA3241CREPINOX-0065 |
| 80 | 3" | | CA3241CREPINOX-0080 |
| 100 | 4" | | CA3241CREPINOX-0100 |
| 125 | 5" | | CA3241CREPINOX-0125 |
| 150 | 6" | | CA3241CREPINOX-0150 |
| 200 | 8" | | CA3241CREPINOX-0200 |
| 250 | 10" | | CA3241CREPINOX-0250 |
| 300 | 12" | | CA3241CREPINOX-0300 |

Inox 304L / Stainless steel 304L

| | | | |
|-----|-----|-------------|-------------|
| 350 | 14" | CR6200-0350 | CR6240-0350 |
| 400 | 16" | CR6200-0400 | CR6240-0400 |
| 450 | 18" | CR6200-0450 | CR6240-0450 |
| 500 | 20" | CR6200-0500 | CR6240-0500 |
| 600 | 24" | CR6200-0600 | CR6240-0600 |

Inox 316L / Stainless steel 316L

| DN | | PN10 | PN16 | |
|-----|--------|-----------------|-------------|-------------|
| mm | inch | Ref. | Ref. | |
| 50 | 2" | voir / see PN16 | CR6249-0050 | |
| 65 | 2" 1/2 | | CR6249-0065 | |
| 80 | 3" | | CR6249-0080 | |
| 100 | 4" | | CR6249-0100 | |
| 125 | 5" | | CR6249-0125 | |
| 150 | 6" | | CR6249-0150 | |
| 200 | 8" | | CR6209-0200 | CR6249-0200 |
| 250 | 10" | | CR6209-0250 | CR6249-0250 |
| 300 | 12" | | CR6209-0300 | CR6249-0300 |
| 350 | 14" | | CR6209-0350 | CR6249-0350 |
| 400 | 16" | CR6209-0400 | CR6249-0400 | |
| 450 | 18" | CR6209-0450 | CR6249-0450 | |
| 500 | 20" | CR6209-0500 | CR6249-0500 | |
| 600 | 24" | CR6209-0600 | CR6249-0600 | |

CA3242

Clapet toutes positions à brides

All mounting position flanged check valve



Corps : Fonte EN-GJL-250 Epoxy (GG25) ACS
Disque : Fonte ductile EN-GJS-400-15 (GG40)
Ressort : Inox 302
Etanchéité : EPDM ACS
Raccordement : A brides PN16 jusqu'au DN300 - PN10 au delà
Pression de service max : 16 bar
Température de service : -10°C / +120°C

Body : Cast iron EN-GJL-250 (GG25) Epoxy coated ACS
Disc : Ductile iron EN-GJS-400-15 (GG40)
Spring : Stainless steel 302
Seal : ACS EPDM
Connection : Flanged PN16 up through DN300, PN10 for all above
Maximum working pressure : 16 bar
Working temperature : -10°C / +120°C

| DN | | L (mm) | PN | Kg | Ref. |
|-----|--------|--------|----|-------|-------------|
| mm | inch | | | | |
| 50 | 2" | 100 | 16 | 5,42 | CA3242-0050 |
| 65 | 2" 1/2 | 120 | 16 | 8,22 | CA3242-0065 |
| 80 | 3" | 140 | 16 | 10,13 | CA3242-0080 |
| 100 | 4" | 165 | 16 | 13,53 | CA3242-0100 |
| 125 | 5" | 195 | 16 | 19,5 | CA3242-0125 |
| 150 | 6" | 230 | 16 | 27,07 | CA3242-0150 |
| 200 | 8" | 290 | 16 | 46,8 | CA3242-0200 |
| 250 | 10" | 355 | 16 | 77,2 | CA3242-0250 |
| 300 | 12" | 400 | 16 | 128 | CA3242-0300 |
| 350 | 14" | 480 | 10 | 260 | CA3242-0350 |
| 400 | 16" | 550 | 10 | 260 | CA3242-0400 |
| 500 | 20" | 680 | 10 | 500 | CA3242-0500 |
| 600 | 24" | 800 | 10 | 780 | CA3242-0600 |



CA4251 | CA4261

Clapet axial à brides haute pression

High pressure axial type check valve



Corps : Fonte EN-GJS-400-15 (GGG40)
Clapet : Fonte EN-GJS-400-15 (GGG40)
Ressort : Inox 304
Etanchéité : NBR
Raccordement : A brides PN25 ou PN40
Pression de service max : 25 bar - 40 bar
Température de service max : -10°C / +80°C

Body : Ductile iron EN-GJS-400-15 (GGG40)
Disc : Ductile iron EN-GJS-400-15 (GGG40)
Spring : Stainless steel 304
Seal : NBR
Connection : Flanged PN25 or PN40
Maximum working pressure : 25 bar - 40 Bar
Maximum working temperature : -10°C / +80°C

| DN | | | PN25 | | PN40 | |
|-----|--------|--------|-------------|-----|-------------|-----|
| mm | inch | L (mm) | Ref. | Kg | Ref. | Kg |
| 50 | 2" | 125 | CA4251-0050 | 6 | CA4261-0050 | 7 |
| 65 | 2" 1/2 | 145 | CA4251-0065 | 8 | CA4261-0065 | 9 |
| 80 | 3" | 155 | CA4251-0080 | 12 | CA4261-0080 | 13 |
| 100 | 4" | 175 | CA4251-0100 | 17 | CA4261-0100 | 19 |
| 125 | 5" | 200 | CA4251-0125 | 23 | CA4261-0125 | 25 |
| 150 | 6" | 225 | CA4251-0150 | 35 | CA4261-0150 | 39 |
| 200 | 8" | 275 | CA4251-0200 | 60 | CA4261-0200 | 66 |
| 250 | 10" | 325 | CA4251-0250 | 95 | CA4261-0250 | 105 |
| 300 | 12" | 375 | CA4251-0300 | 130 | CA4261-0300 | 143 |
| 350 | 14" | 425 | CA4251-0350 | 180 | CA4261-0350 | 198 |
| 400 | 16" | 475 | CA4251-0400 | 240 | CA4261-0400 | 264 |
| 450 | 18" | 500 | CA4251-0450 | 264 | CA4261-0450 | - |
| 500 | 20" | 587 | CA4251-0500 | 380 | CA4261-0500 | 418 |
| 600 | 24" | 710 | CA4251-0600 | 590 | CA4261-0600 | 650 |

Haute pression
High pressure

CEA5245 | CEA5205

Clapet d'entrée d'air acier carbone

Carbon steel air inlet check valve



Corps : Acier carbone ST37
Tige : Inox 304
Palier de guidage : Bronze
Siège : NBR
Raccordement : A brides PN10/16 suivant EN1092-1
Pression de service : 10/16 bar (voir tableau)
Body : Carbon Steel ST37 Epoxy coated
Stem : Inox 304
Bearing : Bronze
Seat : NBR
Connection : Flanged PN10/16
Working pressure : 10/16 bar (see chart)



| DN | | L (mm) | Kg | PN | Ref. |
|-----|------|--------|-----|-------|--------------|
| mm | inch | | | | |
| 50 | 2" | 280 | 17 | 10/16 | CEA5245-0050 |
| 80 | 3" | 300 | 25 | 10/16 | CEA5245-0080 |
| 100 | 4" | 340 | 33 | 10/16 | CEA5245-0100 |
| 150 | 6" | 400 | 45 | 10/16 | CEA5245-0150 |
| 200 | 8" | 470 | 66 | 10 | CEA5205-0200 |
| | | | 70 | 16 | CEA5245-0200 |
| 250 | 10" | 500 | 90 | 10 | CEA5205-0250 |
| | | | 95 | 16 | CEA5245-0250 |
| 300 | 12" | 520 | 105 | 10 | CEA5205-0300 |
| | | | 110 | 16 | CEA5245-0300 |

A monter sur col de cygne
To mount on a goose neck



Permet l'entrée d'air à grand débit dans la conduite afin d'éviter une dépression en phase de vidange.
Allows a high-flow air intake into the pipe to prevent a vacuum from forming in the emptying phase.



CLAPETS À BOULE
BALL CHECK VALVES

CBL4141

Clapet à boule femelle BSP
Female BSP ball check valve



Corps : Fonte Ductile EN-GJS-500-7 (GGG50)
Boule :
DN 25-50 : Nitrile
DN 65 : Aluminium + Nitrile
Joint : Nitrile
Raccordement : Femelle BSP
Pression de service : 10 bar
Température de service : -10°C/+90°C

Body: Ductile Iron EN-GJS-500-7 (GGG50)
Ball:
DN 25-50: NBR
DN 65: Aluminium + NBR
O-ring: NBR
Connection: Female BSP
Working pressure: 10 bar
Working temperature: -10°C/+90°C

| DN | | L (mm) | Kg | Ref. |
|----|-------|--------|-----|----------------|
| mm | inch | | | |
| 25 | 1" * | 125 | 1,3 | CBL4141-0025 * |
| 32 | 1"1/4 | 133 | 1,5 | CBL4141-0032 |
| 40 | 1"1/2 | 151 | 2,1 | CBL4141-0040 |
| 50 | 2" | 175 | 3,2 | CBL4141-0050 |
| 65 | 2"1/2 | 202 | 4,3 | CBL4141-0065 |

* non CE / not CE

CBL4240

Clapet à boule à brides
Flanged type ball check valve



Corps : Fonte Ductile EN-GJS-500-7 (GGG50)
Boule :
DN40-50 : Nitrile
DN65-80 : Aluminium + Nitrile
DN100-400 : Fonte + Nitrile
Raccordement : A brides PN10
Pression de service : 10 bar
Température de service : -10°C/+80°C

Body: Ductile Iron EN-GJS-500-7 (GGG50)
Ball:
DN40-50: NBR
DN65-80: Aluminium + NBR
DN100-400: Cast Iron + NBR
Connection: Flanged PN10
Working pressure: 10 bar
Working temperature: -10°C/+80°C

| DN | | L (mm) | Kg | Ref. | DN | | L (mm) | Kg | Ref. |
|-----|--------|--------|------|--------------|-------|------|--------|-------|--------------|
| mm | inch | | | | mm | inch | | | |
| 40 | 1" 1/2 | 180 | 5,6 | CBL4240-0040 | 250 | 10" | 600 | 125,3 | CBL4240-0250 |
| 50 | 2" | 200 | 7,5 | CBL4240-0050 | 300 | 12" | 700 | 177 | CBL4240-0300 |
| 65 | 2" 1/2 | 240 | 10,1 | CBL4240-0065 | 350 | 14" | 800 | 276 | CBL4240-0350 |
| 80 | 3" | 260 | 12,8 | CBL4240-0080 | 400 | 16" | 900 | 423 | CBL4240-0400 |
| 100 | 4" | 300 | 18,4 | CBL4240-0100 | 450* | 18" | 1000 | 500 | CBL4240-0450 |
| 125 | 5" | 350 | 30,2 | CBL4240-0125 | 500* | 20" | 1100 | 680 | CBL4240-0500 |
| 150 | 6" | 400 | 38,5 | CBL4240-0150 | 600 * | 24" | 1300 | 1095 | CBL4240-0600 |
| 200 | 8" | 500 | 76 | CBL4240-0200 | | | | | |

* non CE / not CE



Anneau de levage sur le chapeau (jusqu'au DN400) équilibrant le clapet pour une manutention aisée lors de la pose de la conduite. Montage horizontal ou vertical avec fluide ascendant. Lifting hook on the bonnet (up to the DN400) for easy handling. Can be mounted horizontally or vertically but with flow going down to up.

PRODUITS ASSOCIÉS | RELATED PRODUCTS

CBL4240JOINT

Joint de chapeau pour clapet CBL4240
Bonnet gasket for CBL4240 ball check valve



Matière : NBR
Material: NBR

| DN | | Ref. | DN | | Ref. |
|-----|--------|-------------------|-----|------|-------------------|
| mm | inch | | mm | inch | |
| 40 | 1" 1/2 | CBL4240JOINT-0040 | 150 | 6" | CBL4240JOINT-0150 |
| 50 | 2" | CBL4240JOINT-0050 | 200 | 8" | CBL4240JOINT-0200 |
| 65 | 2" 1/2 | CBL4240JOINT-0065 | 250 | 10" | CBL4240JOINT-0250 |
| 80 | 3" | CBL4240JOINT-0080 | 300 | 12" | CBL4240JOINT-0300 |
| 100 | 4" | CBL4240JOINT-0100 | 350 | 14" | CBL4240JOINT-0350 |
| 125 | 5" | CBL4240JOINT-0125 | 400 | 16" | CBL4240JOINT-0400 |

DN450 au 600 sur demande / DN450 up to 600 on request

CBL4240BOU

Boule nitrile pour clapet CBL4240
Nitrile ball for CBL4240 ball check valve



Boule autonettoyante revêtue nitrile
Nitrile-coated self-cleaning steel ball

| DN | | Ref. | DN | | Ref. |
|-----|--------|-------------------|-----|------|-------------------|
| mm | inch | | mm | inch | |
| 40 | 1" 1/2 | CBL4240BOU-NI0040 | 150 | 6" | CBL4240BOU-NI0150 |
| 50 | 2" | CBL4240BOU-NI0050 | 200 | 8" | CBL4240BOU-NI0200 |
| 65 | 2" 1/2 | CBL4240BOU-NI0065 | 250 | 10" | CBL4240BOU-NI0250 |
| 80 | 3" | CBL4240BOU-NI0080 | 300 | 12" | CBL4240BOU-NI0300 |
| 100 | 4" | CBL4240BOU-NI0100 | 350 | 14" | CBL4240BOU-NI0350 |
| 125 | 5" | CBL4240BOU-NI0125 | 400 | 16" | CBL4240BOU-NI0400 |

DN450 au 600 sur demande / DN450 up to 600 on request

CBL4230

ASA 150

Clapet à boule à brides en fonte ductile - ASA150

Flanged Ductile iron ball check valve - ASA150



Corps et chapeau :
Fonte ductile EN-GJS-500-7 (GGG50)
Boule : Fonte revêtue Nitrile
Joint de chapeau : Nitrile
Raccordement : À brides ASA150
Pression de service : 10 bar
Température de service : -10°C/+80°C

NEW

Body and cover: Ductile iron EN-GJS-500-7 (GGG50)
Ball: NBR
O-ring: NBR
Connection: Flanged ASA150
Working pressure: 10 bar
Working temperature: -10°C/+80°C

| DN | | L (mm) | Kg | Ref. |
|-----|--------|--------|-------|--------------|
| mm | inch | | | |
| 40 | 1" 1/2 | 180 | 5,6 | CBL4230-0040 |
| 50 | 2" | 200 | 7,5 | CBL4230-0050 |
| 65 | 2" 1/2 | 240 | 10,1 | CBL4230-0065 |
| 80 | 3" | 260 | 12,8 | CBL4230-0080 |
| 100 | 4" | 300 | 18,4 | CBL4230-0100 |
| 125 | 5" | 350 | 30,2 | CBL4230-0125 |
| 150 | 6" | 400 | 38,5 | CBL4230-0150 |
| 200 | 8" | 500 | 76 | CBL4230-0200 |
| 250 | 10" | 600 | 125,3 | CBL4230-0250 |



Anneau de levage sur le chapeau équilibrant le clapet pour une manutention aisée lors de la pose de la conduite. Montage horizontal ou vertical avec fluide ascendant. Lifting hook on the bonnet for easy handling. Can be mounted horizontally or vertically but with flow going down to up.

CBL420G

Application abrasive | Abrasive application

Clapet à boule application abrasive - PN10

Flanged Ductile iron ball check valve for abrasive application - PN10



Corps et chapeau :
Fonte ductile EN-GJS400-15 revêtue de gomme naturelle anti-abrasive
Boule : Polyuréthane
Boulonnerie : Acier inoxydable A2
Raccordement : À brides PN10
Pression de service max: 10 bar
Température de service : -10°C/+80°C

NEW

Body and cover:
Ductil iron EN-GJS400-15 with anti-abrasive rubber lining
Ball: Polyurethane
Bolts: Stainless steel A2
Connection: Flanged PN10
Maximum working pressure: 10 bar
Working temperature: -10°C/+80°C

| DN | | L (mm) | Kg | Ref. |
|-----|------|--------|------|--------------|
| mm | inch | | | |
| 100 | 4" | 300 | 21,5 | CBL420G-0100 |
| 125 | 5" | 350 | 36 | CBL420G-0125 |
| 150 | 6" | 400 | 45 | CBL420G-0150 |
| 200 | 8" | 500 | 80 | CBL420G-0200 |
| 250 | 10" | 600 | 120 | CBL420G-0250 |
| 300 | 12" | 700 | 180 | CBL420G-0300 |
| 350 | 14" | 800 | 270 | CBL420G-0350 |
| 400 | 16" | 900 | 440 | CBL420G-0400 |
| 500 | 20" | 1100 | 680 | CBL420G-0500 |



**Application abrasive
Abrasive application**

CBL6149

Clapet à boule femelle BSP

Female BSP ball check valve



Corps : Inox 316 embouti
Boule : Aluminium revêtu FPM
Joint : FPM
Raccordement : Femelle BSP
Pression de service : 16 bar
Température de service : +150°C

Body: Stamped Stainless steel 316
Ball: Aluminium FPM coated
O-ring: FPM
Connection: Female BSP
Working pressure: 16 bar
Working temperature: +150°C

| DN | | L (mm) | Kg | Ref. |
|----|--------|--------|------|--------------|
| mm | inch | | | |
| 32 | 1" 1/4 | 175 | 1,1 | CBL6149-0032 |
| 40 | 1" 1/2 | 190 | 1,18 | CBL6149-0040 |
| 50 | 2" | 210 | 1,61 | CBL6149-0050 |

CBL6240

Clapet à boule à brides Inox

Flanges Stainless steel ball check valve



Corps :
DN 50-200 : Inox 316
DN 250-400 : Inox 316
Boule : Aluminium + Nitrile
Joint : Nitrile
Raccordement : À brides PN10 ou PN16
Pression de service : 16 bar jusqu'au DN150
10 bar à partir du DN200
Température de service : -10°C/+80°C

NEW

Body:
DN 50-200: Stainless steel 316
DN 250-400: Stainless steel 316
Ball: Aluminium + NBR
O-ring: NBR
Connection: Flanged PN10 or PN16
Working pressure: 16 bar until DN150
10 bar from DN200
Working temperature: -10°C/+80°C

| DN | | L (mm) | Kg | Ref. |
|-----|--------|--------|------|--------------|
| mm | inch | | | |
| 50 | 2" | 200 | 8,5 | CBL6240-0050 |
| 65 | 2" 1/2 | 240 | 12,5 | CBL6240-0065 |
| 80 | 3" | 260 | 15,6 | CBL6240-0080 |
| 100 | 4" | 300 | 21 | CBL6240-0100 |
| 125 | 5" | 350 | 30 | CBL6240-0125 |
| 150 | 6" | 400 | 41 | CBL6240-0150 |
| 200 | 8" | 500 | 69 | CBL6240-0200 |

CE





CLAPETS À BATTANT SWING CHECK VALVES

CB1102

Clapet de retenue à battant laiton femelle BSP
Female BSP brass swing check valve



Corps : Laiton
Battant : Laiton
Axe : Laiton
Étanchéité :
Du 3/8" au 2" Metal / EPDM
Du 2"1/2 au 4" Metal / NBR
Raccordement : Femelle BSP
Pression de service max : 10 bar
Température de service : 0°C/+60°C

Body: Brass
Disc: Brass
Stem: Brass
Seal:
3/8" to 2" Metal/EPDM
2"1/2 to 4" Metal/NBR
Connection: Female BSP
Maximum working pressure: 10 bar
Working temperature: 0°C/+60°C

| DN | | L (mm) | Kg | Ref. |
|-----|-------|--------|-------|-------------|
| mm | inch | | | |
| 10 | 3/8" | 47 | 0,182 | CB1102-0010 |
| 15 | 1/2" | 47 | 0,158 | CB1102-0015 |
| 20 | 3/4" | 53 | 0,231 | CB1102-0020 |
| 25 | 1" | 63 | 0,370 | CB1102-0025 |
| 32 | 1"1/4 | 74 | 0,554 | CB1102-0032 |
| 40 | 1"1/2 | 87 | 0,726 | CB1102-0040 |
| 50 | 2" | 97 | 1,268 | CB1102-0050 |
| 65 | 2"1/2 | 116 | 1,579 | CB1102-0065 |
| 80 | 3" | 135 | 2,253 | CB1102-0080 |
| 100 | 4" | 164 | 3,837 | CB1102-0100 |

CB2143

Clapet de retenue à battant bronze femelle BSP
Female BSP bronze swing check valve



Corps : Bronze
Battant : Bronze
Étanchéité : Nitrile
Raccordement : Femelle BSP
Pression de service : 20 bar
Température de service max : +80°C

Body: Bronze
Disc: Bronze
Seal: Nitrile
Connection: Female BSP
Working pressure: 20 bar
Maximum Working temperature: +80°C

**JUSQU'À ÉPUISEMENT DES STOCKS
WHILE STOCKS LAST**

| DN | | L (mm) | Kg | Ref. |
|----|-------|--------|------|-------------|
| mm | inch | | | |
| 15 | 1/2" | 49 | 0,16 | CB2143-0015 |
| 20 | 3/4" | 58 | 0,23 | CB2143-0020 |
| 25 | 1" | 68 | 0,27 | CB2143-0025 |
| 32 | 1"1/4 | 76 | 0,55 | CB2143-0032 |
| 50 | 2" | 103 | 1,13 | CB2143-0050 |

CB2143W

Clapet de retenue à battant bronze femelle BSP - WRAS
Female BSP bronze swing check valve - WRAS



Corps : Bronze
Clapet : Nitrile
Raccordement : Femelle BSP
Pression de service : 20 bar
Température de service max :
-10°C / + 100°C

Body: Bronze
Disc: NBR
Connection: Female BSP
Working pressure: 20 bar
Maximum Working temperature:
-10°C / + 100°C

**BIENTÔT DISPONIBLE
COMING SOON**

NEW

| DN | | L (mm) | Kg | Ref. |
|----|-------|--------|------|--------------|
| mm | inch | | | |
| 15 | 1/2" | 58 | 0,25 | CB2143W-0015 |
| 20 | 3/4" | 66 | 0,38 | CB2143W-0020 |
| 25 | 1" | 76 | 0,60 | CB2143W-0025 |
| 32 | 1"1/4 | 88 | 0,87 | CB2143W-0032 |
| 40 | 1"1/2 | 96 | 1,15 | CB2143W-0040 |
| 50 | 2" | 112 | 1,79 | CB2143W-0050 |

CB6140

Clapet de retenue à battant Inox femelle BSP
Female BSP Stainless steel swing check valve



Corps : ASTM A351 CF8M
Battant : ASTM A182 F304
Axe : ASTM A182 F304
Étanchéité : Métal/métal
Raccordement : Femelle BSP
Pression de service max : 16 bar
Température de service : -20°C/+200°C

Body: ASTM A351 CF8M
Disc: ASTM A182 F304
Stem: ASTM A182 F304
Seal: Metal/metal
Connection: female BSP
Maximum working pressure: 16 bar
Working temperature: -20°C/+200°C

| DN | | L (mm) | Kg | Ref. |
|----|-------|--------|-------|-------------|
| mm | inch | | | |
| 8 | 1/4" | 65 | 0,264 | CB6140-0008 |
| 10 | 3/8" | 65 | 0,280 | CB6140-0010 |
| 15 | 1/2" | 65 | 0,320 | CB6140-0015 |
| 20 | 3/4" | 80 | 0,530 | CB6140-0020 |
| 25 | 1" | 90 | 0,750 | CB6140-0025 |
| 32 | 1"1/4 | 103 | 1,030 | CB6140-0032 |
| 40 | 1"1/2 | 120 | 1,590 | CB6140-0040 |
| 50 | 2" | 141 | 2,310 | CB6140-0050 |

CB3240PN10 | CB3240PN16

Etanchéité M/M | M/M seal

Clapet à battant à brides
Flanged type swing check valve



Corps : Fonte EN-GJL-250 (GG25)
Battant : Fonte EN-GJL-250 (GG25)
Etanchéité : Laiton / laiton
Raccordement : À brides PN10 et PN16
Pression de service : 10 bar - 16 bar
Température de service max : +150°C

Body: Cast iron EN-GJL-250 (GG25)
Disc: Cast iron EN-GJL-250 (GG25)
Seal: Brass / brass
Connection: Flanged PN10 and PN16
Working pressure: 10 bar - 16 bar
Maximum Working temperature: +150°C

| DN | | L (mm) | Kg | Ref. |
|-----|-------|--------|-----|--------------------------------------|
| mm | inch | | | |
| 40 | 1 1/2 | 180 | 9 | CB3240PN16-0040 |
| 50 | 2" | 200 | 12 | CB3240PN16-0050 |
| 65 | 2 1/2 | 240 | 16 | CB3240PN16-0065 |
| 80 | 3" | 260 | 20 | CB3240PN16-0080 |
| 100 | 4" | 300 | 27 | CB3240PN16-0100 |
| 125 | 5" | 350 | 42 | CB3240PN16-0125 |
| 150 | 6" | 400 | 58 | CB3240PN16-0150 |
| 200 | 8" | 500 | 93 | CB3240PN10-0200 CB3240PN16-0200 |
| 250 | 10" | 600 | 155 | CB3240PN10-0250 CB3240PN16-0250 |
| 300 | 12" | 700 | 221 | CB3240PN10-0300 CB3240PN16-0300 |
| 350 | 14" | 800 | 306 | CB3240PN10-0350 Ⓢ CB3240PN16-0350 |
| 400 | 16" | 900 | 430 | CB3240PN10-0400 Ⓢ CB3240PN16-0400 |

CB3241PN10 | CB3241PN16

Etanchéité EPDM | EPDM seal

Clapet à battant à brides
Flanged type swing check valve



Corps : Fonte EN-GJL -250 (GG25)
Battants : Fonte EN-GJL -250 (GG25)
Etanchéité : EPDM
Raccordement : A brides PN16
Pression de service max : 16 bar
Température de service max : -10°C/80°C

Body: Cast iron EN-GJL -250 (GG25)
Disc: Cast iron EN-GJL -250 (GG25)
Seal: EPDM
Connection: Flanged PN16
Maximum working pressure: 16 bar
Maximum working temperature: -10°C/80°C

| DN | | L (mm) | Kg | Ref. |
|-----|-------|--------|-----|--------------------------------------|
| mm | inch | | | |
| 40 | 1 1/2 | 180 | 9 | CB3241PN16-0040 |
| 50 | 2" | 200 | 12 | CB3241PN16-0050 |
| 65 | 2 1/2 | 240 | 16 | CB3241PN16-0065 |
| 80 | 3" | 260 | 20 | CB3241PN16-0080 |
| 100 | 4" | 300 | 27 | CB3241PN16-0100 |
| 125 | 5" | 350 | 42 | CB3241PN16-0125 |
| 150 | 6" | 400 | 58 | CB3241PN16-0150 |
| 200 | 8" | 500 | 93 | CB3241PN16-0200 CB3241PN10-0200 |
| 250 | 10" | 600 | 155 | CB3241PN16-0250 CB3241PN10-0250 Ⓢ |
| 300 | 12" | 700 | 221 | CB3241PN16-0300 CB3241PN10-0300 Ⓢ |
| 350 | 14" | 800 | 306 | CB3241PN16-0350 CB3241PN10-0350 Ⓢ |
| 400 | 16" | 900 | 430 | CB3241PN16-0400 CB3241PN10-0400 Ⓢ |

CB4251

Haute pression | High pressure

Clapet à battant à brides PN25
Flanged PN25 swing check valve



Corps & chapeau : Fonte EN-GJS-400-15 (GGG40)
Siège : Alliage cuivreux
Axe de manoeuvre : Acier Inoxydable 420
Visserie : Acier galvanisé CLASSE 8.8
Raccordement : A brides PN25
Température de service : -10°C / +80°C

Body & Cover: Ductile Iron EN-GJS-400-15 (GGG40)
Seat: Copper alloy
Shaft: Stainless steel 420
Bolts and nuts: Carbon steel galvanized 8.8
Connection: Flanged PN25
Working temperature: -10°C / +80°C

| | DN | | L (mm) | Kg | Ref. | |
|---|---|-------|--------|------|-------------|-------------|
| | mm | inch | | | | |
| Battant Acier carbone revêtu EPDM | 40 | 1 1/2 | 180 | 10 | CB4251-0040 | |
| | 50 | 2" | 200 | 13 | CB4251-0050 | |
| | 65 | 2 1/2 | 240 | 21 | CB4251-0065 | |
| | 80 | 3" | 260 | 22 | CB4251-0080 | |
| | 100 | 4" | 300 | 25 | CB4251-0100 | |
| | 125 | 5" | 350 | 40 | CB4251-0125 | |
| | Disc Carbon steel with EPDM coating | 150 | 6" | 400 | 52 | CB4251-0150 |
| | | 200 | 8" | 450 | 149 | CB4251-0200 |
| | | 250 | 10" | 600 | 182 | CB4251-0250 |
| | | 300 | 12" | 700 | 316 | CB4251-0300 |
| 350 | | 14" | 800 | 432 | CB4251-0350 | |
| 400 | | 16" | 900 | 550 | CB4251-0400 | |
| Battant Disc GGG40 | | 450 | 18" | 1000 | 670 | CB4251-0450 |
| | | 500 | 20" | 1100 | 880 | CB4251-0500 |
| | 600 | 24" | 1300 | 1102 | CB4251-0600 | |
| | 700 | 28" | 1500 | 1800 | CB4251-0700 | |
| | 800 | 32" | 1700 | 2250 | CB4251-0800 | |



CB4261

Haute pression | High pressure

Clapet à battant à brides PN40
Flanged PN40 swing check valve



Corps & chapeau : Fonte EN-GJS-400-15 (GGG40)
Siège : Alliage cuivreux
Axe de manoeuvre : Acier Inoxydable 420
Visserie : Acier galvanisé CLASSE 8.8
Raccordement : A brides PN40
Température de service : -10°C / +80°C

Body & Cover: Ductile Iron EN-GJS-400-15 (GGG40)
Seat: Copper alloy
Shaft: Stainless steel 420
Bolts and nuts: Carbon steel galvanized 8.8
Connection: Flanged PN40
Working temperature: -10°C / +80°C

| | DN | | T L (mm) | Kg | Ref. |
|---|-----|--------|-------------|------|-------------|
| | mm | inch | | | |
| Battant Acier carbone revêtu EPDM | 40 | 1" 1/2 | 180 | 11 | CB4261-0040 |
| | 50 | 2" | 200 | 14 | CB4261-0050 |
| | 65 | 2" 1/2 | 240 | 23 | CB4261-0065 |
| | 80 | 3" | 260 | 24 | CB4261-0080 |
| | 100 | 4" | 300 | 28 | CB4261-0100 |
| | 125 | 5" | 350 | 43 | CB4261-0125 |
| Disc Carbon steel with EPDM coating | 150 | 6" | 400 | 56 | CB4261-0150 |
| | 200 | 8" | 450 | 162 | CB4261-0200 |
| | 250 | 10" | 600 | 198 | CB4261-0250 |
| | 300 | 12" | 700 | 344 | CB4261-0300 |
| Battant Disc GGG40 | 350 | 14" | 800 | 472 | CB4261-0350 |
| | 400 | 16" | 900 | 600 | CB4261-0400 |
| | 450 | 18" | 1000 | 755 | CB4261-0450 |
| | 500 | 20" | 1100 | 960 | CB4261-0500 |
| | 600 | 24" | 1300 | 1200 | CB4261-0600 |
| | 700 | 28" | 1500 | 1800 | CB4261-0700 |
| | 800 | 32" | 1700 | 2250 | CB4261-0800 |

CLAPET/FILTRE
CHECK VALVE/ STRAINER

CB4205 | 08 | 45 | 48 | 55 | 58 | 65 | 68

Clapet à battant à contrepoids | Swing check valve with counterweight

Clapet à battant à brides à contrepoids
Flanged type swing check valve with counterweight



Corps & chapeau : Fonte ductile EN-GJS-400-15 (GGG40)
Siège : Alliage cuivreux
Axe de manoeuvre : Acier Inoxydable 420
Visserie : Acier galvanisé CLASSE 8.8
Levier : Acier carbone
Contrepoids : Fonte ductile EN-GJS-400-15 (GGG40)
Raccordement : A brides (PN voir tableaux)
Température de service : -10°C / +80°C

Body & Cover: Ductile Iron EN-GJS-400-15 (GGG40)
Seat: Copper alloy
Shaft: Stainless steel 420
Bolts and nuts: Carbon steel galvanized 8.8
Lever: Carbon steel
Counterweight: Fonte EN-GJS-400-15 (GGG40)
Connection: Flanged (PN see charts)
Working temperature: -10°C / +80°C

| | DN | | T L (mm) | Kg | PN10 | PN16 | |
|---|------|--------|-------------|------|-----------------|-------------|-------------|
| | mm | inch | | | Ref. | Ref. | |
| Battant Acier carbone revêtu EPDM | 40 | 1" 1/2 | 180 | 10 | voir / see PN16 | CB4245-0040 | |
| | 50 | 2" | 200 | 15 | | CB4245-0050 | |
| | 65 | 2" 1/2 | 240 | 20 | | CB4245-0065 | |
| | 80 | 3" | 260 | 21 | | CB4245-0080 | |
| | 100 | 4" | 300 | 33 | | CB4245-0100 | |
| | 125 | 5" | 350 | 55 | | CB4245-0125 | |
| | 150 | 6" | 400 | 75 | | CB4245-0150 | |
| | 200 | 8" | 500 | 126 | | CB4205-0200 | CB4245-0200 |
| | 250 | 10" | 600 | 160 | | CB4205-0250 | CB4245-0250 |
| | 300 | 12" | 700 | 240 | | CB4205-0300 | CB4245-0300 |
| Disc Carbon steel with EPDM coating | 350 | 14" | 800 | 315 | CB4205-0350 | CB4245-0350 | |
| | 400 | 16" | 900 | 530 | CB4205-0400 | CB4245-0400 | |
| | 450 | 18" | 1000 | 650 | CB4208-0450 | CB4248-0450 | |
| | 500 | 20" | 1100 | 830 | CB4208-0500 | CB4248-0500 | |
| Battant Disc GGG40 | 600 | 24" | 1300 | 1050 | CB4208-0600 | CB4248-0600 | |
| | 700 | 28" | 1500 | 1600 | CB4208-0700 | CB4248-0700 | |
| | 800 | 32" | 1700 | 2150 | CB4208-0800 | CB4248-0800 | |
| | 1000 | 40" | 2100 | 3680 | CB4208-1000 | CB4248-1000 | |

| | DN | | T L (mm) | PN25 | | PN40 | |
|--|------|--------|-------------|-------------|------|-------------|------|
| | mm | inch | | Ref. | Kg | Ref. | Kg |
| Battant Acier carbone revêtu EPDM | 40 | 1" 1/2 | 180 | CB4255-0040 | 12 | CB4265-0040 | 16 |
| | 50 | 2" | 200 | CB4255-0050 | 17 | CB4265-0050 | 22 |
| | 65 | 2" 1/2 | 240 | CB4255-0065 | 22 | CB4265-0065 | 30 |
| | 80 | 3" | 260 | CB4255-0080 | 25 | CB4265-0080 | 33 |
| | 100 | 4" | 300 | CB4255-0100 | 35 | CB4265-0010 | 40 |
| | 125 | 5" | 350 | CB4255-0125 | 58 | CB4265-0125 | 63 |
| | 150 | 6" | 400 | CB4255-0150 | 78 | CB4265-0150 | 85 |
| | 200 | 8" | 500 | CB4255-0200 | 149 | CB4265-0200 | 176 |
| | 250 | 10" | 600 | CB4255-0250 | 170 | CB4265-0250 | 200 |
| | 300 | 12" | 700 | CB4255-0300 | 390 | CB4265-0300 | 396 |
| Disc Carbon steel with EPDM coated | 350 | 14" | 800 | CB4255-0350 | 435 | CB4265-0350 | 475 |
| | 400 | 16" | 900 | CB4255-0400 | 650 | CB4265-0400 | 656 |
| | 450 | 18" | 1000 | CB4258-0450 | 680 | CB4268-0450 | 760 |
| | 500 | 20" | 1100 | CB4258-0500 | 890 | CB4268-0500 | 966 |
| Battant Disc GGG40 | 600 | 24" | 1300 | CB4258-0600 | 1150 | CB4268-0600 | 1250 |
| | 700 | 28" | 1500 | CB4258-0700 | 1680 | CB4268-0700 | - |
| | 800 | 32" | 1700 | CB4258-0800 | 2300 | CB4268-0800 | - |
| | 1000 | 40" | 2100 | CB4258-1000 | 3150 | CB4268-1000 | - |



Contactez-nous pour toute demande de **position verticale**; nous préciser la position du clapet lors de votre demande (position livrée en horizontal en standard) ainsi que l'environnement amont/aval du clapet pour vous préconiser l'équipement le plus adapté.

Contact us for any vertical position requests: please specify the position of the check valve (position delivered horizontally as standard) as well as the upstream / downstream environment of the valve to recommend the most suitable equipment.



CLAPETS SANDWICH SWING CHECK VALVES

CB5440

Acier | Steel

Clapet sandwich entre brides acier
Steel wafer type swing check valve



Corps et battant : Acier zingué
Etanchéité : EPDM
Raccordement :
Entre-brides PN10/16 jusqu'au DN150
Entre-brides PN16 à partir du DN200
Pression de service : 16 bar jusqu'au DN150
10 bar du DN200 au DN300
Température de service max : +110°C

Body and Disc: Steel

Seal: EPDM

Connection:

Between flanges PN10/16 up to DN150

Between flanges PN16 from DN200

Working pressure: 16 bar DN40 to DN150

10 bar DN200 to DN300

Maximum Working temperature: +110°C

| DN | | L (mm) | Kg | Ref. |
|-----|--------|--------|------|-------------|
| mm | inch | | | |
| 40 | 1" 1/2 | 16 | 0,74 | CB5440-0040 |
| 50 | 2" | 16 | 0,97 | CB5440-0050 |
| 65 | 2" 1/2 | 16 | 1,34 | CB5440-0065 |
| 80 | 3" | 16 | 1,6 | CB5440-0080 |
| 100 | 4" | 16 | 1,99 | CB5440-0100 |
| 125 | 5" | 16 | 2,77 | CB5440-0125 |
| 150 | 6" | 19 | 4,06 | CB5440-0150 |
| 200 | 8" | 22 | 7,11 | CB5440-0200 |
| 250 | 10" | 32 | 14,9 | CB5440-0250 |
| 300 | 12" | 38 | 21,8 | CB5440-0300 |
| 350 | 14" | 38 | 30,1 | CB5440-0350 |
| 400 | 16" | 44 | 42,5 | CB5440-0400 |
| 450 | 18" | 50 | 68 | CB5440-0450 |
| 500 | 20" | 56 | 93 | CB5440-0500 |
| 600 | 24" | 62 | 139 | CB5440-0600 |

CB6441

Inox | Stainless steel

Clapet sandwich entre brides inox
Stainless steel wafer type swing check valve



Corps et battant : Inox 316
Etanchéité : FPM
Raccordement :
Entre-brides PN10/16 jusqu'au DN150
Entre-brides PN16 à partir du DN200
Pression de service : 16 bar
Température de service max : +170°C

Body and Disc: Stainless Steel 316

Seal: FPM

Connection:

Between flanges PN10/16 up to DN150

Between flanges PN16 from DN200

Working pressure: 16 bar

Maximum Working temperature: +170°C

| DN | | L (mm) | Kg | Ref. |
|-----|--------|--------|------|-------------|
| mm | inch | | | |
| 40 | 1" 1/2 | 16 | 0,77 | CB6441-0040 |
| 50 | 2" | 16 | 1 | CB6441-0050 |
| 65 | 2" 1/2 | 16 | 1,38 | CB6441-0065 |
| 80 | 3" | 16 | 1,65 | CB6441-0080 |
| 100 | 4" | 16 | 2,02 | CB6441-0100 |
| 125 | 5" | 16 | 2,83 | CB6441-0125 |
| 150 | 6" | 19 | 4,10 | CB6441-0150 |
| 200 | 8" | 22 | 7,18 | CB6441-0200 |
| 250 | 10" | 32 | 15,1 | CB6441-0250 |
| 300 | 12" | 38 | 22,3 | CB6441-0300 |
| 350 | 14" | 38 | 30,2 | CB6441-0350 |
| 400 | 16" | 44 | 43,5 | CB6441-0400 |
| 450 | 18" | 50 | 68 | CB6441-0450 |
| 500 | 20" | 56 | 93 | CB6441-0500 |
| 600 | 24" | 62 | 139 | CB6441-0600 |

CE

CB6441-EPA

ACS

Clapet sandwich entre brides inox
Stainless steel wafer type swing check valve



Corps et battant : Inox 316
Etanchéité : EPDM ACS
Raccordement :
Entre-brides PN10/16 jusqu'au DN150
Entre-brides PN16 à partir du DN200
Pression de service : 16 bar jusqu'au DN150
10 bar du DN200 au DN300
Température de service : -10°C/+110°C

Body and Disc: Stainless Steel 316

Seal: EPDM ACS

Connection:

Between flanges PN10/16 up to DN150

Between flanges PN16 from DN200

Working pressure: 16 bar DN40 to DN150

10 bar DN200 to DN300

Maximum Working temperature: -10°C/+110°C

| DN | | PN | L (mm) | Kg | Ref. |
|-----|--------|----|--------|-------|----------------|
| mm | inch | | | | |
| 40 | 1" 1/2 | 16 | 16 | 0,78 | CB6441-EPA0040 |
| 50 | 2" | 16 | 16 | 0,93 | CB6441-EPA0050 |
| 65 | 2" 1/2 | 16 | 16 | 1,39 | CB6441-EPA0065 |
| 80 | 3" | 16 | 16 | 1,67 | CB6441-EPA0080 |
| 100 | 4" | 16 | 16 | 2,03 | CB6441-EPA0100 |
| 125 | 5" | 16 | 16 | 2,90 | CB6441-EPA0125 |
| 150 | 6" | 16 | 19 | 4,39 | CB6441-EPA0150 |
| 200 | 8" | 10 | 22 | 9,04 | CB6441-EPA0200 |
| 250 | 10" | 10 | 32 | 15,45 | CB6441-EPA0250 |
| 300 | 12" | 10 | 38 | 23,95 | CB6441-EPA0300 |

CE ACS





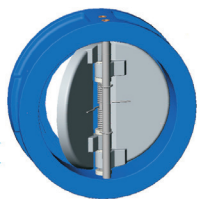
CLAPETS À DOUBLE BATTANT DUAL PLATE CHECK VALVES

CB3448N-EP

Battant fonte ductile | Ductile iron plate

Clapet double battant PN16 - battant fonte ductile

Dual plate check valve PN16 - Ductile iron plate



CE



Corps : Fonte GG25
Battant : Fonte ductile chromé
Axe : Inox 410
Ressorts : Inox 304
Étanchéité : EPDM
Pression de service : 16 bar
Raccordement : Entre-brides
DN40-600 : PN10/16
DN700-800 : PN16
Température de service max : +110°C

Body: Cast Iron GG25
Plate: Ductile iron chromed
Shaft: Stainless steel 410
Springs: Stainless steel 304
Seal: EPDM
Working pressure: 16 bar
Connection: Between flanges
DN40-600: PN10/16
DN700-800: PN16
Maximum Working temperature: +110°C

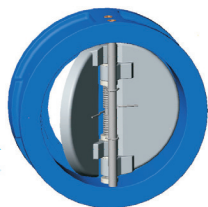
| DN | | L (mm) | Kg | Ref. |
|-----|--------|--------|------|----------------|
| mm | inch | | | |
| 40 | 1" 1/2 | 43 | 1 | CB3448N-EP0040 |
| 50 | 2" | 43 | 1,3 | CB3448N-EP0050 |
| 65 | 2" 1/2 | 46 | 1,8 | CB3448N-EP0065 |
| 80 | 3" | 64 | 3 | CB3448N-EP0080 |
| 100 | 4" | 64 | 3,9 | CB3448N-EP0100 |
| 125 | 5" | 70 | 5,7 | CB3448N-EP0125 |
| 150 | 6" | 76 | 8 | CB3448N-EP0150 |
| 200 | 8" | 89 | 14,3 | CB3448N-EP0200 |
| 250 | 10" | 114 | 24,9 | CB3448N-EP0250 |
| 300 | 12" | 114 | 33,5 | CB3448N-EP0300 |
| 350 | 14" | 127 | 55 | CB3448N-EP0350 |
| 400 | 16" | 140 | 75 | CB3448N-EP0400 |
| 450 | 18" | 152 | 101 | CB3448N-EP0450 |
| 500 | 20" | 152 | 111 | CB3448N-EP0500 |
| 600 | 24" | 178 | 172 | CB3448N-EP0600 |
| 700 | 20" | 229 | 291 | CB3448N-EP0700 |
| 800 | 24" | 241 | 390 | CB3448N-EP0800 |

CB3449-EPA

ACS

Clapet double battant ACS

ACS dual plate check valve



ACS



Corps : Fonte GG25
Battant : Inox 316
Axe : Inox 410
Ressorts : Inox 304
Étanchéité : EPDM ACS
Raccordement : Entre-Brides PN10/16
Pression de service : 16 bar
Température de service max : +110°C

Body: Cast Iron GG25
Plate: Stainless Steel 316
Shaft: Stainless steel 410
Springs: Stainless steel 304
Seal: EPDM ACS
Connection: Between flanges PN10/16
Working pressure: 16 bar
Maximum Working temperature: +110°C

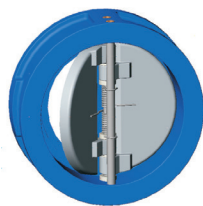
| DN | | L (mm) | Kg | Ref. |
|-----|--------|--------|------|----------------|
| mm | inch | | | |
| 40 | 1" 1/2 | 43 | 1 | CB3449-EPA0040 |
| 50 | 2" | 43 | 1,6 | CB3449-EPA0050 |
| 65 | 2" 1/2 | 46 | 2,4 | CB3449-EPA0065 |
| 80 | 3" | 64 | 3,7 | CB3449-EPA0080 |
| 100 | 4" | 64 | 4,8 | CB3449-EPA0100 |
| 125 | 5" | 70 | 6,7 | CB3449-EPA0125 |
| 150 | 6" | 76 | 9 | CB3449-EPA0150 |
| 200 | 8" | 89 | 15,6 | CB3449-EPA0200 |
| 250 | 10" | 114 | 26,9 | CB3449-EPA0250 |
| 300 | 12" | 114 | 36,8 | CB3449-EPA0300 |
| 350 | 14" | 127 | 55 | CB3449-EPA0350 |
| 400 | 16" | 140 | 73 | CB3449-EPA0400 |
| 450 | 18" | 152 | 99 | CB3449-EPA0450 |
| 500 | 20" | 152 | 117 | CB3449-EPA0500 |
| 600 | 24" | 178 | 177 | CB3449-EPA0600 |

CB4450

PN25

Clapet double battant PN25 - battant fonte ductile

Dual plate check valve PN25 - ductile iron plate



Corps : Fonte Ductile GGG40
 Battant : GGG40 chromé
 Axe : Inox 416
 Ressorts : Inox 304
 Etanchéité : EPDM
 Raccordement : Entre-Brides PN25
 Pression de service : 25 bar
 Température de service max : +110°C

Body: Ductile Iron GGG40
 Plate: GGG40 chromed
 Shaft: Stainless steel 416
 Springs: Stainless steel 304
 Seal: EPDM
 Connection: Between flanges PN25
 Working pressure: 25 bar
 Maximum working temperature: +110°C

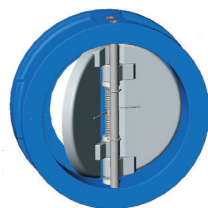
| DN | | L (mm) | Kg | Ref. |
|-----|--------|--------|------|-------------|
| mm | inch | | | |
| 40 | 1" 1/2 | 43 | 1,9 | CB4450-0040 |
| 50 | 2" | 43 | 2,2 | CB4450-0050 |
| 65 | 2" 1/2 | 46 | 3,3 | CB4450-0065 |
| 80 | 3" | 64 | 4,3 | CB4450-0080 |
| 100 | 4" | 64 | 6,6 | CB4450-0100 |
| 125 | 5" | 70 | 10,9 | CB4450-0125 |
| 150 | 6" | 76 | 12,9 | CB4450-0150 |
| 200 | 8" | 89 | 20,1 | CB4450-0200 |
| 250 | 10" | 114 | 31,4 | CB4450-0250 |
| 300 | 12" | 114 | 50 | CB4450-0300 |
| 350 | 14" | 127 | 80 | CB4450-0350 |
| 400 | 16" | 140 | 115 | CB4450-0400 |
| 450 | 18" | 152 | 145 | CB4450-0450 |
| 500 | 20" | 152 | 175 | CB4450-0500 |
| 600 | 24" | 178 | 245 | CB4450-0600 |

CB4435 | CB4439 | CB4438

ASA 150

Clapet double battant ASA150

Dual plate check valve ASA150



Corps : Fonte Ductile GGG40
 Raccordement : Entre brides ASA150Lbs
 Pression de service : 20 bar
 Température de service max : +100°C

Body: Ductile Iron GGG40
 Connection: Between flanges ASA150Lbs
 Working pressure: 20 bar
 Maximum working temperature: +100°C



| DN | | L (mm) | Kg | Ref. |
|-----|--------|--------|-----|-------------|
| mm | inch | | | |
| 50 | 2" | 43 | 1,3 | CB4435-0050 |
| 65 | 2" 1/2 | 46 | 1,8 | CB4435-0065 |
| 80 | 3" | 64 | 3,5 | CB4435-0080 |
| 100 | 4" | 64 | 4 | CB4435-0100 |
| 125 | 5" | 70 | 6 | CB4435-0125 |
| 150 | 6" | 76 | 8,5 | CB4435-0150 |
| 200 | 8" | 89 | 15 | CB4435-0200 |
| 250 | 10" | 114 | 28 | CB4439-0250 |
| 300 | 12" | 114 | 37 | CB4439-0300 |
| 350 | 14" | 127 | 52 | CB4439-0350 |
| 400 | 16" | 140 | 75 | CB4439-0400 |
| 450 | 18" | 152 | 95 | CB4438-0450 |
| 500 | 20" | 152 | 125 | CB4438-0500 |
| 600 | 24" | 178 | 180 | CB4438-0600 |

Battant : Acier A216WCB chromé
Joint : NBR

Plate : Steel A216WCB
Seal : NBR

Battant : CF8M
Joint : EPDM

Plate : CF8M
Seal : EPDM

Battant : Fonte GGG40
Joint : NBR

Plate : Iron GGG40
Seal : NBR

CB3442

Battant bronze aluminium | Aluminium bronze plate

Clapet double battant PN16 – battant bronze aluminium

Ductile iron dual plate swing check valve PN16 – aluminium bronze plate



Corps : Fonte Ductile EN-GJS-400-15
 Battant : Bronze aluminium
 Axe : Inox 316
 Ressorts : Inox 316
 Etanchéité : NBR vulcanisé
 Raccordement : Entre brides PN10/16
 Pression de service : 16 bar
 Température de service max : +80°C

Body: Ductile Iron EN-GJS-400-15
 Plate: Aluminium bronze
 Shaft: Stainless steel 316
 Springs: Stainless steel 316
 Seal: NBR
 Connection: Between flanges PN10/16
 Working pressure: 16 bar
 Working temperature: +80°C

| DN | | L (mm) | Kg | Ref. |
|-----|--------|--------|------|-------------|
| mm | inch | | | |
| 50 | 2" | 54 | 1,65 | CB3442-0050 |
| 65 | 2" 1/2 | 54 | 2,4 | CB3442-0065 |
| 80 | 3" | 57 | 3,1 | CB3442-0080 |
| 100 | 4" | 64 | 4,85 | CB3442-0100 |
| 125 | 5" | 70 | 6,4 | CB3442-0125 |
| 150 | 6" | 76 | 9,1 | CB3442-0150 |
| 200 | 8" | 95 | 16,9 | CB3442-0200 |
| 250 | 10" | 108 | 27,5 | CB3442-0250 |
| 300 | 12" | 144 | 35,9 | CB3442-0300 |
| 350 | 14" | 184 | 81 | CB3442-0350 |



CB6442

Inox PN16 | Stainless steel PN16

Clapet double battant PN16 - inox

Dual plate check valve [PN16 - Stainless steel](#)

Corps et battant : Inox 316
 Axe : Inox 316
 Etanchéité : FPM
 Raccordement :
 DN50-200 : entre brides PN25
 DN250-600 : entre brides PN10/16
 Pression de service max :
 DN50 à DN300 : 16 bar
 DN350 à DN600 : 10 bar
 Température de service : -10°C/+180°C

Body and plate: Stainless steel 316
 Shaft: Stainless steel 316
 Seal: FPM
 Connection:
 DN50-200: between flanges PN25
 DN250-600: between flanges PN 10/16
 Working pressure:
 DN50-300: 16 bar
 DN350-600: 10 bar
 Working temperature: -10°C/+180°C

| DN | | PS | L (mm) | Kg | Ref. |
|-----|--------|----|--------|-------|-------------|
| mm | inch | | | | |
| 50 | 2" | 16 | 54 | 1,84 | CB6442-0050 |
| 65 | 2" 1/2 | 16 | 54 | 2,04 | CB6442-0065 |
| 80 | 3" | 16 | 57 | 3,35 | CB6442-0080 |
| 100 | 4" | 16 | 64 | 5,05 | CB6442-0100 |
| 125 | 5" | 16 | 70 | 6,68 | CB6442-0125 |
| 150 | 6" | 16 | 76 | 9,6 | CB6442-0150 |
| 200 | 8" | 16 | 95 | 18,07 | CB6442-0200 |
| 250 | 10" | 16 | 108 | 26,9 | CB6442-0250 |
| 300 | 12" | 16 | 144 | 38,9 | CB6442-0300 |
| 350 | 14" | 10 | 184 | 80 | CB6442-0350 |
| 400 | 16" | 10 | 191 | 106 | CB6442-0400 |
| 450 | 18" | 10 | 203 | 128 | CB6442-0450 |
| 500 | 20" | 10 | 213 | 158 | CB6442-0500 |
| 600 | 24" | 10 | 222 | 225 | CB6442-0600 |

CB6450

Inox PN25 | Stainless steel PN25

Clapet double battant PN25 - inox

Dual plate swing check valve [PN25 - Stainless steel](#)

Corps et battant : Inox 316
 Axe : Inox 316
 Etanchéité : FPM
 Raccordement : Entre-Brides PN25
 Pression de service : 25 bar
 Température de service max : +200°C

Body and plate: Stainless steel 316
 Shaft: Stainless steel 316
 Seal: FPM
 Connection: Between flanges PN25
 Working pressure: 25 bar
 Maximum working temperature: +200°C

* sur demande / on request

| DN | | L (mm) | Kg | Ref. |
|-----|--------|--------|-----|-------------|
| mm | inch | | | |
| 50 | 2" | 43 | 1,2 | CB6450-0050 |
| 65 | 2" 1/2 | 46 | 1,9 | CB6450-0065 |
| 80 | 3" | 64 | 3 | CB6450-0080 |
| 100 | 4" | 64 | 4 | CB6450-0100 |
| 125 | 5" | 70 | 6 | CB6450-0125 |
| 150 | 6" | 76 | 8,5 | CB6450-0150 |
| 200 | 8" | 89 | 15 | CB6450-0200 |
| 250 | 10" | 114 | * | CB6450-0250 |
| 300 | 12" | 114 | * | CB6450-0300 |
| 350 | 14" | 127 | 56 | CB6450-0350 |
| 400 | 16" | 140 | 73 | CB6450-0400 |
| 450 | 18" | 152 | 98 | CB6450-0450 |
| 500 | 20" | 152 | 127 | CB6450-0400 |
| 600 | 24" | 178 | 193 | CB6450-0600 |



CLAPETS À SOUPE LIFT CHECK VALVES

CS2142 | CS2143

Clapet de retenue à soupape à chapeau union femelle BSP

Femelle BSP union cap lift check valve



Corps : Bronze
Clapet : Inox ASTM A182 F316L
Ressort : Inox 303
Étanchéité :
CS2142 Inox
CS2143 PTFE
Raccordement : Femelle BSP
Pression de service max : 25 bar
Température de service max :
-10°C/+180°C

Body: Bronze
Disc: Stainless steel ASTM A182 F316L
Spring: Stainless steel 303
Seal:
CS2142 Stainless steel
CS2143 PTFE
Connection: Female BSP
Maximum working pressure: 25 bar
Maximum working temperature:
-10°C/+180°C



Montage toutes positions grâce au ressort.
Mountable in all positions thanks to the spring.

| DN | | L (mm) | Kg | Ref. |
|----|-------|--------|-------|----------------------------|
| mm | inch | | | |
| 8 | 1/4" | 46 | 0,197 | CS2142-0008 CS2143-0008 |
| 10 | 3/8" | 46 | 0,202 | CS2142-0010 CS2143-0010 |
| 15 | 1/2" | 56 | 0,281 | CS2142-0015 CS2143-0015 |
| 20 | 3/4" | 62 | 0,504 | CS2142-0020 CS2143-0020 |
| 25 | 1" | 74 | 0,727 | CS2142-0025 CS2143-0025 |
| 32 | 1"1/4 | 91 | 1,164 | CS2142-0032 CS2143-0032 |
| 40 | 1"1/2 | 100 | 1,504 | CS2142-0040 CS2143-0040 |
| 50 | 2" | 128 | 2,508 | CS2142-0050 CS2143-0050 |

CS3240

Clapet à soupape à brides PN16

Flanged type lift check valve PN16



Corps : Fonte GG25
Obturbateur : Fonte GG25
Ressort : Inox 304
Étanchéité : Inox
Raccordement : A brides PN16
Pression de service : 16 bar
Température de service max :
+120°C (16 bar)/+225°C (12 bar)

Body: Cast Iron GG25
Disc: Cast iron GG25
Spring: Stainless steel 304
Seal: Stainless steel
Connection: Flanged PN16
Maximum working pressure: 16 bar
Maximum working temperature:
+120°C (16 bar)/+225°C (12 bar)



Montage toutes positions grâce au ressort
Mountable in all positions thanks to the spring

| DN | | L (mm) | Kg | Ref. |
|-----|--------|--------|-----|-------------|
| mm | inch | | | |
| 15 | 1/2" | 130 | 2,2 | CS3240-0015 |
| 20 | 3/4" | 150 | 3,3 | CS3240-0020 |
| 25 | 1" | 160 | 3,8 | CS3240-0025 |
| 32 | 1"1/4 | 180 | 5,5 | CS3240-0032 |
| 40 | 1"1/4 | 200 | 6,9 | CS3240-0040 |
| 50 | 2" | 230 | 8,7 | CS3240-0050 |
| 65 | 2" 1/2 | 290 | 15 | CS3240-0065 |
| 80 | 3" | 310 | 20 | CS3240-0080 |
| 100 | 4" | 350 | 25 | CS3240-0100 |
| 125 | 5" | 400 | 40 | CS3240-0125 |
| 150 | 6" | 480 | 55 | CS3240-0150 |
| 200 | 8" | 600 | 88 | CS3240-0200 |
| 250 | 10" | 730 | 196 | CS3240-0250 |
| 300 | 12" | 850 | 300 | CS3240-0300 |

CS5261S1

Clapet à soupape à brides PN40

Flanged type lift check valve PN40



Corps : Acier GP240GH
Chapeau : Acier GP240GH
Obturbateur : Inox 304
Joint : Graphite
Raccordement : A brides PN40
Pression de service max : 40 bar
Température de service max : 180°C

Body: Steel GP240GH
Bonnet: Steel GP240GH
Disc: Stainless steel 304
Gasket: Graphite
Connection: Flanged PN40
Maximum working pressure: 40 bar
Maximum working temperature: 180°C

NEW



Montage toutes positions grâce au ressort
Mountable in all positions thanks to the spring

| DN | | L (mm) | Kg | Ref. |
|-----|--------|--------|-----|---------------|
| mm | inch | | | |
| 25 | 1" | 160 | 4,5 | CS5261S1-0025 |
| 32 | 1"1/4 | 180 | 5,5 | CS5261S1-0032 |
| 40 | 1"1/4 | 200 | 9 | CS5261S1-0040 |
| 50 | 2" | 230 | 11 | CS5261S1-0050 |
| 65 | 2" 1/2 | 290 | 15 | CS5261S1-0065 |
| 80 | 3" | 310 | 24 | CS5261S1-0080 |
| 100 | 4" | 350 | 32 | CS5261S1-0100 |
| 125 | 5" | 400 | 48 | CS5261S1-0125 |
| 150 | 6" | 480 | 65 | CS5261S1-0150 |





CLAPETS D'EXTREMITÉ
TERMINAL CHECK VALVES



Empêche le retour des eaux dans la conduite.
Prevents water backflow in the pipe.

CBT6206 | CBT6209A

Clapet d'extrémité acier inoxydable
Stainless steel terminal check valve



Corps : Acier inoxydable 304
Battant : Acier inoxydable 304
Étanchéité : EPDM
Raccordement :
DN200-500 : à brides PN10
DN600-2000 : à brides PN2,5
Pression de service max : 0,5 bar
Température de service max : 120°C

Body: Stainless steel 304
Disc: Stainless steel 304
Seal: EPDM
Connection:
DN200-500: flanged PN10
DN600-2000: flanged PN2,5
Maximum working pressure: 0,5 bar
Maximum working temperature: 120°C



Étanchéité optimale
Optimal sealing

| DN | | | L (mm) | Acier inoxydable 304 Stainless steel 304 | Acier inoxydable 316 Stainless steel 316 |
|------|------|------|--------|---|---|
| mm | inch | Ref. | | Ref. | |
| 200 | 8" | 340 | | CBT6206-0200 | CBT6209A-0200 |
| 300 | 12" | 440 | | CBT6206-0300 | CBT6209A-0300 |
| 400 | 16" | 540 | | CBT6206-0400 | CBT6209A-0400 |
| 500 | 20" | 640 | | CBT6206-0500 | CBT6209A-0500 |
| 600 | 24" | 740 | | CBT6206-0600 | CBT6209A-0600 |
| 700 | 28" | 840 | | CBT6206-0700 | CBT6209A-0700 |
| 800 | 32" | 940 | | CBT6206-0800 | CBT6209A-0800 |
| 900 | 36" | 1040 | | CBT6206-0900 | CBT6209A-0900 |
| 1000 | 40" | 1140 | | CBT6206-1000 | CBT6209A-1000 |
| 1100 | 44" | * | | CBT6206-1100 | CBT6209A-1100 |
| 1200 | 48" | * | | CBT6206-1200 | CBT6209A-1200 |
| 1300 | 50" | * | | CBT6206-1300 | CBT6209A-1300 |
| 1400 | 56" | * | | CBT6206-1400 | CBT6209A-1400 |
| 1500 | 60" | * | | CBT6206-1500 | CBT6209A-1500 |
| 1600 | 64" | * | | CBT6206-1600 | CBT6209A-1600 |
| 1700 | 66" | * | | CBT6206-1700 | CBT6209A-1700 |
| 1800 | 72" | * | | CBT6206-1800 | CBT6209A-1800 |
| 2000 | 80" | * | | CBT6206-2000 | CBT6209A-2000 |

* sur demande / on request

CBT9200

Clapet d'extrémité polyamide
Terminal check valve polyamide



Corps + battant : Polyamide renforcé à 20% de fibres de verre recyclable
Ancrages mécaniques : Inox AISI 316
Joints (battants + corps) : EPDM
Raccordement : Brides ISO PN10
Tenue à la pression : 1 bar (10 mCE)
Température de service max : 70°C
Se fixe:

- sur toute paroi béton verticale à l'aide de 4 ancrages mécaniques fournis.
- sur bride de canalisation PN10 (visserie non fournie).

Body + disc: 20% Glass fiber reinforced polyamide recyclable
Shaft: Stainless Steel AISI 316
Seals: EPDM
Connection: Flanged ISO PN10
Maximum working pressure: 1 bar (10 mCE)
Maximum working temperature: 70°C
Setting:
- mounts on all types of vertical concrete walls with the 4 included mechanical anchors.
- mounts on pipe flanges PN10 (screws not included).



Étanchéité optimale grâce à son joint mousse (contre la paroi) et son joint à lèvres.
Optimal sealing thanks to its foam gasket (against the wall) and its seal.

| DN | | L (mm) | Kg | Ref. |
|-----|------|--------|-----|--------------|
| mm | inch | | | |
| 100 | 4" | 45 | 0,4 | CBT9200-0100 |
| 150 | 6" | 55 | 0,6 | CBT9200-0150 |
| 200 | 8" | 65 | 0,9 | CBT9200-0200 |

CBT9200A

Clapet d'extrémité polyester
Terminal check valve polyester



Corps + battant : Résine polyester renforcée de fibre de verre
Ancrages mécaniques : Inox AISI 316
Joints : EPDM
Raccordement : Brides ISO PN10 (à percer)
Pression max de service : 1 bar
Tenue à la pression : 1 bar (10 mCE)
Température de service max : 70°C
Se fixe:
- sur toute paroi verticale (chevilles à frapper Inox 316 fournis).
- sur bride normalisée (visserie non fournie, perçage en option surcôté).

Body + disc: Reinforced polyester resin with glassfiber
Shaft: Stainless steel AISI 316
Seals: EPDM
Connection: Flanged ISO PN10 (to drill)
Maximum service pressure: 1 bar
Pressure resistance: 1 bar (10 mCE)
Maximum working temperature: 70°C
- on vertical concrete walls (screws 316 included).
- on standardized flange (screws not included, extra cost for drilling).

| DN | | L (mm) | Kg | Ref. |
|-------|------|--------|------|---------------|
| mm | inch | | | |
| 200 | 4" | 150 | 1,6 | CBT9200A-0200 |
| 250 | 10" | 160 | 2 | CBT9200A-0250 |
| 300 | 12" | 189 | 3,7 | CBT9200A-0300 |
| 400 | 16" | 206 | 6,5 | CBT9200A-0400 |
| 500 | 20" | 240 | 9,7 | CBT9200A-0500 |
| 600 | 24" | 280 | 14,3 | CBT9200A-0600 |
| 800 | 32" | 525 | 25 | CBT9200A-0800 |
| 1000 | 40" | 535 | 102 | CBT9200A-1000 |
| 1200* | 48" | 695 | 151 | CBT9200A-1200 |
| 1400* | 56" | 800 | 236 | CBT9200A-1400 |
| 1500* | 60" | 870 | 285 | CBT9200A-1500 |

* Le perçage pour fixation sur bride ISO PN10 n'est pas réalisable pour les DN1200 / 1400 / 1500.

Drilling for mounting on ISO PN10 flange is not possible for DN1200/1400/1500.



Protection contre les refoulements.
Léger et résistant (corrosion, UV, eau de mer ...).
Prevents water backflow.
Lightweight and resistant (to corrosion, UV, seawater, etc.).



CLAPETS À PAPILLON TILTING CHECK VALVES

CP4243 | CP4243A

Clapet à papillon à brides à contrepoids
Tilting type check valve with counterweight



Corps : Fonte ductile EN-GJS-500-7 (GGG50)
Obturateur : Fonte ductile EN-GJS-500-7 (GGG50)
Siège : Inox 304
Etanchéité : EPDM
Raccordement : À brides PN10/16
Pression de service : 16 bar
Température de service : -10°C / +80°C

Body: Ductile iron EN-GJS-500-7 (GGG50)
Disc: Ductile iron EN-GJS-500-7 (GGG50)
Seat: Stainless Steel 304
Seal: EPDM
Connection: Flanged PN10/16
Working pressure: 16 bar
Working temperature: -10°C / +80°C



PN25-40 sur demande
PN25-40 on request



Inversion possible du contre-poids
Possible to reverse of the counterweight

| | | | | Clapet et contrepoids Valve with counterweight | Avec capot protection With protection guard* |
|------|------|--------|------|---|---|
| DN | | L (mm) | Kg | Ref. | Ref. |
| mm | inch | | | | |
| 200 | 8" | 230 | 45 | CP4243-0200 | CP4243A-0200 |
| 250 | 10" | 250 | 76 | CP4243-0250 | CP4243A-0250 |
| 300 | 12" | 270 | 102 | CP4243-0300 | CP4243A-0300 |
| 350 | 14" | 290 | 140 | CP4243-0350 | CP4243A-0350 |
| 400 | 16" | 310 | 176 | CP4243-0400 | CP4243A-0400 |
| 450 | 18" | 330 | 245 | CP4243-0450 | CP4243A-0450 |
| 500 | 20" | 350 | 300 | CP4243-0500 | CP4243A-0500 |
| 600 | 24" | 390 | 432 | CP4243-0600 | CP4243A-0600 |
| 700 | 28" | 430 | 565 | CP4243-0700 | CP4243A-0700 |
| 800 | 32" | 470 | 833 | CP4243-0800 | CP4243A-0800 |
| 900 | 36" | 510 | 1081 | CP4243-0900 | CP4243A-0900 |
| 1000 | 40" | 550 | 1268 | CP4243-1000 | CP4243A-1000 |
| 1200 | 48" | 630 | 2127 | CP4243-1200 | CP4243A-1200 |

NEW

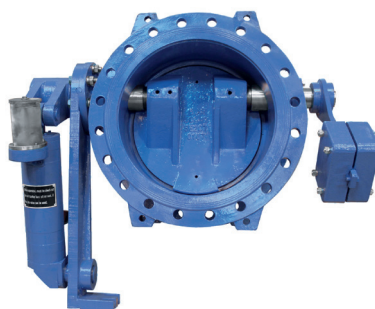
***CP4243A**

Prix de la vanne complète avec capot de protection Inox 304 inclus pour plus de sécurité.
Price of valve complete with stainless steel 304 protective cover for better safety.



CP4208 | CP4248

Clapet à papillon à brides à contrepoids avec amortisseur hydraulique
Tilting type check valve with counterweight and hydraulic damper



Corps et papillon : Fonte ductile GGG50
Siège : Acier inoxydable 304
Axe de manoeuvre : Acier inoxydable 420
Joint : EPDM
Raccordement : À brides PN10 ou PN16
Température de service : -10°C / +80°C
Avec levier, contrepoids et vérin hydraulique

Body and Disc: Ductile iron GGG50
Seat: Stainless steel 304
Shaft: Stainless steel 320
Sealing ring: EPDM
Connection: Flanged PN10 or PN16
Working temperature: -10°C / +80°C
With lever, counterweight and hydraulic damper

NEW

| | | | | PN10 | PN16 |
|------|------|--------|------|-------------|-------------|
| DN | | L (mm) | Kg | Ref. | Ref. |
| mm | inch | | | | |
| 350 | 14" | 290 | 225 | CP4208-0350 | CP4248-0350 |
| 400 | 16" | 310 | 270 | CP4208-0400 | CP4248-0400 |
| 450 | 18" | 330 | 324 | CP4208-0450 | CP4248-0450 |
| 500 | 20" | 350 | 385 | CP4208-0500 | CP4248-0500 |
| 600 | 24" | 390 | 513 | CP4208-0600 | CP4248-0600 |
| 700 | 28" | 430 | 678 | CP4208-0700 | CP4248-0700 |
| 800 | 32" | 470 | 891 | CP4208-0800 | CP4248-0800 |
| 900 | 36" | 510 | 1243 | CP4208-0900 | CP4248-0900 |
| 1000 | 40" | 550 | 1586 | CP4208-1000 | CP4248-1000 |
| 1200 | 48" | 630 | 2623 | CP4208-1200 | CP4248-1200 |



Avec levier contrepoids et vérin hydraulique - amortissement sur la fermeture.
With lever, counterweight and hydraulic damper - damping during closure.



Prévoir de rajouter de l'huile hydraulique pour le vérin (type YB-N46 ou similaire).
Add Hydraulic oil (type YB-N46 or equivalent).



Contactez-nous pour toute demande de position verticale; nous préciser la position du clapet lors de votre demande (position livrée en horizontal en standard) ainsi que l'environnement amont/aval du clapet pour vous préconiser l'équipement le plus adapté.

Contact us for any vertical position requests: please specify the position of the check valve (position delivered horizontally as standard) as well as the upstream / downstream environment of the check valve to recommend the most suitable equipment.





**DISCONNECTEURS
BACKFLOW PREVENTERS**



Le disconnecteur prévient tout dysfonctionnement du réseau et garantit une excellente qualité de l'eau. En cas de changement de pression, il permet un arrêt automatique de la distribution d'eau.

The backflow preventer warns of any dysfunction in the network and guarantees excellent water quality. In case of a reversal in pressure, it automatically stops the distribution of water. The polluted fluid is isolated then disposed into the network of water to discharge.

X2101

Disconnecteur femelle BSP - à zone de pression différente non contrôlable (type CA 573)

Female BSP backflow preventer - non-controllable different pressure area - CA 573 type



Corps et siège : Laiton
Obturbateur : POM
Joint et membrane : NBR
Raccordement : Femelle BSP
Pression de service max : 10 bar
Température de service : +5°C/+65 °C

Body & Seat: Brass
Disc: POM
Gasket & membrane: NBR
Connection: Female BSP
Maximum working pressure: 10 bar
Working temperature: +5°C/+65 °C

| DN | | L (mm) | Kg | Ref. |
|----|------|--------|------|------------|
| mm | inch | | | |
| 15 | 1/2" | 121 | 0,59 | X2101-0015 |
| 20 | 3/4" | 151 | 0,66 | X2101-0020 |



X2102

Disconnecteur type "BA" mâle BSP - à zone de pression réduite contrôlable (type BA 574)

Male BSP backflow preventer "BA" type - controllable reduced pressure area - BA 574 type



Corps et chapeau :
Laiton du 1/2" au 1"1/4"
Bronze du 1"1/2" au 2"
Obturbateurs : Laiton
Axe : Inox
Membrane : EPDM
Joints : NBR
Raccordement : Mâle BSP
Pression de service max : 10 bar
Température de service : +5°C / +65 °C

Body & bonnet :
Brass from 1/2" up to 1"1/4"
Bronze from 1"1/2" up to 2"
Disc: Brass
Stem: Stainless steel
Membrane: EPDM
Gaskets: NBR
Connection: Male BSP
Maximum working pressure: 10 bar
Working temperature: +5°C/+65 °C

| DN | | L (mm) | Kg | Ref. |
|----|--------|--------|------|------------|
| mm | inch | | | |
| 15 | 1/2" | 173 | 1,06 | X2102-0015 |
| 20 | 3/4" | 200 | 1,8 | X2102-0020 |
| 25 | 1" | 262 | 3,7 | X2102-0025 |
| 32 | 1"1/4" | 277 | 5 | X2102-0032 |
| 40 | 1"1/2" | 330 | 7 | X2102-0040 |
| 50 | 2" | 396 | 9,8 | X2102-0050 |



X2203

Disconnecteur à brides - à zone de pression réduite contrôlable (type BA 575)

Flanged backflow preventer - controllable reduced pressure area - BA575 type



Corps et chapeau : Bronze
Obturbateurs : Laiton
Ressort : Inox
Membrane : EPDM
Joints : NBR
Raccordement : À brides PN10
Pression de service max : 10 bar
Température de service : +5°C/+65 °C

Body & bonnet: Bronze
Disc: Brass
Spring: Stainless steel
Membrane: EPDM
Gaskets: NBR
Connection: Flanged PN10
Maximum working pressure: 10 bar
Working temperature: +5°C/+65 °C

| DN | | L (mm) | Kg | Ref. |
|-----|--------|--------|------|------------|
| mm | inch | | | |
| 65 | 2"1/2" | 305 | 17 | X2203-0065 |
| 80 | 3" | 470 | 26,5 | X2203-0080 |
| 100 | 4" | 470 | 28 | X2203-0100 |



CLAPETS CHECK VALVES

GÉNÉRALITÉS

Respecter le sens de montage des clapets. (Voir Fig. 36)
Respecter les correspondances de DN entre le clapet et la tuyauterie. Respecter les distances minimales d'implantation. (Voir Fig. 37)
Respecter les cycles d'utilisations, éviter les régimes pulsatoires et les utilisations anormales du clapet. (Voir Fig. 37)

LIMITES D'UTILISATION

L'utilisateur doit s'assurer de l'utilisation du matériel dans les bonnes conditions de service (Pression, température et nature du fluide) préconisées sur la documentation TECOFI et les plaques de marquage. Les températures d'utilisation des clapets, vis-à-vis du fluide, dépendent du matériau des joints de siège ou de la boule.
Se conformer au marquage de la plaque signalétique CE, qui définit les températures minimums et maximales de service (TS).

CLAPETS À BOULE

Pour DN > 250 : montage hors axe avec décalage possible afin de diminuer les coups de bélier lors de la descente de la boule. (Voir Fig. 35)
Dans le cas d'un montage horizontal, attention à l'utilisation sous faible charge (fermeture de la boule).
Étanchéité relative sur eau claire.
Sur les clapets à boule, le bouchon de dégazage permet de décoller manuellement la boule, en régime de fonctionnement.
Montage sur fluide descendant interdit. (Voir Fig. 36)

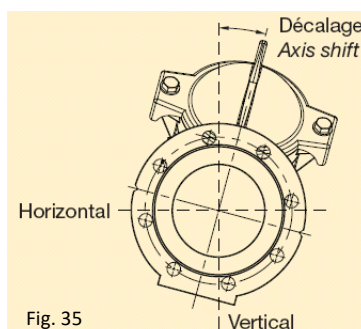


Fig. 35

- A partir du DN 300 l'inclinaison du clapet par rapport à la verticale permet de diminuer le risque de coup de bélier grâce à une descente plus lente de la boule.

- From DN300 the check valve inclination to the vertical allows decreasing the risk of water hammer thanks to a slower descent of the ball.

CLAPETS SIMPLE BATTANT

Monter le clapet en utilisant le crochet pour la préhension. Lors d'un montage horizontal, l'axe du crochet matérialise l'axe vertical de la tuyauterie. (Voir Fig. 36)

CLAPETS DOUBLE BATTANT

S'assurer du bon fonctionnement des ressorts de rappel.
DN > 150 : montage sur fluide descendant fortement déconseillé. (Voir Fig. 36)
Lors d'un montage horizontal, l'axe du clapet doit être vertical. (Voir Fig. 36)

GENERALITIES

Respect the assembly direction. (See Fig. 35)
Respect the correlation between the DN of the check valve and piping.
Respect the minimum distances of installation. (See Fig. 37)
Respect the cycles of uses. Avoid the pulsed operations and the abnormal uses of the check valve. (See Fig. 37)

TERMS OF USE

The user must follow the working conditions of the equipment (Pressure, temperature and nature of fluid) recommended on TECOFI documentation and the valve marking. The temperatures of use of the check valves, the fluid, depending on the material of the seat and the ball.
Conform to the marking of the CE nameplate, which defines the minimum and maximum temperatures of service (TS).

BALL CHECK VALVES

For DN > 250: possible assembly with axis shift in order to decrease the water hammers when ball descends. (See Fig. 35)
In the case of horizontal assembly, be careful on using under low pressure (closing of ball). Relative tightness for clear water.
On ball check valves, the vent plug makes it possible to remove manually the ball during operation.
Assembly is not possible with a downward flow. (See Fig. 36)

SANDWICH CHECK VALVE

Mount the valve using the hook.
In the case of horizontal assembly, the hook should be vertical to the piping. (See Fig. 36)

DUAL PLATE CHECK VALVE

Insure the correct operation of the return springs.
DN > 150: assembly is not possible with downward flows. (See Fig. 36)
When assembling horizontally, the axis of the check valve must be vertical. (See Fig. 36)



POSITION DES CLAPETS ET SENS DE MONTAGE

Veillez à un montage conforme au sens de la flèche.

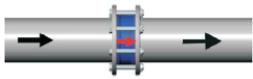
VALVE POSITION AND ASSEMBLY

Please assemble the valve following the arrow.

Clapet à double battant / Dual plate check valve

Horizontal

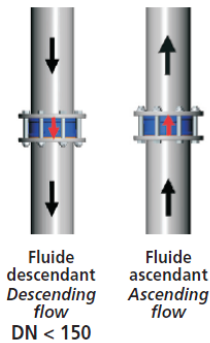
Pour un montage horizontal, l'axe du clapet doit être vertical.
For horizontal assembly, the axis should be placed in the vertical position.



Vertical

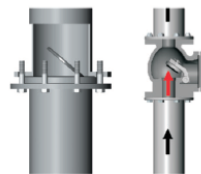
Pour un montage vertical, le sens d'ouverture des battants du clapet doit correspondre à la direction du fluide.

When assembling in the vertical position, the opening direction of the plates has to be in accordance to the direction of the fluid.

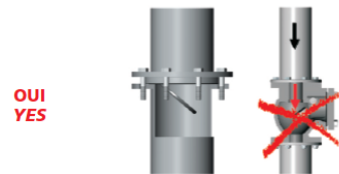


Clapet à battant / swing check valve

Vertical



Fluide ascendant
Ascending flow



Fluide descendant
Descending flow



Horizontal

Pour un montage horizontal, l'axe du clapet (matérialisé par le crochet) doit être à la verticale.

For assembly in the horizontal position, ensure the axis is placed in the vertical position (ensured when hook is positioned vertically).

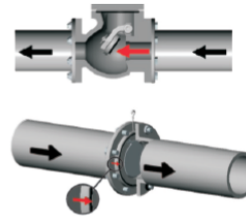
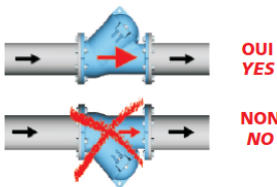


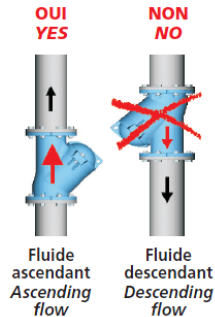
FIG. 36

Clapet à boule / ball check valve

Horizontal

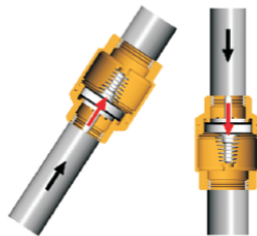
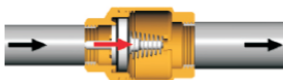


Vertical



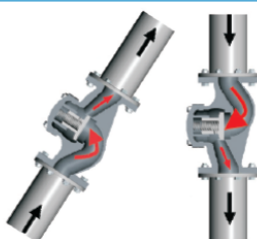
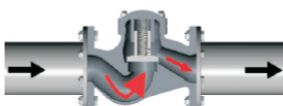
Clapet axial / Axial check valve

Montage toutes positions ; fluide ascendant ou descendant.
Mounting in all positions; ascending flow or descending flow.



Clapet à soupape / lift check valve

Montage toutes positions ; fluide ascendant ou descendant.
Mounting in all positions; ascending flow or descending flow.



ATTENTION AUX DISTANCES !

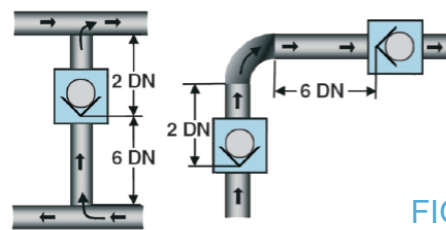
Une distance minimale doit être respectée entre le clapet et tout élément perturbateur : coude, divergent ou appareil de robinetterie.

Distance minimale :
- en amont du clapet : 6DN ;
- en aval du clapet : 2DN.

ATTENTION TO DISTANCES !

A minimum distance must be respected between the check valve and any disruptive element : elbow, reducer or any valve.

Minimum distance :
- upstream : 6DN ;
- downstream : 2DN.



DN : Diamètre Nominal / Nominal Diameter

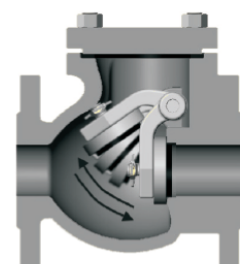
FIG. 37

RESPECTER LE CYCLE D'UTILISATION

Eviter les régimes pulsatoires et les utilisations anormales du clapet.

RESPECT CYCLES OF USES

Avoid the pulsed operations and abnormal uses of check valve.





NOTICE D'INSTALLATION ET D'UTILISATION USE AND INSTALLATION NOTE



CLAPET/FILTRE
CHECK VALVE/ STRAINER

TABLES DES MATÉRIAUX / MATERIAL CHART

| | Clapets axiaux Axial check valves | | | Clapets à battant Swing check valves | | Clapets à soupape Lift check valves | | Clapets à boule Ball check valves | | Clapets à papillon Tilting check valves | | Filtres Strainers | |
|---|--------------------------------------|--------------------|-------------------------|---|-------------------------|--|-------------------------|--------------------------------------|---------------|--|-------------------------|--------------------------------------|-----------------|
| | Corps Body | Obturateur Disc | Etanchéité Tightness | Corps et battant Body & disc | Etanchéité Tightness | Corps et chapeau Body & bonnet | Etanchéité Tightness | Corps et chapeau Body & cover | Boule Ball | Corps et battant Body & disc | Etanchéité Tightness | Corps et chapeau Body & bonnet | Tamis Screen |
| Fonte / Cast iron EN-GJL-250 | ✓ | ✓ | ✓ | ✓ | | ✓ | | | | | | ✓ | |
| Fonte GS / Ductile iron EN-GJS-400-15 | ✓ | ✓ | | ✓ | | | | ✓ | | ✓ | | ✓ | |
| Inox / Stainless steel (316) | ✓ | ✓ | ✓ | ✓ | ✓ | | ✓ | ✓ | | | | ✓ | ✓ |
| Inox / Stainless steel (304) | | | | | ✓ | | | | | | | | ✓ |
| Inox X20Cr13 (inox 420) | | ✓ | ✓ | | | | ✓ | | | | | | |
| Acier / Cast steel | | | | ✓ | | ✓ | | | | | | ✓ | |
| Bronze | | | | ✓ | ✓ | ✓ | | | | | | ✓ | |
| Laiton / Brass | ✓ | | | ✓ | ✓ | | | | | | | ✓ | |
| PTFE | | | ✓ | | ✓ | | ✓ | | | | | | |
| Nitrile | | | ✓ | | ✓ | | | | ✓ | | | | |
| EPDM | | | ✓ | | ✓ | | | | ✓ | | ✓ | | |
| FPM (type Viton) | | | | | ✓ | | | | | | | | |

✓ Disponible en standard / Standard construction

Raccordement / Connection

| | | | | | | | | | | | |
|----------------------------------|---|--|---|--|---|--|---|--|---|--|---|
| ISO PN 10 | ✓ | | ✓ | | ✓ | | ✓ | | ✓ | | ✓ |
| ISO PN 16 | ✓ | | ✓ | | ✓ | | ✓ | | ✓ | | ✓ |
| ISO PN 20 ASA 150 | ✓ | | ✓ | | ✓ | | | | | | ✓ |
| ISO PN 40 | ✓ | | ✓ | | ✓ | | | | ✓ | | ✓ |
| Taraudé gaz / Threaded BSP | ✓ | | ✓ | | ✓ | | ✓ | | | | ✓ |

✓ Disponible en standard / Standard construction

Nature du fluide / Fluid type

| | | | | | | | | | | | |
|------------------------------------|-------|--|-------|--|-------|--|-------|--|-------|--|-------|
| Eau claire / Clear water | ★ ★ ★ | | ★ ★ ★ | | ★ ★ | | ★ ★ | | ★ ★ ★ | | ★ ★ ★ |
| Eau chargée / Waste water | | | ★ | | | | ★ ★ ★ | | ★ | | ★ ★ |
| Gaz / Gas | ★ ★ | | ★ ★ | | ★ ★ ★ | | | | | | ★ ★ ★ |
| Vapeur / Steam | ★ ★ ★ | | | | ★ ★ ★ | | | | | | ★ ★ ★ |
| Fluide agressif Corrosive fluid | ★ ★ ★ | | ★ ★ ★ | | ★ ★ ★ | | ★ ★ | | | | ★ ★ ★ |

★★★ Préconisé / Designed for

★★ Acceptable / Acceptable

★ Nous consulter / On request

Position de montage / Assembly position

| | | | | | | | | | | | |
|----------------------------|-------|--|-------|--|-------|--|-------|--|-------|--|-------|
| Descendant Descending ↓ | ★ | | ★ | | ★ ★ ★ | | | | ★ | | ★ ★ ★ |
| Ascendant Ascending ↑ | ★ ★ ★ | | ★ ★ ★ | | ★ ★ ★ | | ★ ★ ★ | | ★ ★ ★ | | ★ |
| Horizontal ↔ | ★ ★ ★ | | ★ ★ ★ | | ★ ★ ★ | | ★ ★ ★ | | ★ ★ ★ | | ★ ★ ★ |

★★★ Préconisé / Designed for

★★ Acceptable / Acceptable

★ Nous consulter / On request

FOCUS : FILTRE À AIMANT

MAGNET STRAINER FOCUS

AIMANTS POUR FIXATION DES PARTICULES

Magnets to attract PARTICLES

CORPS EN FONTE
REVÊTU EPOXY 150µm
CAST IRON BODY EPOXY
COATED 150µm

TAMIS INOX 304 PERFORÉ

Maille 1 - 1,6mm
STAINLESS STEEL 304 PERFORATED
SCREEN - Mesh 1 - 1,16mm

BOUCHON DE VIDANGE
DRAIN PLUG

VISSERIE INOX
STAINLESS STEEL SCREWS

Voir page 188
See page 188

AVANTAGES

Recueille toutes les impuretés qui se trouvent dans l'installation. Élimine les particules métalliques trop fines pour être filtrées mais qui risquent de détériorer les appareils en aval du filtre.

Cela évite également la contamination du process.

Filtre les particules suivantes : fer, acier.

Installations en amont des chaudières recommandées.

ADVANTAGES

Collects all impurities in the installation. Eliminates metal particles that are too thin to be filtered, but can damage the equipment installed after the strainer.

This also prevents contamination of the process.

Filters the following particles: Iron, Steel.

Installations upstream of boilers recommended.

ENTRETIEN

Lors du nettoyage du tamis dévisser l'aimant du couvercle pour enlever les particules métalliques accrochées.

MAINTENANCE

When cleaning the screen unscrew the magnet from the filter cover to remove the collected metal particles.



FILTRES À TAMIS FONTE
CAST IRON STRAINERS

F3240S1-EP

Filtere à tamis Y fonte à brides - PN16

Y strainer cast iron flanged - PN16



Corps :

DN15-300 : Fonte EN-GJL-250 (GG25)
DN350-400 : Fonte ductile EN-GJS-500 (GGG50)

Tamis : Inox 304

DN15-50 : Maille 1 mm
DN65-150 : Maille 1,3 mm
DN200-400 : Maille 1,6 mm

Bouchon de purge : Inox 304

Boulonnerie : Inox 304

Joint : EPDM CH

Raccordement :

DN15-150 : À brides PN10/PN16

DN200-400 : À brides PN16

Pression de service : 16 bar

Température de service max :

-15°C / + 140°C

Body:

DN15-300: Cast iron EN-GJL-250 (GG25)
DN350-400: Fonte ductile EN-GJS-500 (GGG50)

Screen: Stainless steel 304

DN15-50: Mesh 1 mm

DN65-150: Mesh 1,3 mm

DN200-400: Mesh 1,6 mm

Drain plug: Stainless steel 304

Bolts: Stainless steel 304

Gasket: Heat EPDM

Connection:

DN15-150: Flanged PN10/PN16

DN200-400: Flanged PN16

Working pressure: 16 bar

Maximum working temperature:

-15°C / + 140°C

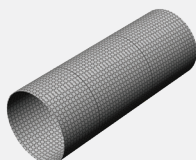
| DN | | L (mm) | Kg | Ref. |
|-----|-------|--------|-----|----------------|
| mm | inch | | | |
| 15 | 1/2" | 130 | 3 | F3240S1-EP0015 |
| 20 | 3/4" | 150 | 3,2 | F3240S1-EP0020 |
| 25 | 1" | 160 | 4 | F3240S1-EP0025 |
| 32 | 1"1/4 | 180 | 6 | F3240S1-EP0032 |
| 40 | 1"1/2 | 200 | 7 | F3240S1-EP0040 |
| 50 | 2" | 230 | 8 | F3240S1-EP0050 |
| 65 | 2"1/2 | 290 | 12 | F3240S1-EP0065 |
| 80 | 3" | 310 | 14 | F3240S1-EP0080 |
| 100 | 4" | 350 | 18 | F3240S1-EP0100 |
| 125 | 5" | 400 | 28 | F3240S1-EP0125 |
| 150 | 6" | 480 | 40 | F3240S1-EP0150 |
| 200 | 8" | 600 | 70 | F3240S1-EP0200 |
| 250 | 10" | 730 | 130 | F3240S1-EP0250 |
| 300 | 12" | 850 | 170 | F3240S1-EP0300 |
| 350 | 14" | 980 | 240 | F3240S1-EP0350 |
| 400 | 16" | 1100 | 345 | F3240S1-EP0400 |

PRODUITS ASSOCIÉS | RELATED PRODUCTS

F3240TAMISN-IN

Tamis pour filtre F3240S1

Screen for F3240S1 strainer



Tamis : Inox 304

DN15-50 : Maille 1 mm

DN65-150 : Maille 1,3 mm

DN200-400 : Maille 1,6 mm

Screen: Stainless steel 304

DN15-50: Mesh 1 mm

DN65-150: Mesh 1.3 mm

DN200-400: Mesh 1.6 mm

| DN | | Ref. |
|-----|-------|----------------------|
| mm | inch | |
| 15 | 1/2" | F3240TAMISN-IN0015 |
| 20 | 3/4" | F3240TAMISN-IN0020 |
| 25 | 1" | F3240TAMISN-IN0025 |
| 32 | 1"1/4 | F3240TAMISN-IN0032 |
| 40 | 1"1/2 | F3240TAMISN-IN0040 |
| 50 | 2" | F3240TAMISN-IN0050 |
| 65 | 2"1/2 | F3240TAMISN-IN0065 |
| 80 | 3" | F3240TAMISN-IN0080 |
| 100 | 4" | F3240TAMISN-IN0100 |
| 125 | 5" | F3240TAMISN-IN0125 |
| 150 | 6" | F3240TAMISN-IN0150 |
| 200 | 8" | F3240TAMISN-IN0200 |
| 250 | 10" | F3240TAMISN-IN0250V2 |
| 300 | 12" | F3240TAMISN-IN0300V2 |
| 350 | 14" | F3240TAMISN-IN0350 |
| 400 | 16" | F3240TAMISN-IN0400 |

F3240JOINTN-EP

Joint de chapeau pour filtre F3240S1

Bonnet gasket for strainer F3240S1



Joint : EPDM CH

Gasket: Heat EPDM

| DN | | Ref. | DN | | Ref. |
|----|-------|--------------------|-----|------|--------------------|
| mm | inch | | mm | inch | |
| 15 | 1/2" | F3240JOINTN-EP0015 | 100 | 4" | F3240JOINTN-EP0100 |
| 20 | 3/4" | F3240JOINTN-EP0020 | 125 | 5" | F3240JOINTN-EP0125 |
| 25 | 1" | F3240JOINTN-EP0025 | 150 | 6" | F3240JOINTN-EP0150 |
| 32 | 1"1/4 | F3240JOINTN-EP0032 | 200 | 8" | F3240JOINTN-EP0200 |
| 40 | 1"1/2 | F3240JOINTN-EP0040 | 250 | 10" | F3240JOINTN-EP0250 |
| 50 | 2" | F3240JOINTN-EP0050 | 300 | 12" | F3240JOINTN-EP0300 |
| 65 | 2"1/2 | F3240JOINTN-EP0065 | 350 | 14" | F3240JOINTN-EP0350 |
| 80 | 3" | F3240JOINTN-EP0080 | 400 | 16" | F3240JOINTN-EP0400 |



F3242

ACS

Filtre à tamis fonte ACS - PN16

ACS cast iron strainer - PN16



Corps et chapeau : Fonte EN-GJL-250 (GG25)
Tamis : ASTM A182 F316
Tamis démontable maille :
 DN40-50 : 1mm
 DN65-80 : 1,25mm
 DN100-300 : 1,6 mm
Bouchon de vidange : 1/2" BSP du DN40 au DN125, 3/4" au delà du DN125
Etanchéité : EPDM
Raccordement : A brides PN16 / PN10 DN>200
Pression de service max : 16 bar DN40-200
 10 bar > DN200
Température de service max : +80°C

Body, bonnet : Cast iron EN-GJL-250 (GG25)
Screen : ASTM A182 F316
Screen mesh :
 DN40-50: 1mm
 DN65-80: 1.25mm
 DN100-300: 1.6 mm
Drain plug: 1/2" for DN40 up to DN125
 3/4" for over DN125
Seal: EPDM
Connection: Flanged PN16 / PN10 DN>200
Maximum Working pressure: 16 bar DN40-200
 10 bar > DN200
Maximum working temperature: +80°C

| DN | | L (mm) | Kg | Ref. |
|-----|-------|--------|-------|------------|
| mm | inch | | | |
| 40 | 1 1/2 | 200 | 6,3 | F3242-0040 |
| 50 | 2" | 230 | 7,7 | F3242-0050 |
| 65 | 2 1/2 | 290 | 11,4 | F3242-0065 |
| 80 | 3" | 310 | 14,2 | F3242-0080 |
| 100 | 4" | 350 | 18,5 | F3242-0100 |
| 125 | 5" | 400 | 28,5 | F3242-0125 |
| 150 | 6" | 480 | 39,2 | F3242-0150 |
| 200 | 8" | 600 | 61,2 | F3242-0200 |
| 250 | 10" | 730 | 115,6 | F3242-0250 |
| 300 | 12" | 850 | 155,5 | F3242-0300 |

F3230

ASA 150

Filtre à tamis «Y» fonte - ASA150

"Y" type cast iron strainer - ASA150



Corps :
 Fonte EN-GJL-250 (GG25)
Tamis : Inox 304 - Maille 1mm
Bouchon de purge : Acier A105
Joint : Graphite
Raccordement : A brides ASA 150
Pression de service : 16 bar
Température de service max :
 -10°C / + 200°C

Body:
 Cast iron EN-GJL-250 (GG25)
Screen: Stainless steel 304 - Mesh 1mm
Drain plug: Carbon steel A105
Gasket: Graphite
Connection: Flanged ASA 150
Working pressure: 16 bar
Maximum working temperature:
 -10°C / + 200°C

| DN | | L (mm) | Kg | Ref. |
|-----|-------|--------|-----|------------|
| mm | inch | | | |
| 50 | 2" | 230 | 8 | F3230-0050 |
| 65 | 2 1/2 | 290 | 12 | F3230-0065 |
| 80 | 3" | 310 | 14 | F3230-0080 |
| 100 | 4" | 350 | 18 | F3230-0100 |
| 125 | 5" | 400 | 32 | F3230-0125 |
| 150 | 6" | 480 | 45 | F3230-0150 |
| 200 | 8" | 600 | 80 | F3230-0200 |
| 250 | 10" | 730 | 130 | F3230-0250 |
| 300 | 12" | 850 | 195 | F3230-0300 |

F3240N

Haute température | High temperature

Filtre à tamis fonte - haute température - PN16

Cast iron strainer - high temperature - PN16



Corps :
 Fonte EN-GJL-250 (DN15-300)
 Fonte EN-GJS-400 (DN350-400)
Tamis : Inox 304
Maille :
 DN15-50 : 1mm
 DN65-150 : 1,3mm
 DN200-400 : 1,6mm
Bouchon de purge : Acier A105
Joint : Graphite
Raccordement :
 DN15-150 : À brides PN10/PN16
 DN200-400 : À brides PN16
Pression de service : 16 bar
Température de service : -10°C/+200°C

Body:
 Cast iron EN-GJL-250 (DN15-300)
 Ductile iron EN-GJS-400 (DN350-400)
Screen: Stainless steel 304
Mesh:
 DN15-50: 1mm
 DN65-150: 1.3mm
 DN200-400: 1.6mm
Drain plug: Steel A105
Gasket: Graphite
Connection:
 DN15-150: Flanged PN10/PN16
 DN200-400: Flanged PN16
Working pressure: 16 bar
Working temperature: -10°C/+200°C

| DN | | L (mm) | Kg | Ref. |
|-----|-------|--------|-----|-------------|
| mm | inch | | | |
| 15 | 1/2" | 130 | 3 | F3240N-0015 |
| 20 | 3/4" | 150 | 3,2 | F3240N-0020 |
| 25 | 1" | 160 | 4 | F3240N-0025 |
| 32 | 1 1/4 | 180 | 6 | F3240N-0032 |
| 40 | 1 1/2 | 200 | 7 | F3240N-0040 |
| 50 | 2" | 230 | 8 | F3240N-0050 |
| 65 | 2 1/2 | 290 | 12 | F3240N-0065 |
| 80 | 3" | 310 | 14 | F3240N-0080 |
| 100 | 4" | 350 | 18 | F3240N-0100 |
| 125 | 5" | 400 | 32 | F3240N-0125 |
| 150 | 6" | 480 | 45 | F3240N-0150 |
| 200 | 8" | 600 | 80 | F3240N-0200 |
| 250 | 10" | 730 | 130 | F3240N-0250 |
| 300 | 12" | 850 | 170 | F3240N-0300 |
| 350 | 14" | 980 | 240 | F3240N-0350 |
| 400 | 16" | 1100 | 345 | F3240N-0400 |

CHECK VALVE / STRAINER

F3240NA

Avec aimant | With magnet

Filtre à tamis fonte - PN16 - avec aimant

Cast iron strainer - PN16 - with magnet



Corps :
Fonte EN-GJL-250 (DN15-300)
Fonte EN-GJS-400 (DN350-400)
Tamis : Inox 304
Maille :
DN15-50 : 1mm
DN65-150 : 1,3mm
DN200-400 : 1,6mm
Joint : Graphite
Raccordement :
DN15-150 : À brides PN10/PN16
DN200-400 : À brides PN16
Pression de service : 16 bar
Température de service : -10°C/+200°C
Avec aimant

Body:
Cast iron EN-GJL-250 (DN15-300)
Ductile iron EN-GJS-400 (DN350-400)
Screen: Stainless steel 304
Mesh:
DN15-50: 1mm
DN65-150: 1.3mm
DN200-400: 1.6mm
Gasket: Graphite
Connection:
DN15-150: Flanged PN10/PN16
DN200-400: Flanged PN16
Working pressure: 16 bar
Working temperature: -10°C/+200°C
With magnet

| DN | | L (mm) | Kg | Ref. |
|-----|--------|--------|-----|--------------|
| mm | inch | | | |
| 15 | 1/2" | 130 | 3,1 | F3240NA-0015 |
| 20 | 3/4" | 150 | 3,3 | F3240NA-0020 |
| 25 | 1" | 160 | 4,1 | F3240NA-0025 |
| 32 | 1 1/4" | 180 | 6,1 | F3240NA-0032 |
| 40 | 1 1/2" | 200 | 7,1 | F3240NA-0040 |
| 50 | 2" | 230 | 8,1 | F3240NA-0050 |
| 65 | 2 1/2" | 290 | 12 | F3240NA-0065 |
| 80 | 3" | 310 | 14 | F3240NA-0080 |
| 100 | 4" | 350 | 18 | F3240NA-0100 |
| 125 | 5" | 400 | 32 | F3240NA-0125 |
| 150 | 6" | 480 | 45 | F3240NA-0150 |
| 200 | 8" | 600 | 80 | F3240NA-0200 |
| 250 | 10" | 730 | 130 | F3240NA-0250 |
| 300 | 12" | 850 | 170 | F3240NA-0300 |
| 350 | 14" | 980 | 250 | F4240NA-0350 |
| 400 | 16" | 1100 | 360 | F4240NA-0400 |



Élimine les particules métalliques trop fines pour être filtrées
Eliminates metal particles that are too thin to be filtered

F4250

PN25

Filtre à tamis fonte - PN25

Ductile iron strainer - PN25



Corps : Fonte ductile GGG40
Chapeau : Fonte ductile GGG40
Tamis : Inox 304
Maille :
DN40-65 : 1,5 mm
DN80-125 : 3 mm
DN150-700 : 5 mm
Bouchon de vidange : Bronze
Boulonnerie : Acier galvanisé
Joint : EPDM
Raccordement : A brides PN25
Pression de service max : 25 bar
Température de service : -10°C/+80°C

Body: Ductile iron GGG40
Bonnet: Ductile iron GGG40
Screen: Stainless steel 304
Mesh:
DN40-65: 1.5 mm
DN80-125: 3 mm
DN150-700: 5 mm
Draining plug: Bronze
Bolts: Galvanized steel
Gasket: EPDM
Connection: Flanged PN25
Maximum working pressure: 25 bar
Working temperature: -10°C/+80°C

| DN | | L (mm) | Kg | Ref. |
|-----|--------|--------|-----|------------|
| mm | inch | | | |
| 40 | 1 1/2" | 205 | 9 | F4250-0040 |
| 50 | 2" | 217 | 10 | F4250-0050 |
| 65 | 2 1/2" | 222 | 12 | F4250-0065 |
| 80 | 3" | 264 | 20 | F4250-0080 |
| 100 | 4" | 335 | 34 | F4250-0100 |
| 125 | 5" | 335 | 36 | F4250-0125 |
| 150 | 6" | 433 | 58 | F4250-0150 |
| 200 | 8" | 524 | 95 | F4250-0200 |
| 250 | 10" | 637 | 153 | F4250-0250 |
| 300 | 12" | 762 | 266 | F4250-0300 |
| 350 | 14" | 769 | 288 | F4250-0350 |
| 400 | 16" | 1025 | 590 | F4250-0400 |
| 450 | 18" | 1045 | 735 | F4250-0450 |
| 500 | 20" | 1140 | 800 | F4250-0500 |
| 600 | 24" | - | - | F4250-0600 |

F4260

PN40

Filtre à tamis fonte - PN40

Ductile iron strainer - PN40



Corps : Fonte ductile GGG40
Chapeau : Fonte ductile GGG40
Tamis : Inox 304
Maille :
DN40-65 : 1,5 mm
DN80-125 : 3 mm
DN150-700 : 5 mm
Bouchon de vidange : Bronze
Boulonnerie : Acier galvanisé
Joint : EPDM
Raccordement : A brides PN40
Pression de service max : 40 bar
Température de service : -10°C/+80°C

Body: Ductile iron GGG40
Bonnet: Ductile iron GGG40
Screen: Stainless steel 304
Mesh:
DN40-65: 1.5 mm
DN80-125: 3 mm
DN150-700: 5 mm
Draining plug: Bronze
Bolts: Galvanized steel
Gasket: EPDM
Connection: Flanged PN40
Maximum working pressure: 40 bar
Working temperature: -10°C/+80°C

| DN | | L (mm) | Kg | Ref. |
|-----|--------|--------|-----|------------|
| mm | inch | | | |
| 40 | 1 1/2" | 205 | 9 | F4260-0040 |
| 50 | 2" | 217 | 10 | F4260-0050 |
| 65 | 2 1/2" | 222 | 12 | F4260-0065 |
| 80 | 3" | 264 | 20 | F4260-0080 |
| 100 | 4" | 335 | 34 | F4260-0100 |
| 125 | 5" | 335 | 36 | F4260-0125 |
| 150 | 6" | 433 | 58 | F4260-0150 |
| 200 | 8" | 524 | 95 | F4260-0200 |
| 250 | 10" | 637 | 153 | F4260-0250 |
| 300 | 12" | 762 | 266 | F4260-0300 |
| 350 | 14" | 769 | 288 | F4260-0350 |
| 400 | 16" | 1025 | 590 | F4260-0400 |
| 450 | 18" | 1045 | 735 | F4260-0450 |
| 500 | 20" | 1140 | 800 | F4260-0500 |
| 600 | 24" | - | - | F4260-0600 |





FILTRES À TAMIS LAITON
BRASS STRAINERS

F1142

Filtre à tamis laiton - femelle BSP - PN16
Female BSP brass strainer - PN16



Corps : Laiton
Tamis : Inox 304
Maille : 0,8 mm
Raccordement : Femelle BSP
Pression de service : 16 bar
Température de service max : -20°C / +100°C

Body: Brass
Screen: Stainless steel 304
Mesh: 0.8 mm
Connection: Female BSP
Working pressure: 16 bar
Maximum working temperature: -20°C / +100°C

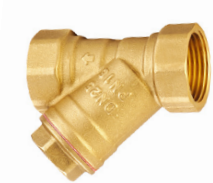
JUSQU'À ÉPUISEMENT DES STOCKS
WHILE STOCKS LAST

| DN | | L (mm) | Kg | Ref. |
|----|-------|--------|------|------------|
| mm | inch | | | |
| 15 | 1/2" | 56 | 0,12 | F1142-0015 |
| 20 | 3/4" | 68 | 0,22 | F1142-0020 |
| 25 | 1" | 77 | 0,33 | F1142-0025 |
| 32 | 1"1/4 | 94 | 0,51 | F1142-0032 |
| 40 | 1"1/2 | 105 | 0,76 | F1142-0040 |
| 50 | 2" | 125 | 1,35 | F1142-0050 |

F1142A

ACS

Filtre à tamis laiton - femelle BSP - PN16 - ACS
Female BSP brass strainer - PN16 - ACS



Corps : Laiton CW617N
Tamis : Inox 304
Joint de couvercle : PTFE
Raccordement : Femelle BSP
Pression de service : 16 bar
Température de service max : -20°C / +100°C

Body: Brass CW617N
Screen: Stainless steel 304
Body gasket: PTFE
Connection: Female BSP
Working pressure: 16 bar
Maximum Working temperature: -20°C / +100°C

ACS

| DN | | L (mm) | Kg | Ref. |
|----|-------|--------|-------|-------------|
| mm | inch | | | |
| 15 | 1/2" | 51,38 | 0,110 | F1142A-0015 |
| 20 | 3/4" | 63,37 | 0,165 | F1142A-0020 |
| 25 | 1" | 67,76 | 0,260 | F1142A-0025 |
| 32 | 1"1/4 | 88,31 | 0,520 | F1142A-0032 |
| 40 | 1"1/2 | 100,16 | 0,680 | F1142A-0040 |
| 50 | 2" | 120,02 | 1,049 | F1142A-0050 |

F1144

ACS

Filtre à tamis laiton - femelle BSP - PN16 - ACS
Female BSP brass strainer - PN16 - ACS



Corps : Laiton
Tamis : Inox 304
Maille : 0,8 mm
Raccordement : Femelle BSP
Pression de service : 16 bar
Température de service max : +120°C

Body: Brass
Screen: Stainless steel 304
Mesh: 0.8 mm
Connection: Female BSP
Working pressure: 16 bar
Maximum Working temperature: +120°C

ACS

| DN | | L (mm) | Kg | Ref. |
|----|-------|--------|-------|------------|
| mm | inch | | | |
| 10 | 3/8" | 48 | 0,074 | F1144-0010 |
| 15 | 1/2" | 58 | 0,135 | F1144-0015 |
| 20 | 3/4" | 68 | 0,215 | F1144-0020 |
| 25 | 1" | 75 | 0,335 | F1144-0025 |
| 32 | 1"1/4 | 90 | 0,475 | F1144-0032 |
| 40 | 1"1/2 | 108 | 0,770 | F1144-0040 |
| 50 | 2" | 130 | 1,280 | F1144-0050 |
| 65 | 2"1/2 | 150 | 2,100 | F1144-0065 |

F2142

ACS avec robinet de purge | ACS with drain valve

Filtre à tamis laiton avec robinet de purge - femelle BSP - PN16 - ACS
Female BSP brass strainer with drain valve - PN16 - ACS



Corps : Laiton
Tamis : Inox 304
Maille : 0,85 mm
Raccordement : Femelle BSP
Pression de service : 16 bar
Vanne de rinçage : Laiton
Température de service max : +120°C

Body: Brass
Screen: Stainless steel 304
Mesh: 0.85 mm
Connection: Female BSP
Working pressure: 16 bar
Drain valve: Brass
Maximum Working temperature: +120°C

ACS

| DN | | L (mm) | Kg | Ref. |
|----|-------|--------|-------|------------|
| mm | inch | | | |
| 15 | 1/2" | 58 | 0,24 | F2142-0015 |
| 20 | 3/4" | 68 | 0,32 | F2142-0020 |
| 25 | 1" | 75 | 0,44 | F2142-0025 |
| 32 | 1"1/4 | 90 | 0,545 | F2142-0032 |
| 40 | 1"1/2 | 108 | 0,895 | F2142-0040 |
| 50 | 2" | 130 | 1,4 | F2142-0050 |



FILTRES À TAMIS BRONZE
BRONZE STRAINERS

F2143

Filtre à tamis bronze - femelle BSP - PN20
Female BSP bronze strainer - PN20



Corps : Bronze
Tamis : Inox 304
Maille :
DN15-25 : 0,4 mm
DN32-50 : 0,5 mm
Raccordement : Femelle BSP
Pression de service : 20 bar
Température de service max : +120°C

Body: Bronze
Screen: Stainless steel 304
Mesh:
DN15-25: 0,4 mm
DN32-50: 0,5 mm
Connection: Female BSP
Working pressure: 20 bar
Maximum Working temperature: +120°C

JUSQU'À ÉPUISEMENT DES STOCKS
WHILE STOCKS LAST

| DN | | L (mm) | Kg | Ref. |
|----|-------|--------|-------|------------|
| mm | inch | | | |
| 15 | 1/2" | 58 | 0,144 | F2143-0015 |
| 20 | 3/4" | 67,5 | 0,21 | F2143-0020 |
| 25 | 1" | 82,5 | 0,325 | F2143-0025 |
| 32 | 1"1/4 | 91,5 | 0,484 | F2143-0032 |
| 40 | 1"1/2 | 106,5 | 0,773 | F2143-0040 |
| 50 | 2" | 126 | 1,350 | F2143-0050 |

F2143W

Filtre à tamis bronze - femelle/femelle BSP - PN20 - WRAS
Female BSP bronze strainer - PN20 - WRAS



Corps : Bronze
Tamis : Inox 304
Maille :
DN15-25 : 0,3 mm
DN32-50 : 0,5 mm
Joint torique : PTFE
Raccordement : Femelle/femelle BSP
Pression de service :
20 bar (températures ≤ 120°C)
16 bar (températures > 120°C)
Température de service : -10°C / + 170°C

Body: Bronze
Screen: Stainless steel 304
Mesh:
DN15-25: 0,3 mm
DN32-50: 0,5 mm
O-ring: PTFE
Connection: Female/female BSP
Working pressure:
20 bar (temperatures ≤ 120°C)
16 bar (temperatures > 120°C)
Working temperature: -10°C / + 170°C

BIENTÔT DISPONIBLE
COMING SOON



| DN | | L (mm) | Kg | Ref. |
|----|-------|--------|-------|-------------|
| mm | inch | | | |
| 15 | 1/2" | 58 | 0,184 | F2143W-0015 |
| 20 | 3/4" | 67,5 | 0,296 | F2143W-0020 |
| 25 | 1" | 82,5 | 0,424 | F2143W-0025 |
| 32 | 1"1/4 | 91,5 | 0,716 | F2143W-0032 |
| 40 | 1"1/2 | 106,5 | 0,975 | F2143W-0040 |
| 50 | 2" | 126 | 1,493 | F2143W-0050 |



FILTRES À TAMIS INOX
STAINLESS STEEL STRAINERS

F6169 (BSP) | F6769 (NPT)

Filtre à tamis Y taraudé Inox
Threaded type "Y" Stainless steel strainer



F6169 DN50 - BSP



Corps : Inox 316
Tamis : Inox 316
Joint : PTFE
Raccordement taraudé :
F6169-PF : BSP
F6769-PF : NPT
Pression de service : 40 bar
Température de service max :
-25°C / + 180°C
ATEX: II 2 GD CT2 :

Body: Stainless steel 316
Screen: Stainless steel 316
Bonnet gasket: PTFE
Connection:
F6169-PF: BSP threaded
F6769-PF: NPT threaded
Working pressure: 40 bar
Maximum Working temperature:
-25°C / + 180°C
ATEX: II 2 GD CT2:

BIENTÔT DISPONIBLE
COMING SOON



| DN | | L (mm) | Kg | Ref. |
|-----|-------|--------|------|------------------------------|
| mm | inch | | | |
| 08 | 1/4" | 64 | 0,2 | F6169-PF0008 F6769-PF0008 |
| 10 | 3/8" | 64 | 0,2 | F6169-PF0010 F6769-PF0010 |
| 15 | 1/2" | 64 | 0,21 | F6169-PF0015 F6769-PF0015 |
| 20 | 3/4" | 80 | 0,34 | F6169-PF0020 F6769-PF0020 |
| 25 | 1" | 90 | 0,59 | F6169-PF0025 F6769-PF0025 |
| 32 | 1"1/4 | 106 | 0,8 | F6169-PF0032 F6769-PF0032 |
| 40 | 1"1/2 | 119 | 1,06 | F6169-PF0040 F6769-PF0040 |
| 50 | 2" | 140 | 1,61 | F6169-PF0050 F6769-PF0050 |
| 65 | 2"1/2 | 167 | 2,99 | F6169-PF0065 F6769-PF0065 |
| 80 | 3" | 198 | 4,74 | F6169-PF0080 F6769-PF0080 |
| 100 | 4" | 238 | 7,88 | F6169-PF0100 F6769-PF0100 |

F6240

Filtre à tamis Y à brides Inox PN16
Flanged type "Y" Stainless steel strainer PN16



Corps : Inox 316
Tamis : Inox 304
Maille :
DN15-50 : 0,8 mm
DN65-80 : 1 mm
DN100-200 : 3 mm
Joint : PTFE
Raccordement :
DN15-150 : À brides PN10/PN16
DN200-400 : À brides PN16
Pression de service : 16 bar
Température de service max :
-20°C / 200°C

Body: Stainless steel 316
Screen: Stainless steel 304
Mesh:
DN15-50: 0,8 mm
DN65-80: 1 mm
DN100-200: 3 mm
Gasket: PTFE
Connection:
DN15-150: Flanged PN10/PN16
DN200-400: Flanged PN16
Working pressure: 16 bar
Maximum Working temperature:
+20°C / + 200°C

| DN | | L (mm) | Kg | Ref. |
|-----|-------|--------|------|------------|
| mm | inch | | | |
| 15 | 1/2" | 130 | 2 | F6240-0015 |
| 20 | 3/4" | 150 | 2,7 | F6240-0020 |
| 25 | 1" | 160 | 3,5 | F6240-0025 |
| 32 | 1"1/4 | 180 | 5 | F6240-0032 |
| 40 | 1"1/2 | 200 | 6,1 | F6240-0040 |
| 50 | 2" | 230 | 8,1 | F6240-0050 |
| 65 | 2"1/2 | 290 | 12,3 | F6240-0065 |
| 80 | 3" | 310 | 15,5 | F6240-0080 |
| 100 | 4" | 350 | 22 | F6240-0100 |
| 125 | 5" | 400 | 30 | F6240-0125 |
| 150 | 6" | 480 | 45,1 | F6240-0150 |
| 200 | 8" | 600 | 77,1 | F6240-0200 |



FILTRES À TAMIS ACIER
STEEL STRAINERS

FI5843

Filtere à tamis acier forgé
Forged carbon steel "Y" strainer



Corps, chapeau : ASTM A105 N
Tamis : Inox ASTM A240 316L
Maille : 0,8 mm
Etanchéité : Inox 316 + graphite
Pression de service max : 138 bar
Température de service max : -29°C/+425°C

Body, bonnet: ASTM A105 N
Screen: Stainless steel ASTM A240 316L
Mesh: 0.8 mm
Seal: Stainless steel 316+ graphite
Maximum Working pressure: 138 bar
Maximum working temperature: -29°C/+425°C

| DN | | L | Kg | BSP | SW | NPT |
|----|--------|-----|------|----------------|---------------|----------------|
| mm | inch | | | Ref. | Ref. | Ref. |
| 8 | 1/4" | 90 | 0,85 | FI5843BSP-0008 | FI5843SW-0008 | FI5843NPT-0008 |
| 10 | 3/8" | 90 | 0,78 | FI5843BSP-0010 | FI5843SW-0010 | FI5843NPT-0010 |
| 15 | 1/2" | 90 | 0,73 | FI5843BSP-0015 | FI5843SW-0015 | FI5843NPT-0015 |
| 20 | 3/4" | 110 | 1,22 | FI5843BSP-0020 | FI5843SW-0020 | FI5843NPT-0020 |
| 25 | 1" | 130 | 1,88 | FI5843BSP-0025 | FI5843SW-0025 | FI5843NPT-0025 |
| 32 | 1"1/4" | 160 | 4,75 | FI5843BSP-0032 | FI5843SW-0032 | FI5843NPT-0032 |
| 40 | 1"1/2" | 160 | 4,45 | FI5843BSP-0040 | FI5843SW-0040 | FI5843NPT-0040 |
| 50 | 2" | 160 | 6,5 | FI5843BSP-0050 | FI5843SW-0050 | FI5843NPT-0050 |

F5240

Filtere à tamis acier PN25/40
Steel strainer PN25/40



Corps, chapeau : ASTM A 216 WCB
Tamis : ASTM A182 F304
Maille :
DN15-50 : 1 mm
DN65-80 : 1,25 mm
DN100-200 : 1,6 mm
Joint : Graphite
Raccordement : A brides PN25/40
DN200 PN40
Pression de service max : 40 bar
Température de service max : -20°C/+400°C

Body, bonnet: ASTM A 216 WCB
Screen: ASTM A182 F304
Mesh:
DN15-50: 1 mm
DN65-80: 1.25 mm
DN100-200: 1.6 mm
Gasket: Graphite
Connection: Flanged PN25/40
DN200 PN40
Maximum Working pressure: 40 bar
Maximum working temperature:
-20°C/+400°C

| DN | | L (mm) | Kg | Ref. |
|-----|--------|--------|------|------------|
| mm | inch | | | |
| 15 | 1/2" | 130 | 2,65 | F5240-0015 |
| 20 | 3/4" | 150 | 3,8 | F5240-0020 |
| 25 | 1" | 160 | 4,8 | F5240-0025 |
| 32 | 1"1/4" | 180 | 6,9 | F5240-0032 |
| 40 | 1"1/2" | 200 | 9,5 | F5240-0040 |
| 50 | 2" | 230 | 11,9 | F5240-0050 |
| 65 | 2"1/2" | 290 | 16,9 | F5240-0065 |
| 80 | 3" | 310 | 22,1 | F5240-0080 |
| 100 | 4" | 350 | 31,6 | F5240-0100 |
| 125 | 5" | 400 | 54 | F5240-0125 |
| 150 | 6" | 480 | 75 | F5240-0150 |
| 200 | 8" | 600 | 137 | F5240-0200 |

FI5241

ASA 150

Filtere à tamis acier à brides - chapeau boulonné - ASA 150
Flanged steel "Y" strainer bolted bonnet - ASA 150



Corps : Acier ASTM A216 WCB
Tamis : Inox 304
Maille :
DN50 : 1 mm
DN65-300 : 1.5 mm
Joint de chapeau : Graphite + inox 304
Raccordement : A brides ASA 150 LBS
Pression de service max : 20 bar
Température de service max :
-29°C/+425°C

Body: Steel ASTM A216 WCB
Screen: Stainless steel 304
Mesh:
DN50: 1 mm
DN65-300: 1.5 mm
Bonnet gasket: Graphite + Stainless Steel 304
Connection: ASA 150 LBS Flanged
Maximum Working pressure: 20 bar
Maximum Working temperature:
-29°C/+425°C

| DN | | L (mm) | Kg | Ref. |
|-----|--------|--------|------|-------------|
| mm | inch | | | |
| 50 | 2" | 203 | 9,7 | FI5241-0050 |
| 65 | 2"1/2" | 216 | 23,5 | FI5241-0065 |
| 80 | 3" | 241 | 28 | FI5241-0080 |
| 100 | 4" | 292 | 37 | FI5241-0100 |
| 150 | 6" | 406 | 67 | FI5241-0150 |
| 200 | 8" | 495 | 91 | FI5241-0200 |
| 250 | 10" | 622 | 135 | FI5241-0250 |
| 300 | 12" | 699 | 168 | FI5241-0300 |



FILTRES À PANIER
BASKET STRAINERS



Ces filtres sont installés à l'entrée des pompes et avant les compteurs d'eau et les vannes de régulation pour les protéger des débris. Lorsque le changement du tamis est difficile avec un filtre Y, nous vous recommandons le filtre à panier. These strainers are installed between pumps and before water meters and control valves to protect them from debris. If changing the screen of a Y strainer is difficult, we recommend a basket strainer.

F4206 | F4246 | F4256 | F4266

Fonte ductile | Ductile iron

Filtre à panier fonte ductile
Strainer basket type ductile iron



Corps : Fonte ductile GGG40
Tamis : Inox 304
Maille : 5mm
Boulonnerie : Acier Inoxydable A2
Bouchon de purge : Acier Inoxydable 304
Dimension du trou de purge : 2"
Joint : Nitrile
Raccordement : À brides
Température de service : -10°C/+80°C



Body: Ductile Iron GGG40
Screen: Stainless steel 304
Mesh: 5mm
Bolts: Stainless steel A2
Drain plug: Stainless steel 304
Drain dimension: 2"
O-ring: Nitrile
Connection: Flanged
Working temperature: -10°C/+80°C



| DN | | L (mm) | Kg | PN10 | PN16 | PN25 | PN40 |
|------|------|--------|------|-----------------|------------|------------|------------|
| mm | inch | | | Ref. | Ref. | Ref. | Ref. |
| 100 | 4" | 330 | 42 | voir / see PN16 | F4246-0100 | F4256-0100 | F4266-0100 |
| 125 | 5" | 360 | 56 | | F4246-0125 | F4256-0125 | F4266-0125 |
| 150 | 6" | 390 | 73 | | F4246-0150 | F4256-0150 | F4266-0150 |
| 200 | 8" | 460 | 122 | F4206-0200 | F4246-0200 | F4256-0200 | F4266-0200 |
| 250 | 10" | 530 | 179 | F4206-0250 | F4246-0250 | F4256-0250 | F4266-0250 |
| 300 | 12" | 630 | 264 | F4206-0300 | F4246-0300 | F4256-0300 | F4266-0300 |
| 350 | 14" | 690 | 305 | F4206-0350 | F4246-0350 | F4256-0350 | F4266-0350 |
| 400 | 16" | 750 | 335 | F4206-0400 | F4246-0400 | F4256-0400 | F4266-0400 |
| 450 | 18" | 810 | 390 | F4206-0450 | F4246-0450 | F4256-0450 | F4266-0450 |
| 500 | 20" | 880 | 569 | F4206-0500 | F4246-0500 | F4256-0500 | F4266-0500 |
| 600 | 24" | 1000 | 962 | F4206-0600 | F4246-0600 | F4256-0600 | F4266-0600 |
| 700 | 28" | 1130 | 1460 | F4206-0700 | F4246-0700 | F4256-0700 | F4266-0700 |
| 800 | 32" | 1250 | 1896 | F4206-0800 | F4246-0800 | F4256-0800 | F4266-0800 |
| 900 | 36" | - | - | F4206-0900 | F4246-0900 | F4256-0900 | F4266-0900 |
| 1000 | 40" | 1500 | 2040 | F4206-1000 | F4246-1000 | F4256-1000 | F4266-1000 |



- Grande surface de filtration
- Équipé d'une purge
- Piquage en amont et aval pour manomètre

- Large filtration surface
- Equipped with drain plug
- Holes upstream and downstream for manometers

F5206 | F5246 | F5256 | F5266

Acier Carbone | Carbon steel

Filtre à panier acier carbone
Strainer basket type carbon steel



Corps : Acier carbone mécanosoudé
Tamis : Inox 304
Maille : 5mm
Boulonnerie : Acier Inoxydable A2
Bouchon de purge : Acier Inoxydable 304
Dimension du trou de purge : 2"
Raccordement : À brides
Température de service : -10°C/+80°C



Body: Carbon steel
Screen: Stainless Steel 304
Mesh: 5mm
Bolts: Stainless Steel A2
Drain plug: Stainless steel 304
Drain dimension: 2"
Connection: Flanged
Working temperature: -10°C/+80°C



| DN | | L (mm) | Kg | PN10 | PN16 | PN25 | PN40 |
|------|------|--------|------|------------|------------|------------|------------|
| mm | inch | | | Ref. | Ref. | Ref. | Ref. |
| 1100 | 44" | - | - | F5206-1100 | F5246-1100 | F5256-1100 | F5266-1100 |
| 1200 | 48" | 1800 | 2690 | F5206-1200 | F5246-1200 | F5256-1200 | F5266-1200 |





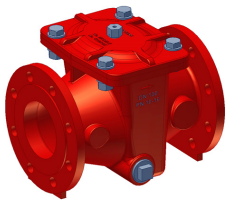
**BOÎTES À BOUE
H-STRAINERS**

F4200

PN10

Filtre boîte à boue à brides fonte ductile PN10

Flanged ductile iron H-strainer [PN10](#)



Corps, chapeau : Fonte ductile GGG40
Grille : Inox 316
Filtration standard : 2 mm
Joint : EPDM
Raccordement : A brides PN10
Pression de service max : 10 bar
Température de service max : +80°C

Body, bonnet: Ductile iron GGG40
Filter: Stainless steel 316
Standard Mesh: 2 mm
Seal: EPDM
Connection: Flanged PN10
Maximum Working pressure: 10 bar
Maximum working temperature: +80°C



**Bouchon de purge sur le chapeau
Drain plug on the bonnet**

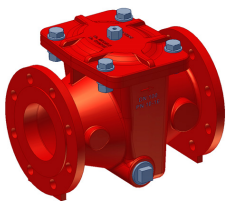
| DN | | L (mm) | Kg | Ref. |
|-----|------|--------|-----|------------|
| mm | inch | | | |
| 200 | 8" | 500 | 76 | F4200-0200 |
| 250 | 10" | 580 | 165 | F4200-0250 |
| 300 | 12" | 610 | 230 | F4200-0300 |
| 350 | 14" | 650 | 250 | F4200-0350 |
| 400 | 16" | 800 | 410 | F4200-0400 |
| 450 | 18" | 800 | 430 | F4200-0450 |
| 500 | 20" | 950 | 770 | F4200-0500 |
| 600 | 24" | 1100 | 850 | F4200-0600 |

F4240

PN16

Filtre boîte à boue à brides fonte ductile PN16

Flanged ductile iron H-strainer [PN16](#)



Corps, chapeau : Fonte ductile GGG40
Grille : Inox 316
Filtration standard : 2 mm
Joint : EPDM
Raccordement :
DN80-150 : A brides PN10/PN16
A partir DN200 : A brides PN16
Pression de service max : 16 bar
Température de service max : +80°C

Body, bonnet: Ductile Iron GGG40
Filter: Stainless steel 316
Standard Mesh: 2 mm
Seal: EPDM
Connection:
DN80-150: Flanged PN10/PN16
DN200-600: Flanged PN16
Maximum Working pressure: 16 bar
Maximum working temperature: +80°C

| DN | | L (mm) | Kg | Ref. |
|-----|------|--------|-----|------------|
| mm | inch | | | |
| 80 | 3" | 300 | 22 | F4240-0080 |
| 100 | 4" | 300 | 23 | F4240-0100 |
| 125 | 5" | 400 | 46 | F4240-0125 |
| 150 | 6" | 400 | 48 | F4240-0150 |
| 200 | 8" | 500 | 76 | F4240-0200 |
| 250 | 10" | 580 | 165 | F4240-0250 |
| 300 | 12" | 610 | 230 | F4240-0300 |
| 350 | 14" | 650 | 250 | F4240-0350 |
| 400 | 16" | 800 | 410 | F4240-0400 |
| 450 | 18" | 800 | 430 | F4240-0450 |
| 500 | 20" | 950 | 770 | F4240-0500 |
| 600 | 24" | 1100 | 850 | F4240-0600 |



**Penser à monter une vanne de sectionnement en amont.
Think about adding a block valve upstream.**



Facilité de démontage par le chapeau, idéal sur les gros DN :
- en cas de problème d'encombrement
- solution pour un nettoyage facilité
Easy disassembly with the bonnet, ideal for large DN :
- In case of a blockage problem
- A solution for easy cleaning