

RACCORD | BRIDE | JOINT COUPLING | FLANGE | GASKET

RACCORDS INOX
STAINLESS STEEL
COUPLINGS 316 > 317

RACCORDS ALUMINIUM
ALUMINIUM
COUPLINGS 318 > 319

BRIDES ET JOINTS
FLANGES & GASKETS
320 > 323



RACCORDS SYMÉTRIQUES INOX STAINLESS STEEL SYMETRICAL COUPLINGS

RACC6503

Raccord symétrique à douille annelée réduite à verrou avec collerette
Reduce hose coupling with lock and collar



Corps : Inox CF8M
Joint : FKM
Température de service :
-10°C/+180°C
Pression de service : 16 bar

Body: Stainless steel CF8M
Gasket: FKM
Working temperature: -10°C/+180°C
Working pressure: 16 bar

DN		L	Kg	Ref.
mm	inch			
40	1 1/2"	93	0,49	RACC6503-0040
50	2"	123,5	0,96	RACC6503-0050
65	2 1/2"	126	1,21	RACC6503-0065
80	3"	145	1,9	RACC6503-0080
100	4"	162	3,11	RACC6503-0100

RACC6144

Raccord symétrique femelle BSP sans verrou
Female BSP coupling without lock



Corps : Inox CF8M
Joint : FKM
Température de service :
-10°C/+180°C
Pression de service : 16 bar

Body: Stainless steel CF8M
Gasket: FKM
Working temperature: -10°C/+180°C
Working pressure: 16 bar

DN		L	Kg	Ref.
mm	inch			
15	1/2"	30	0,07	RACC6144-0015
20	3/4"	33	0,07	RACC6144-0020
25	1"	34	0,09	RACC6144-0025
32	1 1/4"	48	0,24	RACC6144-0032
40	1 1/2"	42	0,19	RACC6144-0040
50	2"	49	0,37	RACC6144-0050
65	2 1/2"	53	0,48	RACC6144-0065
80	3"	59	0,93	RACC6144-0080
100	4"	63	0,89	RACC6144-0100

RACC6142

Raccord symétrique male BSP sans verrou
Male BSP coupling without lock



Corps : Inox CF8M
Joint : FKM
Température de service :
-10°C/+180°C
Pression de service : 16 bar

Body: Stainless steel CF8M
Gasket: FKM
Working temperature: -10°C/+180°C
Working pressure: 16 bar

DN		L	Kg	Ref.
mm	inch			
20	3/4"	37	0,09	RACC6142-0020
25	1"	43	0,15	RACC6142-0025
32	1 1/4"	43,5	0,26	RACC6142-0032
40	1 1/2"	53	0,29	RACC6142-0040
50	2"	65	0,55	RACC6142-0050
65	2 1/2"	65	0,74	RACC6142-0065
80	3"	78	0,93	RACC6142-0080
100	4"	83	1,53	RACC6142-0100

RACC6141

Raccord symétrique femelle BSP à verrou
Female BSP coupling with lock



Corps : Inox CF8M
Joint : FKM
Température de service :
-10°C/+180°C
Pression de service : 16 bar

Body: Stainless steel CF8M
Gasket: FKM
Working temperature: -10°C/+180°C
Working pressure: 16 bar

DN		L	Kg	Ref.
mm	inch			
20	3/4"	73	0,22	RACC6141-0020
25	1"	73	0,27	RACC6141-0025
32	1 1/4"	73	0,35	RACC6141-0032
40	1 1/2"	86	0,4	RACC6141-0040
50	2"	90	0,77	RACC6141-0050
65	2 1/2"	89	0,89	RACC6141-0065
80	3"	106	1,35	RACC6141-0080
100	4"	132	2,33	RACC6141-0100



RACC6143

Raccord symétrique male BSP à verrou
Male BSP coupling with lock



Corps : Inox CF8M
Joint : FKM
Température de service :
-10°C/+180°C
Pression de service : 16 bar

Body: Stainless steel CF8M
Gasket: FKM
Working temperature: -10°C/+180°C
Working pressure: 16 bar

DN		L	Kg	Ref.
mm	inch			
20	3/4"	52,7	0,15	RACC6143-0020
25	1"	53,3	0,2	RACC6143-0025
32	1 1/4"	67	0,38	RACC6143-0032
40	1 1/2"	69,5	0,32	RACC6143-0040
50	2"	84,5	0,56	RACC6143-0050
65	2 1/2"	86	0,96	RACC6143-0065
80	3"	99	1,86	RACC6143-0080
100	4"	108	2,13	RACC6143-0100

RACC6145

Raccord symétrique à souder à verrou
Welded symetric coupling with lock



Corps : Inox CF8M
Joint : FKM
Température de service :
-10°C/+180°C
Pression de service : 16 bar

Body: Stainless steel CF8M
Gasket: FKM
Working temperature:
-10°C/+180°C
Working pressure: 16 bar

DN		L	Kg	Ref.
mm	inch			
15	1/2"	46,5	0,09	RACC6145-0015
20	3/4"	51,7	0,14	RACC6145-0020
25	1"	47,5	0,18	RACC6145-0025
32	1 1/4"	60,5	0,3	RACC6145-0032
40	1 1/2"	69,5	0,35	RACC6145-0040
50	2"	85	0,67	RACC6145-0050
65	2 1/2"	83	0,84	RACC6145-0065
80	3"	99	1,34	RACC6145-0080
100	4"	108	2,15	RACC6145-0100

RACC6541

Bouchon à verrou
Cap with lock and chain



Corps : Inox CF8M
Joint : FKM
Température de service :
-10°C/+180°C
Pression de service : 16 bar

Body: Stainless steel CF8M
Gasket: FKM
Working temperature: -10°C/+180°C
Working pressure: 16 bar

DN		L	Kg	Ref.
mm	inch			
20	3/4"	20	0,17	RACC6541-0020
25	1"	22	0,21	RACC6541-0025
32	1 1/4"	21	0,23	RACC6541-0032
40	1 1/2"	36	0,36	RACC6541-0040
50	2"	43	0,49	RACC6541-0050
65	2 1/2"	43	0,67	RACC6541-0065
80	3"	39	1,03	RACC6541-0080
100	4"	53	1,79	RACC6541-0100

RACC6543

Bouchon sans verrou
Cap without lock



Corps : Inox CF8M
Joint : FKM
Température de service :
-10°C/+180°C
Pression de service : 16 bar

Body: Stainless steel CF8M
Gasket: FKM
Working temperature: -10°C/+180°C
Working pressure: 16 bar

DN		L	Kg	Ref.
mm	inch			
25	1"	27	0,07	RACC6543-0025
32	1 1/4"	27	0,09	RACC6543-0032
40	1 1/2"	30	0,16	RACC6543-0040
50	2"	35	0,33	RACC6543-0050
65	2 1/2"	32	0,35	RACC6543-0065
80	3"	40,3	0,5	RACC6543-0080
100	4"	40,5	0,8	RACC6543-0100



RACCORDS SYMÉTRIQUES ALUMINIUM ALUMINIUM SYMETRICAL COUPLINGS

RACC8542

Demi raccord avec verrou à douille annelée
Half coupling with locking ring and hose shank



Corps : Aluminium
Joint : NBR
Pression de service : 16 bar

Body: Aluminium
Gasket: NBR
Working pressure: 16 bar

DN		L	Kg	Ref.
mm	inch			
20	3/4"	74,2	0,06	RACC8542-0020
25	1"	75,5	0,07	RACC8542-0025
32	1 1/4"	79	0,09	RACC8542-0032
40	1 1/2"	92	0,22	RACC8542-0040
50	2"	111,5	0,38	RACC8542-0050
65	2 1/2"	116	0,47	RACC8542-0065
80	3"	146	0,8	RACC8542-0080
100	4"	192	0,98	RACC8542-0100
150	6"	240	3,06	RACC8542-0150

RACC8143

Demi raccord avec verrou à douille fileté BSP
Half coupling with locking ring and BSP threaded end



Corps : Aluminium
Joint : NBR
Pression de service : 16 bar

Body: Aluminium
Gasket: NBR
Working pressure: 16 bar

DN		L	Kg	Ref.
mm	inch			
20	3/4"	52,7	0,05	RACC8143-0020
25	1"	56,5	0,07	RACC8143-0025
32	1 1/4"	67	0,11	RACC8143-0032
40	1 1/2"	69,5	0,16	RACC8143-0040
50	2"	84,5	0,3	RACC8143-0050
65	2 1/2"	86	0,34	RACC8143-0065
80	3"	99	0,59	RACC8143-0080
100	4"	108	0,86	RACC8143-0100
150	6"	158	3,19	RACC8143-0150

RACC8141

Demi raccord avec verrou à douille taraudée BSP
Half coupling with locking ring and BSP threaded end



Corps : Aluminium
Joint : NBR
Pression de service : 16 bar

Body: Aluminium
Gasket: NBR
Working pressure: 16 bar

DN		L	Kg	Ref.
mm	inch			
20	3/4"	59	0,05	RACC8141-0020
25	1"	68	0,09	RACC8141-0025
32	1 1/4"	68	0,12	RACC8141-0032
40	1 1/2"	86	0,21	RACC8141-0040
50	2"	106	0,37	RACC8141-0050
65	2 1/2"	109	0,44	RACC8141-0065
80	3"	103	0,76	RACC8141-0080
100	4"	136	1	RACC8141-0100
150	6"	120	2,35	RACC8141-0150



RACC8142

Demi raccord sans verrou à douille fileté BSP
Half coupling without locking ring and BSP threaded end



Corps : Aluminium
Joint : NBR
Pression de service : 16 bar

Body: Aluminium
Gasket: NBR
Working pressure: 16 bar

DN		L	Kg	Ref.
mm	inch			
20	3/4"	40	0,03	RACC8142-0020
25	1"	43	0,05	RACC8142-0025
32	1"1/4	43,5	0,07	RACC8142-0032
40	1"1/2	53	0,12	RACC8142-0040
50	2"	66,5	0,20	RACC8142-0050
65	2"1/2	66,5	0,29	RACC8142-0065
80	3"	78	0,35	RACC8142-0080
100	4"	83	0,52	RACC8142-0100

RACC8144

Demi raccord sans verrou à douille taraudée BSP
Half coupling without locking ring and BSP threaded end



Corps : Aluminium
Joint : NBR
Pression de service : 16 bar

Body: Aluminium
Gasket: NBR
Working pressure: 16 bar

DN		L	Kg	Ref.
mm	inch			
20	3/4"	30	0,03	RACC8144-0020
25	1"	34	0,05	RACC8144-0025
32	1"1/4	48	0,07	RACC8144-0032
40	1"1/2	44,5	0,12	RACC8144-0040
50	2"	48	0,20	RACC8144-0050
65	2"1/2	59,5	0,29	RACC8144-0065
80	3"	59	0,35	RACC8144-0080
100	4"	63	0,52	RACC8144-0100

RACC8541

Bouchon à poignée avec verrou et chaînette
Plug with chain and locking ring



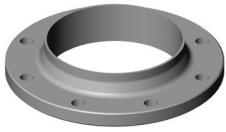
Corps : Aluminium
Joint : NBR
Pression de service : 16 bar

Body: Aluminium
Gasket: NBR
Working pressure: 16 bar

DN		L	Kg	Ref.
mm	inch			
20	3/4"	20	0,06	RACC8541-0020
25	1"	30	0,06	RACC8541-0025
32	1"1/4	21	0,08	RACC8541-0032
40	1"1/2	35	0,12	RACC8541-0040
50	2"	43	0,24	RACC8541-0050
65	2"1/2	43	0,3	RACC8541-0065
80	3"	49	0,48	RACC8541-0080
100	4"	53	0,69	RACC8541-0100
150	6"	85	2,28	RACC8541-0150


BRIDES ET JOINTS
FLANGES & GASKETS
BR5240

Bride à collerette acier forgé PN10/16 - EN 1092-1
 Forged steel welding neck flange PN10/16 - EN 1092-1



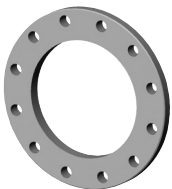
Type : Collerette à souder bout à bout

Type: Butt welding neck flange

DN		PN	Ref.
mm	inch		
15	1/2"	PN10/16/25/40	BR5240PN16-0015
20	3/4"	PN10/16/25/40	BR5240PN16-0020
25	1"	PN10/16/25/40	BR5240PN16-0025
32	1 1/4"	PN10/16/25/40	BR5240PN16-0032
40	1 1/2"	PN10/16/25/40	BR5240PN16-0040
50	2"	PN10/16	BR5240PN16-0050
65	2 1/2"	PN10/16	BR5240PN16-0065
80	3"	PN10/16	BR5240PN16-0080
100	4"	PN10/16	BR5240PN16-0100
125	5"	PN10/16	BR5240PN16-0125
150	6"	PN10/16	BR5240PN16-0150
200	8"	PN10	BR5240PN10-0200
250	10"	PN10	BR5240PN10-0250
300	12"	PN10	BR5240PN10-0300
350	14"	PN10	BR5240PN10-0350
400	16"	PN10	BR5240PN10-0400
200	8"	PN16	BR5240PN16-0200
250	10"	PN16	BR5240PN16-0250
300	12"	PN16	BR5240PN16-0300
350	14"	PN16	BR5240PN16-0350
400	16"	PN16	BR5240PN16-0400

BR5200

Bride plate acier forgé PN10/16 - EN 1092-1
 Forged steel flat flange PN10/16 - EN 1092-1



Type : Plate

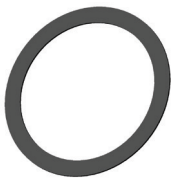
Type: Flat flange

DN		PN	Ref.
mm	inch		
15	1/2"	PN10/16/25/40	BR5200PN16-0015
20	3/4"	PN10/16/25/40	BR5200PN16-0020
25	1"	PN10/16/25/40	BR5200PN16-0025
32	1 1/4"	PN10/16/25/40	BR5200PN16-0032
40	1 1/2"	PN10/16/25/40	BR5200PN16-0040
50	2"	PN10/16	BR5200PN16-0050
65	2 1/2"	PN10/16	BR5200PN16-0065
80	3"	PN10/16	BR5200PN16-0080
100	4"	PN10/16	BR5200PN16-0100
125	5"	PN10/16	BR5200PN16-0125
150	6"	PN10/16	BR5200PN16-0150
200	8"	PN10	BR5200PN10-0200
250	10"	PN10	BR5200PN10-0250
300	12"	PN10	BR5200PN10-0300
350	14"	PN10	BR5200PN10-0350
400	16"	PN10	BR5200PN10-0400
200	8"	PN16	BR5200PN16-0200
250	10"	PN16	BR5200PN16-0250
300	12"	PN16	BR5200PN16-0300
350	14"	PN16	BR5200PN16-0350
400	16"	PN16	BR5200PN16-0400



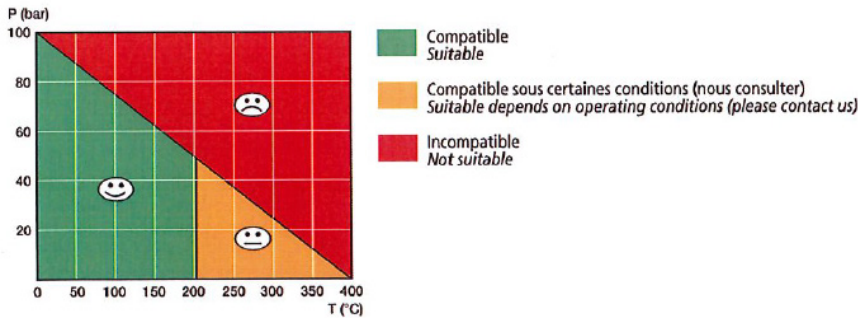
J7240

Joint de bride qualité "Oiltec" sans amiante - PN10/16
 "Oiltec" quality abestos free flange gasket - PN10/16



Épaisseur : 2 mm jusqu'au DN 250, 3 mm au delà.
 T° continue : +250°C (se reporter au passeport)
 Feuille de haute qualité composée d'un mélange de fibres minérales résistantes aux T° élevées et de fibres aramidées avec NBR spécial comme liant.

Thickness: 2 mm till DN 250, 3 mm over DN 250.
 Continuous T°: +250°C (check the technical sheet)
 High quality sheet containing mixture of T° resisting mineral & aramid fibres with a special NBR rubber binder.



DN		PN	Ref.
mm	inch		
15	1/2"	PN10/16/25/40	J7240PN16-0015
20	3/4"	PN10/16/25/40	J7240PN16-0020
25	1"	PN10/16/25/40	J7240PN16-0025
32	1 1/4"	PN10/16/25/40	J7240PN16-0032
40	1 1/2"	PN10/16/25/40	J7240PN16-0040
50	2"	PN10/16	J7240PN16-0050
65	2 1/2"	PN10/16	J7240PN16-0065
80	3"	PN10/16	J7240PN16-0080
100	4"	PN10/16	J7240PN16-0100
125	5"	PN10/16	J7240PN16-0125
150	6"	PN10/16	J7240PN16-0150
200	8"	PN10/16	J7240PN16-0200
250	10"	PN10	J7240PN10-0250
300	12"	PN10	J7240PN10-0300
350	14"	PN10	J7240PN10-0350
400	16"	PN10	J7240PN10-0400
250	10"	PN16	J7240PN16-0250
300	12"	PN16	J7240PN16-0300
350	14"	PN16	J7240PN16-0350
400	16"	PN16	J7240PN16-0400
500	20"	PN16	J7240PN16-0500
600	24"	PN16	J7240PN16-0600
700	28"	PN16	J7240PN16-0700
800	32"	PN16	J7240PN16-0800
900	36"	PN16	J7240PN16-0900
1000	40"	PN16	J7240PN16-1000

J7240A

Joint de bride EPDM ACS
 EPDM ACS gasket



Épaisseur : 3 mm
 Thickness: 3 mm

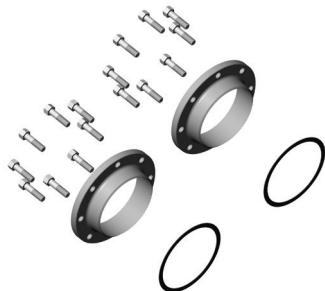


DN		PN	Ref.
mm	inch		
15	1/2"	PN10/16/25/40	J7240APN16-0015
20	3/4"	PN10/16/25/40	J7240APN16-0020
25	1"	PN10/16/25/40	J7240APN16-0025
32	1 1/4"	PN10/16/25/40	J7240APN16-0032
40	1 1/2"	PN10/16/25/40	J7240APN16-0040
50	2"	PN10/16	J7240APN16-0050
65	2 1/2"	PN10/16	J7240APN16-0065
80	3"	PN10/16	J7240APN16-0080
100	4"	PN10/16	J7240APN16-0100
125	5"	PN10/16	J7240APN16-0125
150	6"	PN10/16	J7240APN16-0150
200	8"	PN10/16	J7240APN16-0200
250	10"	PN10	J7240APN10-0250
300	12"	PN10	J7240APN10-0300
350	14"	PN10	J7240APN10-0350
400	16"	PN10	J7240APN10-0400
450	18"	PN10	J7240APN10-0450
500	20"	PN10	J7240APN10-0500
600	24"	PN10	J7240APN10-0600
250	10"	PN16	J7240APN16-0250
300	12"	PN16	J7240APN16-0300
350	14"	PN16	J7240APN16-0350
400	16"	PN16	J7240APN16-0400
450	18"	PN16	J7240APN16-0450
500	20"	PN16	J7240APN16-0500
600	24"	PN16	J7240APN16-0600

EQBRCACGSTD

Equipement pour appareils de robinetterie standard à brides

Equipment for standard valves



Composé de :

- 2 brides à collerette acier au carbone
- 2 joints sans amiante qualité "Oiltec"
- Boulonnerie acier zingué Classe 8.8

Comprised of:

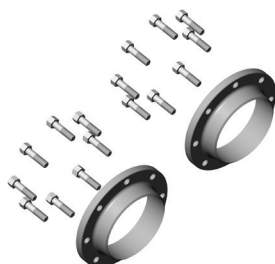
- 2 carbon steel welding neck flanges
- 2 «Oiltec» quality asbestos free gaskets
- Zinc steel bolts & nuts Grade 8.8

DN		PN	Ref.
mm	inch		
15	1/2"	PN10/16/25/40	EQBRCACGSTD16-0015
20	3/4"	PN10/16/25/40	EQBRCACGSTD16-0020
25	1"	PN10/16/25/40	EQBRCACGSTD16-0025
32	1 1/4"	PN10/16/25/40	EQBRCACGSTD16-0032
40	1 1/2"	PN10/16/25/40	EQBRCACGSTD16-0040
50	2"	PN10/16	EQBRCACGSTD16-0050
65	2 1/2"	PN10/16	EQBRCACGSTD16-0065
80	3"	PN10/16	EQBRCACGSTD16-0080
100	4"	PN10/16	EQBRCACGSTD16-0100
125	5"	PN10/16	EQBRCACGSTD16-0125
150	6"	PN10/16	EQBRCACGSTD16-0150
200	8"	PN10	EQBRCACGSTD10-0200
250	10"	PN10	EQBRCACGSTD10-0250
300	12"	PN10	EQBRCACGSTD10-0300
350	14"	PN10	EQBRCACGSTD10-0350
400	16"	PN10	EQBRCACGSTD10-0400
200	8"	PN16	EQBRCACGSTD16-0200
250	10"	PN16	EQBRCACGSTD16-0250
300	12"	PN16	EQBRCACGSTD16-0300
350	14"	PN16	EQBRCACGSTD16-0350
400	16"	PN16	EQBRCACGSTD16-0400

EQBRCACGVPW

Equipement pour vannes papillon oreilles de centrage

Equipment for wafer butterfly valves



Composé de :

- 2 brides à collerette acier au carbone
- Boulonnerie acier zingué Classe 8.8

Comprised of:

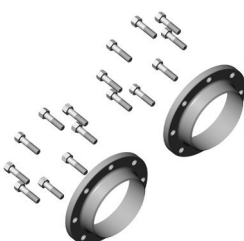
- 2 carbon steel welding neck flanges
- Zinc steel bolts & nuts Grade 8.8

DN		PN	Ref.
mm	inch		
40	1 1/2"	PN10/16	EQBRCACGVPW16-0040
50	2"	PN10/16	EQBRCACGVPW16-0050
65	2 1/2"	PN10/16	EQBRCACGVPW16-0065
80	3"	PN10/16	EQBRCACGVPW16-0080
100	4"	PN10/16	EQBRCACGVPW16-0100
125	5"	PN10/16	EQBRCACGVPW16-0125
150	6"	PN10/16	EQBRCACGVPW16-0150
200	8"	PN16	EQBRCACGVPW16-0200
250	10"	PN16	EQBRCACGVPW16-0250
300	12"	PN16	EQBRCACGVPW16-0300
350	14"	PN10	EQBRCACGVPW10-0350
400	16"	PN10	EQBRCACGVPW10-0400
350	14"	PN16	EQBRCACGVPW16-0350
400	16"	PN16	EQBRCACGVPW16-0400

EQBRCACGVPL

Equipement pour vannes papillon oreilles taraudées

Equipment for lug type butterfly valves



Composé de :

- 2 brides à collerette acier au carbone
- Visserie acier zingué Classe 8.8

Comprised of:

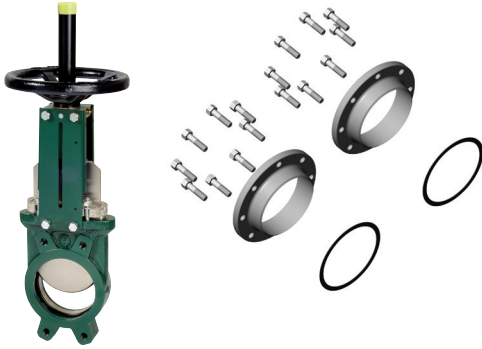
- 2 carbon steel welding neck flanges
- Zinc steel bolts & nuts Grade 8.8

DN		PN	Ref.
mm	inch		
40	1 1/2"	PN10/16	EQBRCACGVPL16-0040
50	2"	PN10/16	EQBRCACGVPL16-0050
65	2 1/2"	PN10/16	EQBRCACGVPL16-0065
80	3"	PN10/16	EQBRCACGVPL16-0080
100	4"	PN10/16	EQBRCACGVPL16-0100
125	5"	PN10/16	EQBRCACGVPL16-0125
150	6"	PN10/16	EQBRCACGVPL16-0150
200	8"	PN10	EQBRCACGVPL10-0200
250	10"	PN10	EQBRCACGVPL10-0250
300	12"	PN10	EQBRCACGVPL10-0300
200	8"	PN16	EQBRCACGVPL16-0200
250	10"	PN16	EQBRCACGVPL16-0250
300	12"	PN16	EQBRCACGVPL16-0300



EQBRACGVG

Equipement pour vannes à guillotine
Equipment for knife gate valves



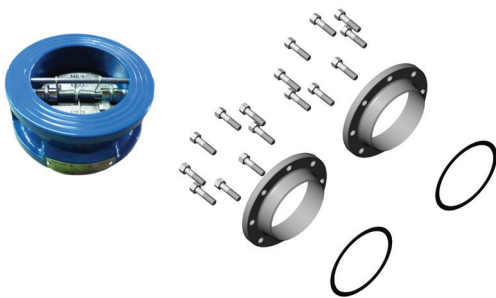
Composé de :
- 2 brides à collerette acier au carbone
- 2 joints sans amiante qualité "Oiltec"
- Boulons et vis acier zingué Classe 8.8

Comprised of:
- 2 carbon steel welding neck flanges
- 2 "Oiltec" quality asbestos free gaskets
- Zinc steel screws, bolts & nuts Grade 8.8

DN		PN	Ref.
mm	inch		
50	2"	PN10/16/25/40	EQBRACGVG16-0050
65	2 1/2"	PN10/16/25/40	EQBRACGVG16-0065
80	3"	PN10/16/25/40	EQBRACGVG16-0080
100	4"	PN10/16/25/40	EQBRACGVG16-0100
125	5"	PN10/16/25/40	EQBRACGVG16-0125
150	6"	PN10/16	EQBRACGVG16-0150
200	8"	PN10	EQBRACGVG10-0200
250	10"	PN10	EQBRACGVG10-0250
300	12"	PN10	EQBRACGVG10-0300
350	14"	PN10	EQBRACGVG10-0350
400	16"	PN10	EQBRACGVG10-0400

EQBRACGCB16

Equipement pour clapets à double battants
Equipment for dual plates check valves



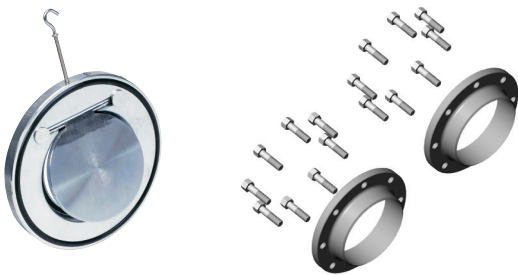
Composé de :
- 2 brides à collerette acier au carbone
- 2 joints sans amiante qualité "Oiltec"
- Boulonnerie acier zingué Classe 8.8

Comprised of:
- 2 carbon steel welding neck flanges
- 2 "Oiltec" quality asbestos free gaskets
- Zinc steel bolts & nuts Grade 8.8

DN		PN	Ref.
mm	inch		
40	1 1/2"	PN10/16	EQBRACGCB16-0040
50	2"	PN10/16	EQBRACGCB16-0050
65	2 1/2"	PN10/16	EQBRACGCB16-0065
80	3"	PN10/16	EQBRACGCB16-0080
100	4"	PN10/16	EQBRACGCB16-0100
125	5"	PN10/16	EQBRACGCB16-0125
150	6"	PN10/16	EQBRACGCB16-0150
200	8"	PN16	EQBRACGCB16-0200
250	10"	PN16	EQBRACGCB16-0250
300	12"	PN16	EQBRACGCB16-0300
350	14"	PN16	EQBRACGCB16-0350
400	16"	PN16	EQBRACGCB16-0400

EQBRACGCS16

Equipement pour clapets à simple battant
Equipment for single swing check valves



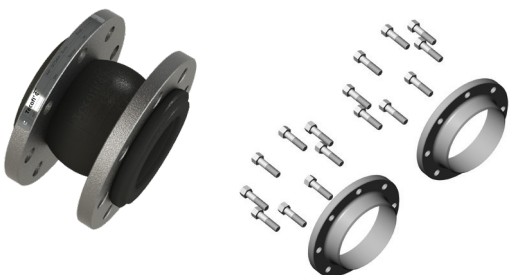
Composé de :
- 2 brides à collerette acier au carbone
- Boulonnerie acier zingué Classe 8.8

Comprised of:
- 2 carbon steel welding neck flanges
- Zinc steel bolts & nuts Grade 8.8

DN		PN	Ref.
mm	inch		
40	1 1/2"	PN10/16	EQBRACGCS16-0040
50	2"	PN10/16	EQBRACGCS16-0050
65	2 1/2"	PN10/16	EQBRACGCS16-0065
80	3"	PN10/16	EQBRACGCS16-0080
100	4"	PN10/16	EQBRACGCS16-0100
125	5"	PN10/16	EQBRACGCS16-0125
150	6"	PN10/16	EQBRACGCS16-0150
200	8"	PN16	EQBRACGCS16-0200
250	10"	PN16	EQBRACGCS16-0250
300	12"	PN16	EQBRACGCS16-0300
350	14"	PN16	EQBRACGCS16-0350
400	16"	PN16	EQBRACGCS16-0400

EQBRACGDI

Equipement pour compensateurs de dilatation
Equipment for expansion joints



Composé de :
- 2 brides à collerette acier au carbone
- Boulonnerie acier zingué Classe 8.8

Comprised of:
- 2 forged steel welding neck flanges
- Zinc steel bolts & nuts Grade 8.8

DN		PN	Ref.
mm	inch		
32	1 1/4"	PN10/16	EQBRACGDI16-0032
40	1 1/2"	PN10/16	EQBRACGDI16-0040
50	2"	PN10/16	EQBRACGDI16-0050
65	2 1/2"	PN10/16	EQBRACGDI16-0065
80	3"	PN10/16	EQBRACGDI16-0080
100	4"	PN10/16	EQBRACGDI16-0100
125	5"	PN10/16	EQBRACGDI16-0125
150	6"	PN10/16	EQBRACGDI16-0150
200	8"	PN10	EQBRACGDI10-0200
250	10"	PN10	EQBRACGDI10-0250
300	12"	PN10	EQBRACGDI10-0300
200	8"	PN16	EQBRACGDI16-0200
250	10"	PN16	EQBRACGDI16-0250
300	12"	PN16	EQBRACGDI16-0300