

# Tecofi'Φ

VALVE DESIGNER - FRANCE

## TECOFI FRANCE

83 rue Marcel Mérieux  
69960 Corbas - FRANCE

Tél : +33 (0)4 72 79 05 79  
Fax : +33 (0)4 78 90 19 19  
Mail : [sales@tecofi.fr](mailto:sales@tecofi.fr)

[www.tecofi.fr](http://www.tecofi.fr)



VALVES FOR **MINING INDUSTRY**



# PINCH KNIFE GATE VALVES

*Wafer type bidirectional knife gate valve. One-piece cast iron body. Stainless steel gate.  
Two rubber sleeves. Provides high flow rates with low pressure drop. Various seat materials available.  
Face to face dimension in accordance with Tecofi standard.*

## ● GENERAL APPLICATIONS

This knife gate valve is suitable for working in the mining industry, in loaded fluid transport lines, such as : water with stones, sludge, etc. and in general it is used for abrasive fluids in the chemical industry and waste water.

Designed for the following applications:

- Mining
- Sewage treatment
- Electrical power stations
- Chemical plants
- Energy Sector
- Thermal power stations

This knife gate valve's main characteristic is that it provides a full continuous flow.

This means that in open position there are no turbulences in the fluid.

## ● SIZES

DN50 to DN1400 (upper sizes on request).

## ● DIFFERENTIAL PRESSURE

	PN max
DN50 to DN600	10 kg/cm <sup>2</sup>
DN700 to DN1400	6 kg/cm <sup>2</sup>

The pressures indicated in the table, can be used in both directions.

## ● DIRECTIVES

Machinery Directive: DIR 2006/42/EC (MACHINERY)

Pressure Equipment Directive: DIR 97/23/EC (PED) ART.3, P.3

Potential Explosive Atmospheres Directive: DIR 94/9/EC (ATEX) CAT.3 ZONE 2 and 22

GD for further information on categories and zones please contact the Tecofi Technical Commercial Dept.

## Knife gate valves for MINING INDUSTRY



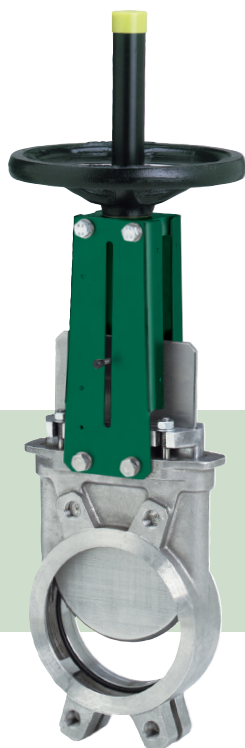
## ● FLANGE DRILL HOLE

DIN PN10 & ANSI B16.5  
(150 LB)

# KNIFE GATE VALVES

Leader in the manufacturing of knife gate valves, Tecofi has a large range able to respond to all needs and applications.

## STANDARD KNIFE GATE VALVE



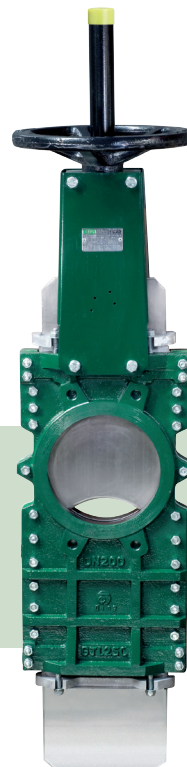
This valve suits to difficult applications, such as pasty products and powders.

## UNDER SILO KNIFE GATE VALVE



This knife gate valve was specially developed for an under silo assembly. It allows you to get rid of dry products like dust or grains thanks to blowing holes, which avoid the stuffing and the accumulations of product, so the jamming of the gate.

## THROUGH CONDUIT KNIFE GATE VALVE



This valve is a two pieces body without retention area, with two seat seals which allow a bi-directional tightness. This valve is especially adapted for the pulp and paper industry, in pulp outlets. The principal of the gate's movement works like a "cigar cutter".

## APPLICATIONS

Pulp and paper  
Water treatment  
Wine industry  
Powders

Silo  
Cement  
Powders

Paper industry with impurities  
(staples)

## WORKING PRESSURE

DN50/250: 10 bar  
DN300/450: 7 bar  
DN500/600: 4 bar  
DN700/1200: 2 bar

DN50/150: 2,5 bar  
DN200: 2 bar  
DN250/300: 1,5 bar  
DN400: 1,3 bar

DN50/250: 10 bar  
DN300/450: 6 bar  
DN500/600: 3,5 bar  
DN700/1200: 2 bar

# BUTTERFLY VALVES

*The butterfly valve is a 1/4 turn valve which also allows you to do regulation. These valves are especially adapted for general uses and non-viscous industrial fluids.*

## BUTTERFLY VALVE WITH SLEEVE «TECFLY»



The butterfly valve with sleeve is particularly suitable for general fluids, such as water, oils and acids.

### APPLICATION

HVAC  
Water treatment  
Industry

### WORKING PRESSURE

DN40/300 : 16 bar

## BUTTERFLY VALVE WITH FLANGES «TECLARGE»



Between flanges or double flanges, this valve is used for neutral liquids such as water.

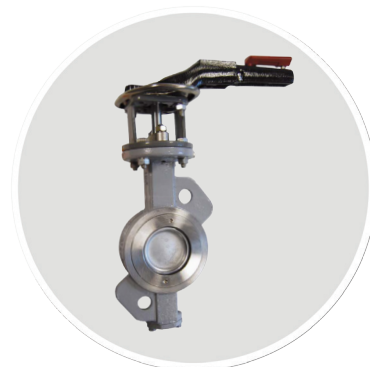
### APPLICATION

HVAC  
Water treatment

### WORKING PRESSURE

DN350/1200 : 10 bar  
Option : 16 bar on request

## HIGH PERFORMANCE BUTTERFLY VALVE «TECSUP»



The high performance butterfly valve respond to the most restrictive operating conditions in terms of pressure and temperature.

### APPLICATION

Steam, Chemical products

### WORKING PRESSURE

DN50/600 : 16/25/40/64 bar,  
ASA150/300Lbs

# PINCH VALVES

*The pinch valve is a full bore valve that shuts via manual handwheel or via pneumatic air. It is mainly used in the waste water industry, for sludge, or in the case of abrasive products like pneumatic conveying, or conveying powders or pulverulent substances...*

## MANUAL PINCH VALVE



### CONSTRUCTION

Cast aluminum body  
with handwheel operator

### REPLACABLE SLEEVE

Natural rubber anti-abrasion / EPDM / NBR / Butyl / Hypalon / FPM / Neoprene

### WORKING PRESSURE

DN10/65 : 4 bar  
DN80/200 : 3 bar

## PNEUMATIC PINCH VALVE



### CONSTRUCTION

Cast aluminum body  
operated by air under pressure.

### PINCH

Natural rubber anti-abrasion / EPDM / NBR / Neoprene / Butyl / Hypalon / FPM

### WORKING PRESSURE

DN40/150 : 6 bar  
DN200 : 4 bar  
DN250 : 2.5 bar