

Ref. : VP 4448-08.pas

Rev. : E

Date : 16/04/2014

Page : 1/1

# WAFER TYPE BUTTERFLY VALVE WITH GEAR BOX TECLARGE PN16 VP 4448-08

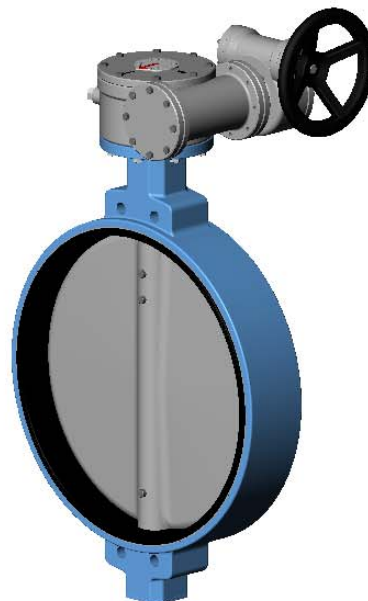


## APPLICATION

General use : water, sludge, etc.

## GENERAL CHARACTERISTICS

Design in accordance with NF EN 593.  
Tightness in both ways, NF EN 12266-1, ISO 5208, DIN 3230.  
Two kinds of sleeve:  
In dovetail shape ensures a perfect assembling (DN350-400)  
Sleeve internally reinforced in aluminium giving a low torque.  
Stem: crossing stem (DN350-600) or half stem high and low for upper DN.  
Self lubricant bearing in copper alloy.  
Supplementary tightness on stem by o'rings.



## CONSTRUCTION

6	1	Gear box		
5	1	Bottom cover	EN-GJL-250	DIN: GG25 ASTM: A48 class 40B BS: 1452 Grade 250
4	1	Stem	Stainless steel 410	DIN: 1.4006 ASTM: AISI 410 BS: 410 S 21
3	1	Sleeve	Heat EPDM	
2	1	Disc	EN-GJS-400-15	DIN: GGG 40 ASTM: A536 65-45-12 BS: EN-JS1030
1	1	Body	EN-GJS-400-15	DIN: GGG 40 ASTM: A536 65-45-12 BS: EN-JS1030
Pos.	Qty.	Description	Material	

## DIMENSIONS

DN		ISO	G	H	L	Ø K	n1 x Ø L	V	W	Ø P	Weight (kg)
mm	inch										
350	14"	F10	267	454	76,5	470	4 x Ø28	226	-	300	55,4
400	16"	F14	309	505	86	525	4 x Ø31	420	310	300	78,8
450	18"	F14	329	527	105	585	4 x Ø31	420	310	300	105,2
500	20"	F14	361	600	131	650	4 x Ø34	460	385	400	171,5
600	24"	F16	459	682	152	770	4 x Ø37	520	385	400	260,1
700	28"	F25	520	749	163	840	4 x Ø37	580	453	450	422
800	32"	F25	591	797	188	950	4 x Ø41	580	453	450	506
900	36"	F25	672	920	203	1050	4 x Ø41	660	516	500	1024
1000	40"	F25	719	1002	216	1170	4 x M39	660	516	500	1195
1200	48"	F30	863	1215	276	1390	4 x M45	713	725	550	1644

## PRESSURE TEMPERATURE RATING

Maxi working pressure: 16 bar.  
Working temperature : -15°C / + 130°C.  
Peak temperature : -30°C / +150°C

## STANDARDS

Pressure test according to standards EN 12266-1, DIN 3230, BS 5154 and ISO 5208 :

Body : 24 bar.

Seat : 17,6 bar.

Wafer type ISO PN16 connections according to standard EN 1092-2.

