

Ref. : VOC4250-05FSH

Rev. : Initial

Date : 23/12/2014

Page : 1/1

RESILIENT SEAT GATE VALVE

VOC 4250-05FSH



Tecofi
VALVE DESIGNER - FRANCE

APPLICATION

General use : drinking water distribution

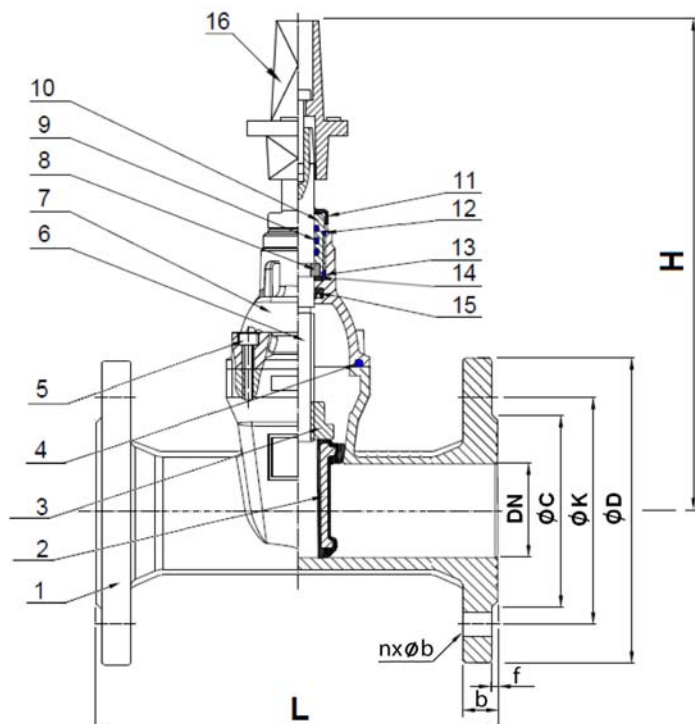
GENERAL CHARACTERISTICS

Full bore.
Stainless steel non rising stem.
Clockwise to close.
Sliding pad (to facilitating the wedge movement) up to DN200.
Ductile iron wedge EPDM coated. No retention area.
Heel positioning. NBR bonnet gasket.
Screws bonnet protected. 3 NBR O ring on stem.
Possibility to change stem gasket under pressure.
Epoxy painting RAL 5005 color 250 µm thickness.
Dust-coat on stem. ISO PN10/16 flanges R.F.
With square drive nut



CONSTRUCTION

16	Square	Ductile iron EN GJS-500-7
15	Auto sealing ring	NBR
14	Ring	Nylon 66
13	Stem O ring	NBR
12	Stem O ring	NBR
11	Dust-coat	NBR
10	Nut	Brass CuZn39Pb2
9	Stem O ring	NBR
8	Holding ring	Brass CuZn39Pb2
7	Bonnet	Ductile iron EN GJS-500-7
6	Stem	Stainless steel 420
5	Bonnet screw	Steel C35
4	Bonnet gasket	NBR
3	Stem nut	Brass CuZn39Pb2
2	Wedge	Ductile iron EN GJS-500-7 + EPDM
1	Body	Ductile iron EN GJS-500-7
Pos.	Description	Material



DIMENSIONS

DN	L	H	ØC	ØD	ØK	nxØd	f	b	L1	Ød	A	B	Weight (kg)	
mm	inch				PN10/PN16	PN10/PN16								
40	1"1/2	240	280	84	150	110	4x19	3	19	66	10	14	34	7,80
50	2"	250	285	99	165	125	4x19	3	19	66	10	14	34	9,48
65	2"1/2	270	300	118	185	145	4x19	3	19	66	10	14	34	13,10
80	3"	280	320	132	200	160	8x19	3	19	63	10	17	34	15,30
100	4"	300	390	156	220	180	8x19	3	19	63	10	17	34	20,50
125	5"	325	430	184	250	210	8x19	3	19	63	10	19	36	24,70
150	6"	350	470	211	285	240	8x23	3	19	63	10	19	36	35,90
200	8"	400	560	266	340	295	8x23/12x23	3	20	63	10	19	36	61,20
250	10"	450	680	319	405	350/355	12x23/12x28	3	22	63	12	24	42,5	98,90
300	12"	500	770	370	460	400/410	12x23/12x28	4	24,5	63	12	24	42,5	134,90

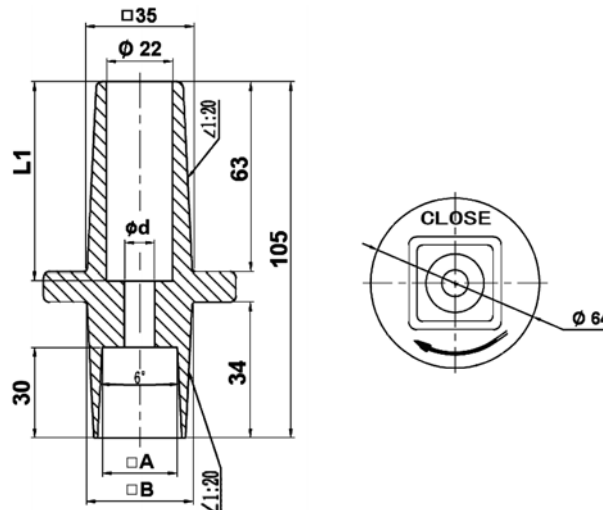
WORKING CONDITIONS

Maximum working pressure : 16 bar.
Maximum working temperature: -10°C / +80°C

STANDARDS

Fabrication according to ISO 9001 :2008
Designing according to DIN 3352.4
Tests according to EN 12266-1, Range A
DIRECTIVE 2014/68/UE : Products excluded from directive (article 3, § 3) up to DN300
Face to face according to EN 558 series 15 (DIN 3202 F5)
Flanges R.F. according to EN 1092-2 PN10/16

Operating square dimensions



TECOFI France - 83, Rue Marcel Mérieux 69960 Corbas - FRANCE
Tél. +33 (0) 4 72 79 05 79 - Fax +33 (0) 4 78 90 19 19 / +33 (0) 4 72 79 05 70
Adresses e-mail : sales@tecofi.fr ; tecofi@tecofi.fr / Site web : www.tecofi.fr

Ref. : VOC4250-05FSH.pas

Rev. : Initial

Date : 23/12/2014

Page : 1/1

RESILIENT SEAT GATE VALVE

VOC 4250-05FSH



Tecofi
VALVE DESIGNER - FRANCE

APPLICATION

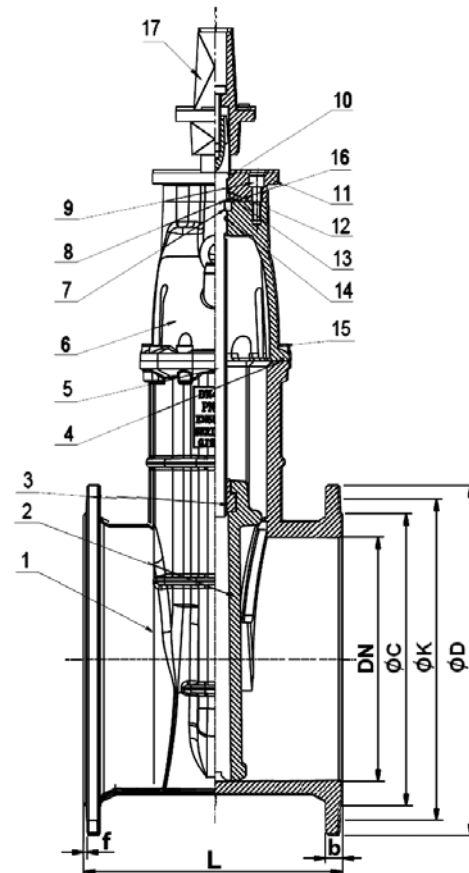
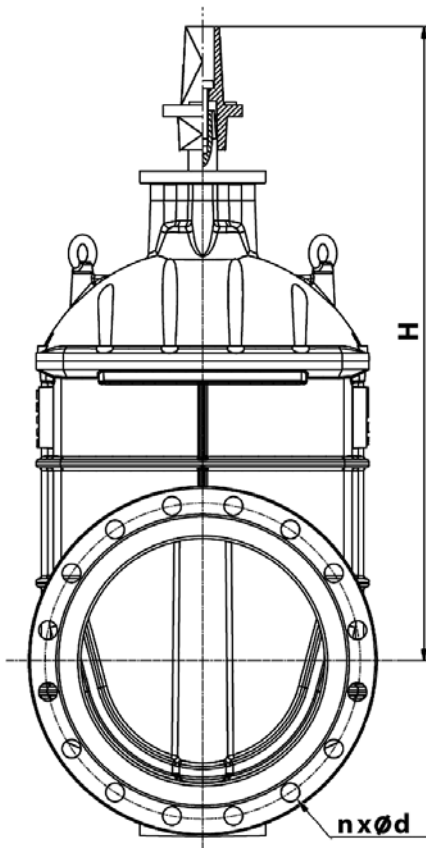
General use : drinking water distribution.

GENERAL CHARACTERISTICS

Full bore.
Stainless steel non rising stem.
Clockwise to close.
Ductile iron wedge EPDM coated.
No retention area.
Heel positioning. NBR bonnet gasket.
Screws bonnet protected. 3 NBR O ring on stem.
Possibility to change stem gasket under pressure.
Epoxy painting RAL 5005 color 250 µm thickness.
Dust-coat on stem. ISO PN10/16 flanges R.F.
With square drive nut

CONSTRUCTION

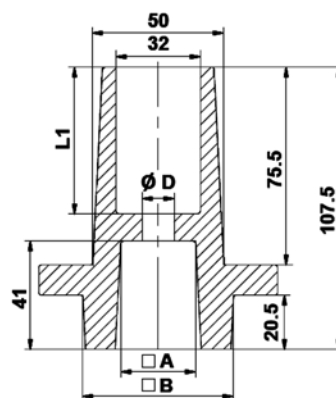
17	Square	Ductile iron EN GJS-500-7
16	O ring	NBR
15	Bonnet bolt	Steel C35
14	Stem nut	NBR
13	Ring	Nylon 66
12	O ring	NBR
11	Gland	Ductile iron EN GJS-500-7
10	Dust-coat	NBR
9	Screw	Steel RSt37-2
8	O ring	NBR
7	Holding ring	Brass CuZn39Pb2
6	Bonnet	Ductile iron EN GJS-500-7
5	Stem	Stainless steel 420
4	Bonnet gasket	NBR
3	Stem nut	Brass CuZn39Pb2
2	Wedge	Ductile iron EN GJS-500-7 + EPDM
1	Body	Ductile iron EN GJS-500-7
Pos.	Description	Material



DIMENSIONS

DN	mm	inch	L	H	ØC	ØD	ØK		nxØd		f	b	L1	Ød	A	B	Weight (kg)
							PN10	PN16	PN10	PN16							
350	14"	550	900	429	520	460	470	16x23	16x28	4	26,5	56	12	28,5	57,5	225,90	
400	16"	600	1000	480	580	515	525	16x28	16x31	4	28	56	12	28,5	57,5	248,50	
450	18"	650	1150	530	640	565	-	20x28	-	4	30	-	-	-	-	410,00	
500	20"	700	1330	582	715	620	-	20x28	-	4	31,5	-	-	-	-	517,30	
600	24"	800	-	682	840	725	-	20x31	-	5	36	-	-	-	-	810,00	

Operating square dimensions (DN350-400)



WORKING CONDITIONS

Maximum working pressure : 16 bar from DN350 to DN400
10 bar over

Maximum working temperature : -10°C / +110°C

STANDARDS

Fabrication according to ISO 9001 :2008
Designing according to DIN 3352.4
Tests according to EN 12266-1, Range A
DIRECTIVE 2014/68/UE : Products excluded from directive (article 3, § 3) up to DN300
Face to face according to EN 558 series 15 (DIN 3202 F5)
Flanges R.F. according to EN 1092-2 PN10/16

