

**FLANGED PINCH VALVE
WITH DOUBLE ACTING PNEUMATIC ACTUATOR**

TECHNICAL PASSPORT

**FLANGED PINCH VALVE
WITH DOUBLE ACTING PNEUMATIC ACTUATOR**

VM3200A-03NR

APPLICATION

Flow sectioning in fluid transfer networks including abrasive, corrosive and fibrous products such as aggregates, powders, pellets, sludges suspensions.

Area of use: Industrial installation, water purification networks, sugar mills, mines, paper mills, pneumatic handling system, under silo, cement plant, pigment and aggregate processing sectors, ceramic, glass and plastic industry, etc.



-Fluids : all types of particularly abrasive and corrosive fluids, discharges.

GENERAL CHARACTERISTICS

Range : from DN20 to DN200.

free passage of products, no contact with the body.

Low pressure loss.

Simply and inexpensive maintenance

Absence of retention zone.

Guaranteed tightness in the presence of charged fluids

Operated by double acting pneumatic actuator.

Compressed air pressure : 6 - 10 bar

STANDARDS

Connection	Flange connection according to EN 1092-2 and EN 7055-2 : ISO PN10/16.
-------------------	---



The photographs and technical art works are not contractual. The specifications of the presented products are open to modifications without previous advice

Tecofi France

83 rue Marcel Mérieux - 69960 Corbas
Tél. +33 (0)4 72 79 05 79 - Fax. +33 (0)4 78 90 19 19
E-mail : sales@tecofi.fr - www.tecofi.fr

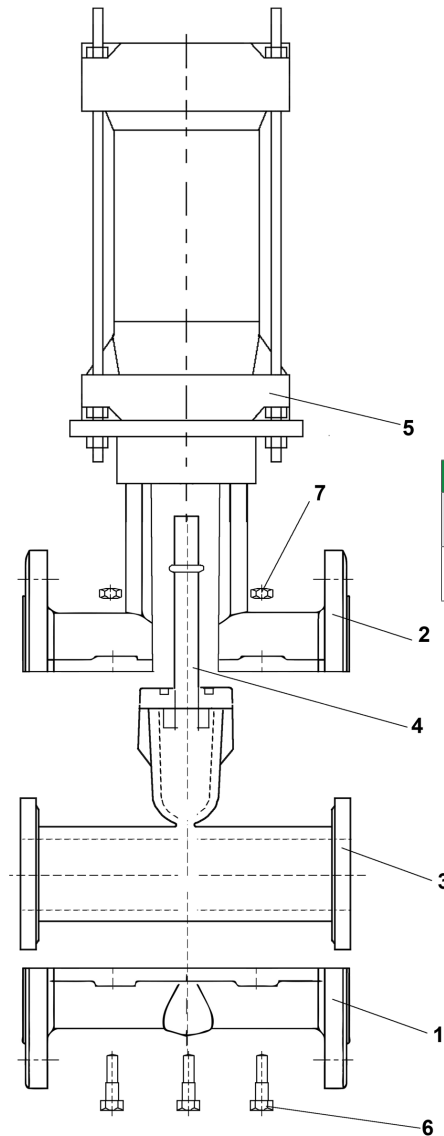


FLANGED PINCH VALVE WITH DOUBLE ACTING PNEUMATIC ACTUATOR

TECHNICAL PASSPORT

VM3200A-03NR

CONSTRUCTION



Component	Coating
Body (1)	Epoxy powder RAL6036
Bonnet (2)	Epoxy powder RAL6036

Pos.	Description	Material
1	Body	Cast iron GG 20
2	Bonnet	Cast iron GG 20
3	Sleeve*	Natural rubber
4	Stem	Steel F114
5	Pneumatic actuator	Aluminium alloy
6	Bolt	Zinc plate steel 8.8
7	Nut	Zinc plate steel 8.8

* -In option : Neoprene, NBR, EPDM, Hypalon, Butyl

Tecofi France

83 rue Marcel Mérieux - 69960 Corbas
Tél. +33 (0)4 72 79 05 79 - Fax. +33 (0)4 78 90 19 19
E-mail : sales@tecofi.fr - www.tecofi.fr

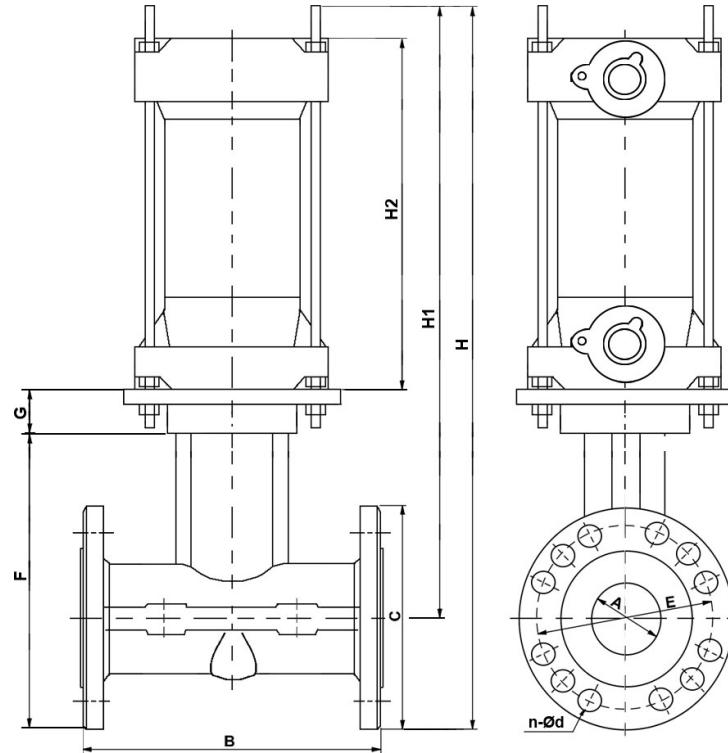


FLANGED PINCH VALVE WITH DOUBLE ACTING PNEUMATIC ACTUATOR

TECHNICAL PASSPORT

VM3200A-03NR

DIMENSIONS



DN		A	B	C	E	n-Ød	F	G	H	H1	H2	Weight (kg)
mm	inch											
20	3/4"	20	105	105	75	4-Ø14	114	36	375	275	160	4.70
25	1"	25	120	115	85	4-Ø14	140	36	352	295	160	5.70
32	1"1/4	32	140	140	100	4-Ø18	161	36	380	310	160	7.70
40	1"1/2	40	160	150	110	4-Ø18	187	48	465	390	200	12.20
50	2"	50	190	165	125	4-Ø18	210	48	492	410	200	13.20
65	2"1/2	65	235	185	145	4-Ø18	252	53	592	500	245	22.50
80	3"	80	280	200	160	8-Ø18	300	43	630	530	245	25.50
100	4"	100	340	220	180	8-Ø18	334	45	750	640	330	48.75
125	5"	125	420	250	210	8-Ø18	400	45	875	750	330	57.75
150	6"	150	490	285	240	8-Ø20	485	38	953	811	430	84.00
200	8"	200	680	340	295	8-Ø23 / 12-Ø23	587	90	1172	1002	440	134.50

WORKING CONDITIONS

Maximum working pressure : 14 bar (DN20-25); 12 bar (DN32-40); 10 bar (DN50-65);
8 bar (DN125-150); 4 bar (DN200)

Maximum working temperature : +80°C

Tecofi France

83 rue Marcel Mérieux - 69960 Corbas
Tél. +33 (0)4 72 79 05 79 - Fax. +33 (0)4 78 90 19 19
E-mail : sales@tecofi.fr - www.tecofi.fr

