

FLANGED PINCH VALVE WITH HANDWHEEL

TECHNICAL PASSPORT

FLANGED PINCH VALVE WITH HANDWHEEL

VM3200A-00NR

APPLICATION

Flow sectioning in fluid transfer networks including abrasive, corrosive and fibrous products such as aggregates, powders, pellets, sludges suspensions.

Area of use: Industrial installation, water purification networks, sugar mills, mines, paper mills, pneumatic handling system, under silo, cement plant, pigment and aggregate processing sectors, ceramic, glass and plastic industry, etc.



-Fluids : all types of particularly abrasive and corrosive fluids, discharges.



GENERAL CHARACTERISTICS

Range : from DN20 to DN200.

free passage of products, no contact with the body.

Low pressure loss.

Simply and inexpensive maintenance

Absence of retention zone.

Guaranteed tightness in the presence of charged fluids

Operated by handwheel with non rising stem.

STANDARDS

Connection	Flange connection according to EN 1092-2 and EN 7005-2 : ISO PN10/16.
-------------------	---

Tecofi France

83 rue Marcel Mérieux - 69960 Corbas
Tél. +33 (0)4 72 79 05 79 - Fax. +33 (0)4 78 90 19 19
E-mail : sales@tecofi.fr - www.tecofi.fr

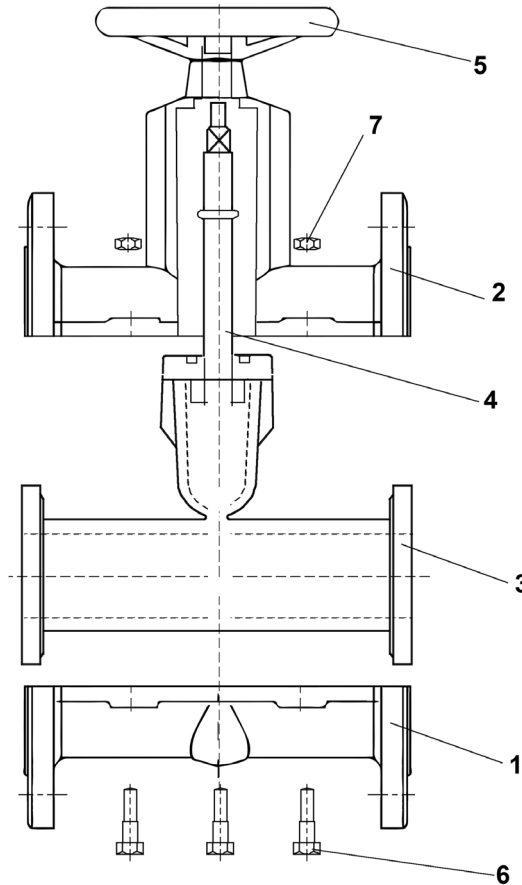


FLANGED PINCH VALVE WITH HANDWHEEL

TECHNICAL PASSPORT

VM3200A-00NR

CONSTRUCTION



Component	Coating
Body (1)	Epoxy powder RAL6036
Bonnet (2)	Epoxy powder RAL6036

Pos.	Description	Material
1	Body	Cast iron GG 20
2	Bonnet	Cast iron GG 20
3	Sleeve*	Natural rubber
4	Stem	Steel F114
5	Handwheel	Stamped steel
6	Bolt	Zinc plate steel 8.8
7	Nut	Zinc plate steel 8.8

* -In option : Neoprene, NBR, EPDM, Hypalon, Butyl

Tecofi France

83 rue Marcel Mérieux - 69960 Corbas
Tél. +33 (0)4 72 79 05 79 - Fax. +33 (0)4 78 90 19 19
E-mail : sales@tecofi.fr - www.tecofi.fr

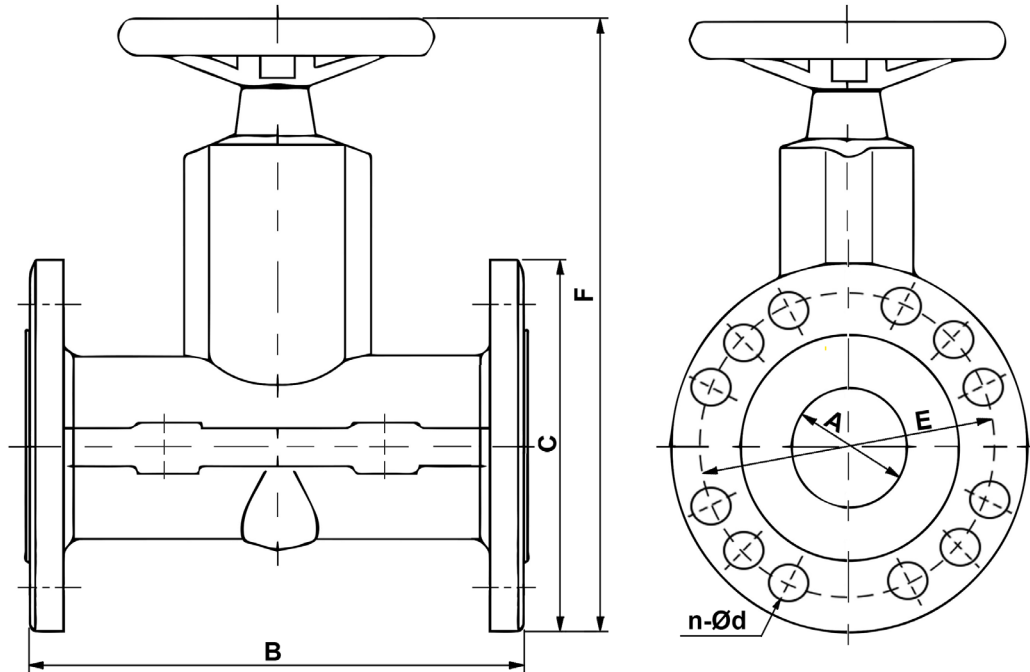


FLANGED PINCH VALVE WITH HANDWHEEL

TECHNICAL PASSPORT

VM3200A-00NR

DIMENSIONS



DN		A	B	C	E	F	n-Ød	Weight (kg)
mm	inch							
20	3/4"	20	105	105	75	145	4-Ø14	2
25	1"	25	120	115	85	175	4-Ø14	3
32	1"1/4	32	140	140	100	200	4-Ø18	5
40	1"1/2	40	160	150	110	230	4-Ø18	7
50	2"	50	190	165	125	270	4-Ø18	8
65	2"1/2	65	235	185	145	320	4-Ø18	13
80	3"	80	280	200	160	375	8-Ø18	16
100	4"	100	340	220	180	420	8-Ø18	30
125	5"	125	420	250	210	495	8-Ø18	39
150	6"	150	490	285	240	570	8-Ø20	58
200	8"	200	680	340	295	710	8-Ø23 / 12-Ø23	93

WORKING CONDITIONS

Maximum working pressure : 14 bar (DN20-25); 12 bar (DN32-40); 10 bar (DN50-65);
8 bar (DN125-150); 4 bar (DN200)

Maximum working temperature : +80°C

Tecofi France

83 rue Marcel Mérieux - 69960 Corbas
Tél. +33 (0)4 72 79 05 79 - Fax. +33 (0)4 78 90 19 19
E-mail : sales@tecofi.fr - www.tecofi.fr

