

MINING KNIFE GATE VALVE DUCTILE IRON BODY

TECHNICAL PASSPORT

MINING KNIFE GATE VALVE WITH GEAR BOX DUCTILE IRON BODY - WAFER TYPE PN10

VGP4400-08NR

APPLICATION

The TECOFI mining knife gate valve is intended for use in mining applications and for the transfer of loaded products in various industrial sectors.



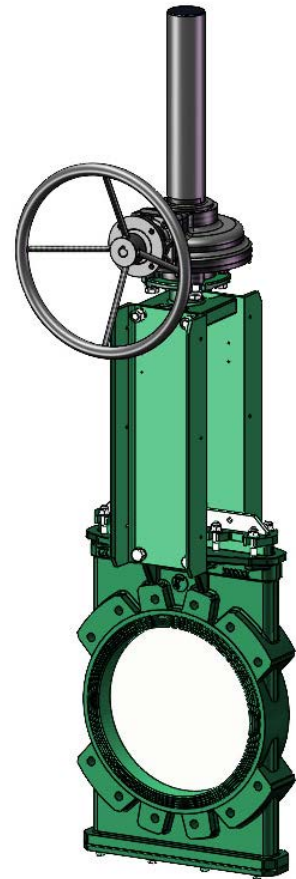
Fluids : water containing stones, waste water, sludge, abrasive fluids, etc.

GENERAL CHARACTERISTICS

Range: from DN200 to DN600.

ON-OFF valve with rising stem. One-piece molded body.

- Two-way sealing.
- Mounting between ISO PN10 flanges.
- Elastomer sleeve made of two parts, each with a core metal to reinforce the structure.
- Parts of the sleeve joining perfectly in the open position to form a tube without retention zone.
- Full bore and low pressure losses.
- Complete absence of contact of the fluid with the metal parts of the valve.
- perfect positioning of the gate between the two half-sleeves at the end of closing.
- Guiding of the gate in the body with little clearance.
- Polished gate faces as standard, machined gate extremity.
- Excellent penetration of the gate into the product ensuring operation without risk of blockage during closing.
- Very resistant ductile iron gland packing, avoiding any risk of breakage..
- Support plates in profiled and preformed sheet metal for mounting accessories or kits.
- Removable bottom cover giving access to the lower internal parts of the valve.



STANDARDS

Design	Manufacture according to the requirements of the European directive n° 2014/68/UE «Equipment under pressure» : modulate H.
Face to face	Face to face dimension according to TECOFI standard
Connection	Mounting between flanges in accordance with EN1092-2 and DIN 2501 : ISO PN10
Tests	Pressure test according to standards EN12266-1, DIN 3230 and ISO 5208.

Tecofi France

83 rue Marcel Mérieux - 69960 Corbas
Tél. +33 (0)4 72 79 05 79 - Fax. +33 (0)4 78 90 19 19
E-mail : sales@tecofi.fr - www.tecofi.fr



MINING KNIFE GATE VALVE DUCTILE IRON BODY

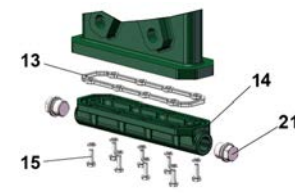
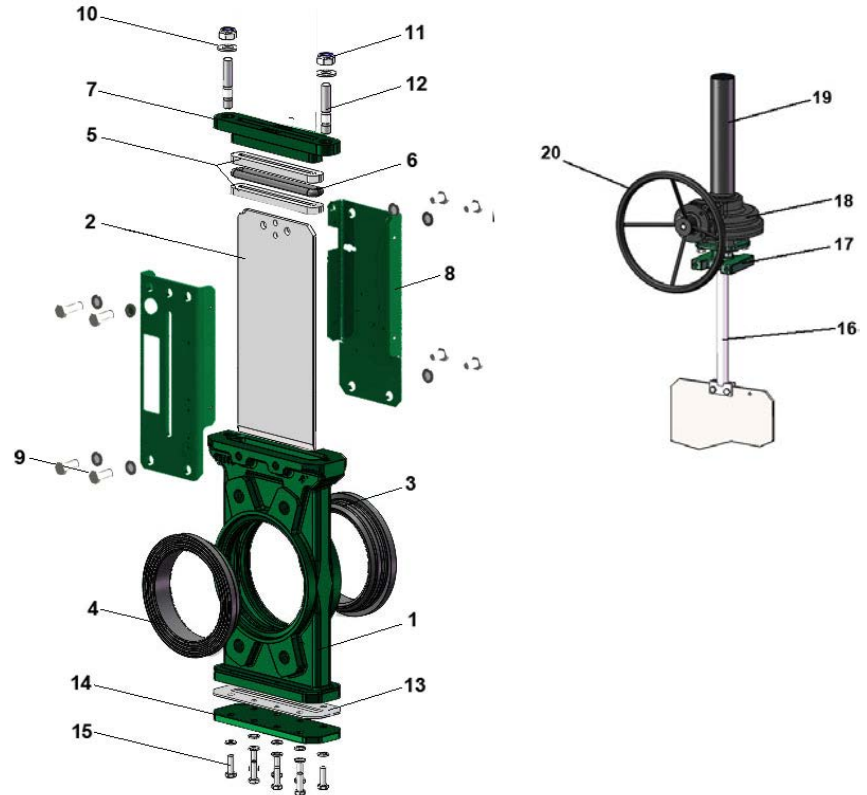
TECHNICAL PASSPORT

VGP4400-08NR

CONSTRUCTION

The valves are coated with epoxy paint to protect them against corrosion

Component	Coating
Body (1)	Epoxy powder RAL 6005 150 microns
Support plate (8)	Epoxy liquid RAL 6005 70 microns
Gland packing PE (7)	
Gear box (18)	
Protection tube (19)	Epoxy liquid RAL 9005 70 microns
Handwheel (20)	



Valve bottom in option

Pos.	Q-ty	Description	Material	Equivalences		
				DIN	ASTM	BS
1	1	Body	Ductile iron EN-GJS-500-7	GGG50	A536 70-50-05	1563 EN-JS1050
2	1	Gate	Stainless steel X5CrNi 18-10	X5CrNi 18 10	A 182 AISI 304	1449-2304 S15
3	1	Half-sleeve	Natural rubber			
4	1	Half-sleeve	Natural rubber			
5	1	Packing	PTFE			
6	1	O ring	NBR			NBR
7	1	Gland packing	Ductile iron EN-GJS-400-15	GGG40	A536 65-45-12	1563 EN-JS1030
8	2	Support plate	Steel			
9	8	Screw	Stainless steel A2-70			
10	8	Washer	Stainless steel A2-70			
11	8	Nut	Stainless steel A2-70			
12	2	Threaded rod	Stainless steel A2-70			
13	1	Bottom gasket	PTFE			
14	1	Bottom cover	Steel			
15	8	Screw	Stainless steel A2-70			
16	1	Stem	Stainless steel 13% Cr	X12Cr13	AISI 410	
17	1	Mounting plate	Ductile iron EN-GJS-500-7	GGG50	A536 70-50-05	1563 EN-JS1050
18	1	Gear box				
19	1	Protection tube	Steel A45			
20	1	Handwheel	Cast iron EN-GJL-250	GG25	A48 class 40B	1452 Grade 250
21	2	Blowing screw	Stainless steel A2-70			

Tecofi France

83 rue Marcel Mérieux - 69960 Corbas
Tél. +33 (0)4 72 79 05 79 - Fax. +33 (0)4 78 90 19 19
E-mail : sales@tecofi.fr - www.tecofi.fr

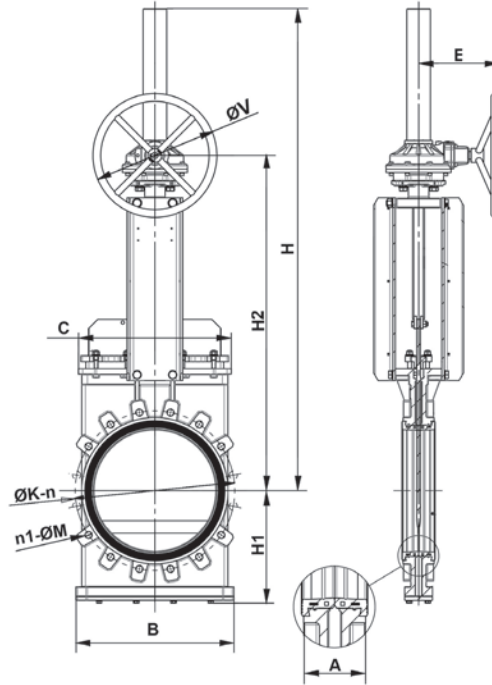


MINING KNIFE GATE VALVE DUCTILE IRON BODY

TECHNICAL PASSPORT

VGP4400-08NR

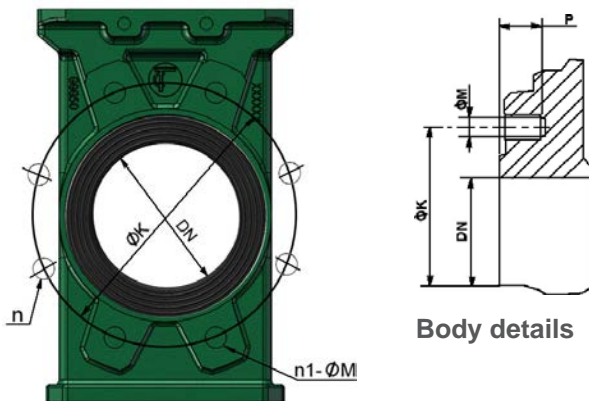
DIMENSIONS



DN		A	B	C	E	F	H	H1	H2	n1-ØM	ØK	n	ØV	Weight (kg)
mm	inch													
200	8"	60	275	304	234	G1/2"	913	211	671	4xM20	295	8	300	60
250	10"	70	328	344	234	G1/2"	1071	249	779	8xM20	350	12	300	75
300	12"	70	382	380	234	G3/4"	1216	293	874	8xM20	400	12	300	97
350	14"	96	442	450	259	G3/4"	1422	323	973	12xM20	460	16	400	152
400	16"	100	508	514	259	G1"	1580	363	1081	12xM24	515	16	400	178
450	18"	106	548	564	259	G1"	1718	394	1169	16xM24	565	20	400	226
500	20"	110	608	613	338	G1 1/4"	1945	436	1336	16xM24	620	20	600	268
600	24"	110	718	726	338	G1 1/4"	2180	488	1506	16xM27	725	20	600	377

Face to face dimension according to TECOFI standard

MOUNTING DIMENSIONS



Body details

DN		Maximum pressure (bar)	n	n1-ØM	P	ØK
mm	inch					
200	8"	10	8	4XM20	12	295
250	10"	10	12	8XM20	12	350
300	12"	10	12	8XM20	19	400
350	14"	10	16	10XM20	23	460
400	16"	10	16	10XM24	23	515
450	18"	6	20	14XM24	25	565
500	20"	6	20	14XM24	26	620
600	24"	6	20	14XM27	26	725

n- total number of holes
n1- number of tapped holes

Tecofi France

83 rue Marcel Mérieux - 69960 Corbas
Tél. +33 (0)4 72 79 05 79 - Fax. +33 (0)4 78 90 19 19
E-mail : sales@tecofi.fr - www.tecofi.fr

ISO 9001
ISO 14001
BUREAU VERITAS
Certification



MINING KNIFE GATE VALVE DUCTILE IRON BODY

TECHNICAL PASSPORT

VGP4400-08NR

WORKING CONDITIONS

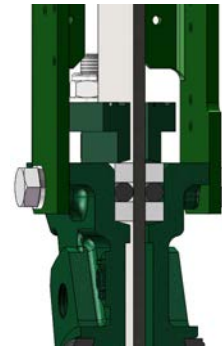
Maximum working pressure : 10 bar

Maximum working temperature : -20°C / +80°C

Upstream/downstream tightness



Packing tightness



PTFE/elastomer

The photographs and technical art works are not contractual. The specifications of the presented products are open to modifications without previous advice

Tecofi France

83 rue Marcel Mérieux - 69960 Corbas
Tél. +33 (0)4 72 79 05 79 - Fax. +33 (0)4 78 90 19 19
E-mail : sales@tecofi.fr - www.tecofi.fr

ISO 9001
ISO 14001
BUREAU VERITAS
Certification

