

MINING KNIFE GATE VALVE DUCTILE IRON BODY

TECHNICAL PASSPORT

MINING KNIFE GATE VALVE WITH DOUBLE ACTING PNEUMATIC ACTUATOR DUCTILE IRON BODY - WAFER TYPE PN10

VGP4400-03NR

APPLICATION

The TECOFI mining knife gate valve is intended for use in mining applications and for the transfer of loaded products in various industrial sectors.



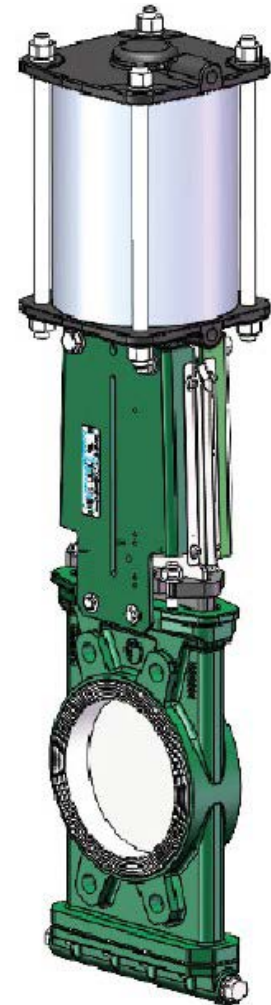
Fluids : water containing stones, waste water, sludge, abrasive fluids, etc.

GENERAL CHARACTERISTICS

Range: from DN150 to DN300.

ON-OFF valve with rising stem. One-piece molded body.

- Two-way sealing.
- Mounting between ISO PN10 flanges.
- Elastomer sleeve made of two parts, each with a core metal to reinforce the structure.
- Parts of the sleeve joining perfectly in the open position to form a tube without retention zone.
- Full bore and low pressure losses.
- Complete absence of contact of the fluid with the metal parts of the valve.
- perfect positioning of the gate between the two half-sleeves at the end of closing.
- Guiding of the gate in the body with little clearance.
- Polished gate faces as standard, machined gate extremity.
- Excellent penetration of the gate into the product ensuring operation without risk of blockage during closing.
- Very resistant ductile iron gland packing, avoiding any risk of breakage..
- Support plates in profiled and preformed sheet metal for mounting accessories or kits.
- Removable bottom cover giving access to the lower internal parts of the valve.



STANDARDS

Design	Manufacture according to the requirements of the European directive n° 2014/68/UE «Equipment under pressure» : modulate H.
Face to face	Face to face dimension according to TECOFI standard
Connection	Mounting between flanges in accordance with EN1092-2 and DIN 2501 : ISO PN10
Tests	Pressure test according to standards EN12266-1, DIN 3230 and ISO 5208.

Tecofi France

83 rue Marcel Mérieux - 69960 Corbas
Tél. +33 (0)4 72 79 05 79 - Fax. +33 (0)4 78 90 19 19
E-mail : sales@tecofi.fr - www.tecofi.fr



MINING KNIFE GATE VALVE DUCTILE IRON BODY

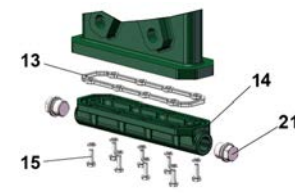
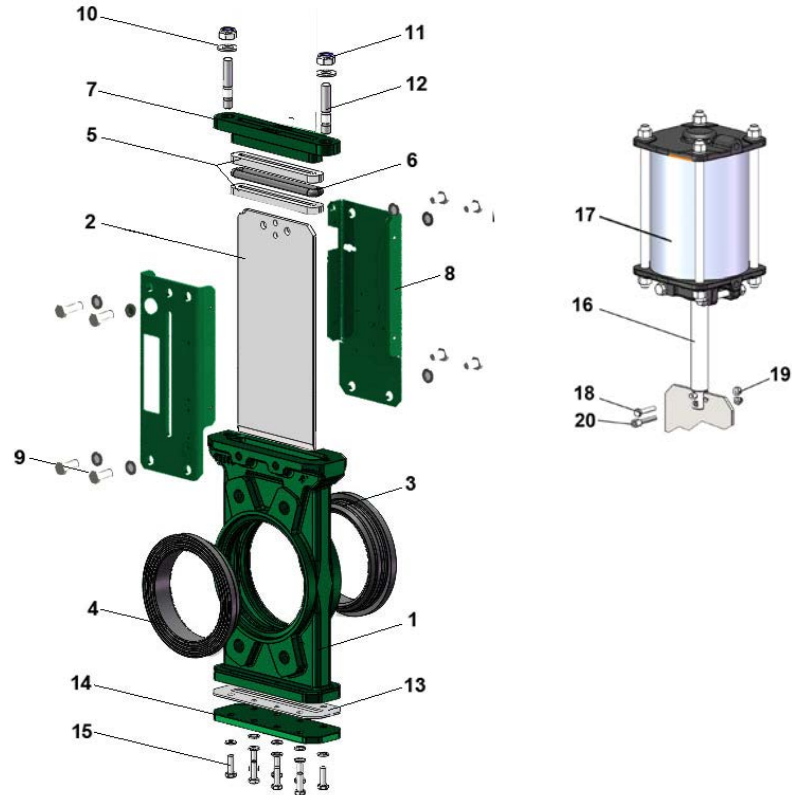
TECHNICAL PASSPORT

VGP4400-03NR

CONSTRUCTION

The valves are coated with epoxy paint to protect them against corrosion

Component	Coating
Body (1)	Epoxy powder RAL 6005 150 microns
Support plate (8)	Epoxy liquid RAL 6005 70 microns
Gland packing PE (7)	



Valve bottom in option

Pos.	Q-ty	Description	Material	Equivalences		
				DIN	ASTM	BS
1	1	Body	Ductile iron EN-GJS-500-7	GGG50	A536 70-50-05	1563 EN-JS1050
2	1	Gate	Stainless steel X5CrNi 18-10	X5CrNi 18 10	A 182 AISI 304	1449-2304 S15
3	1	Half-sleeve	Natural rubber			
4	1	Half-sleeve	Natural rubber			
5	1	Packing	PTFE			
6	1	O ring	NBR			NBR
7	1	Gland packing	Ductile iron EN-GJS-400-15	GGG40	A536 65-45-12	1563 EN-JS1030
8	2	Support plate	Steel			
9	8	Screw	Stainless steel A2-70			
10	8	Washer	Stainless steel A2-70			
11	8	Nut	Stainless steel A2-70			
12	2	Threaded rod	Stainless steel A2-70			
13	1	Bottom gasket	PTFE			
14	1	Bottom cover	Steel			
15	8	Screw	Stainless steel A2-70			
16	1	Stem	Stainless steel 13% Cr	X12Cr13	AISI 410	
17	1	Pneumatic actuator				
18	1	Screw				
19	1	Nut	Stainless steel A2-70			
20	1	Position indication screw	Stainless steel X5CrNi 18-10	X5CrNi 18 10	A 182 AISI 304	1449-2304 S15
21	2	Blowing screm	Stainless steel A2-70			

Tecofi France

83 rue Marcel Mérieux - 69960 Corbas
Tél. +33 (0)4 72 79 05 79 - Fax. +33 (0)4 78 90 19 19
E-mail : sales@tecofi.fr - www.tecofi.fr

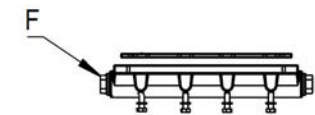
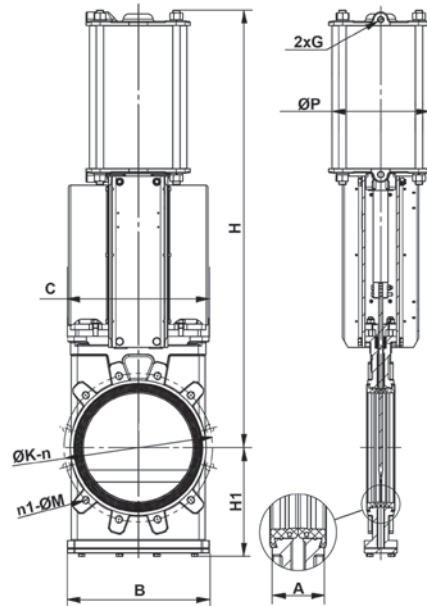


MINING KNIFE GATE VALVE DUCTILE IRON BODY

TECHNICAL PASSPORT

VGP4400-03NR

DIMENSIONS

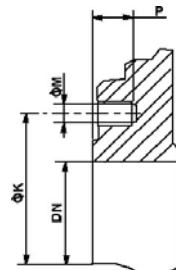
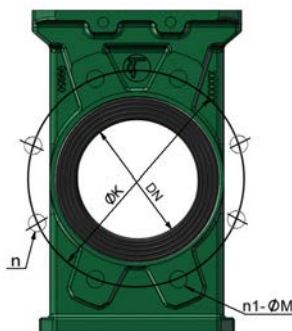


Bottom of valve in option

DN		A	B	C	F	H	H1	n1-Ø M	ØK	n	G	Ø P	Poids (kg)
mm	inch												
80	3"	50	160	154	G3/8"	484	131	4xM16	160	8	G1/4"	100	13
100	4"	50	162	177	G3/8"	560	143	4xM16	180	8	G1/4"	125	20
125	5"	50	194	198	G1/2"	625	161	4xM16	210	8	G1/4"	160	29.5
150	6"	60	220	220	G1/2"	706	174	4xM20	240	8	G1/4"	160	34
200	8"	60	275	304	G1/2"	880	211	4xM20	295	8	G1/4"	200	60
250	10"	70	328	344	G1/2"	1033	249	8xM20	350	12	G3/8"	250	92
300	12"	70	382	380	G3/4"	1177	293	8xM20	400	12	G3/8"	250	110
350	14"	96	442	450	G3/4"	1352	323	12xM20	460	16	G1/2"	320	185
400	16"	100	508	514	G1"	1527	363	12xM24	515	16	G1/2"	320	210
450	18"	106	548	564	G1"	1660	394	16xM24	565	20	G1/2"	320	265
500	20"	110	608	613	G1"1/4	1853	436	16xM24	620	20	G3/4"	400	393
600	24"	110	718	726	G1"1/4	2165	488	16xM27	725	20	G3/4"	400	508

Face to face dimension according to TECOFI standard

MOUNTING DIMENSIONS



Body details

DN		Maximum pressure (bar)	n	n1-ØM	P	ØK
mm	inch					
80	3"	10	8	4xM16	9	160
100	4"	10	8	4xM16	9	180
125	5"	10	8	4xM16	9	210
150	6"	10	8	4xM20	10	240
200	8"	10	8	4xM20	12	295
250	10"	10	12	8xM20	12	350
300	12"	10	12	8xM20	19	400
350	14"	10	16	10xM20	23	460
400	16"	10	16	10xM24	23	515
450	18"	6	16	14xM24	25	565
500	20"	6	20	14xM24	26	620
600	24"	6	20	14xM27	26	725

n- total number of holes

n1- number of tapped holes

Tecofi France

83 rue Marcel Mérieux - 69960 Corbas

Tél. +33 (0)4 72 79 05 79 - Fax. +33 (0)4 78 90 19 19

E-mail : sales@tecofi.fr - www.tecofi.fr

ISO 9001
ISO 14001
BUREAU VERITAS
Certification



MINING KNIFE GATE VALVE DUCTILE IRON BODY

TECHNICAL PASSPORT

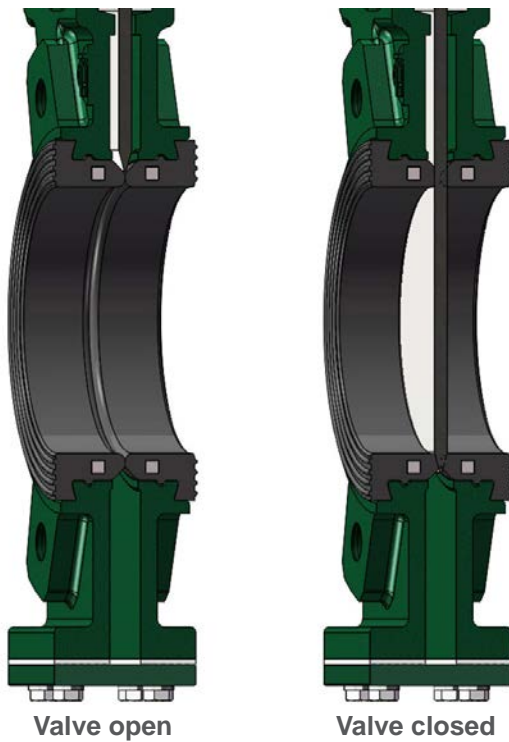
VGP4400-03NR

WORKING CONDITIONS

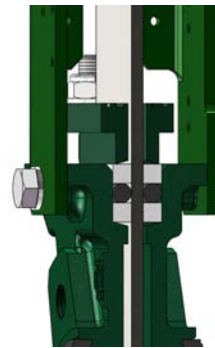
Maximum working pressure : 10 bar (DN80-400)
6 bar (DN450-600)

Maximum working temperature : -20°C / +80°C

Upstream/downstream tightness



Packing tightness



PTFE/elastomer

The photographs and technical art works are not contractual. The specifications of the presented products are open to modifications without previous advice

Tecofi France

83 rue Marcel Mérieux - 69960 Corbas
Tél. +33 (0)4 72 79 05 79 - Fax. +33 (0)4 78 90 19 19
E-mail : sales@tecofi.fr - www.tecofi.fr

ISO 9001
ISO 14001
BUREAU VERITAS
Certification

