

MINING KNIFE GATE VALVE DUCTILE IRON BODY

TECHNICAL PASSPORT

MINING KNIFE GATE VALVE WITH HAND WHEEL DUCTILE IRON BODY - WAFER TYPE PN10

VGP4400-00NR

APPLICATION

The TECOFI mining knife gate valve is intended for use in mining applications and for the transfer of loaded products in various industrial sectors.



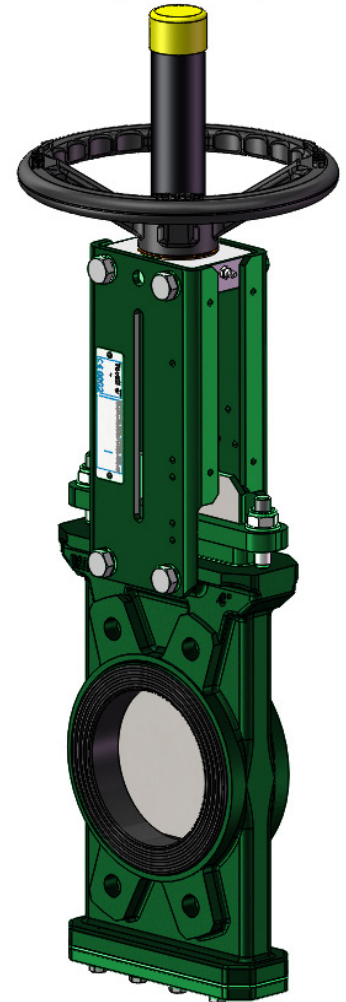
Fluids : water containing stones, waste water, sludge, abrasive fluids, etc.

GENERAL CHARACTERISTICS

Range: from DN80 to DN300.

ON-OFF valve with rising stem. One-piece molded body.

- Two-way sealing.
- Mounting between ISO PN10 flanges.
- Elastomer sleeve made of two parts, each with a core metal to reinforce the structure.
- Parts of the sleeve joining perfectly in the open position to form a tube without retention zone.
- Full bore and low pressure losses.
- Complete absence of contact of the fluid with the metal parts of the valve.
- perfect positioning of the gate between the two half-sleeves at the end of closing.
- Guiding of the gate in the body with little clearance.
- Polished gate faces as standard, machined gate extremity.
- Excellent penetration of the gate into the product ensuring operation without risk of blockage during closing.
- Very resistant ductile iron gland packing, avoiding any risk of breakage..
- Support plates in profiled and preformed sheet metal for mounting accessories or kits.
- Removable bottom cover giving access to the lower internal parts of the valve.



STANDARDS

Design	Manufacture according to the requirements of the European directive n° 2014/68/UE «Equipment under pressure» : modulate H.
Face to face	Face to face dimension according to TECOFI standard
Connection	Mounting between flanges in accordance with EN1092-2 and DIN 2501 : ISO PN10
Tests	Pressure test according to standards EN12266-1, DIN 3230 and ISO 5208.

Tecofi France

83 rue Marcel Mérieux - 69960 Corbas
Tél. +33 (0)4 72 79 05 79 - Fax. +33 (0)4 78 90 19 19
E-mail : sales@tecofi.fr - www.tecofi.fr



MINING KNIFE GATE VALVE DUCTILE IRON BODY

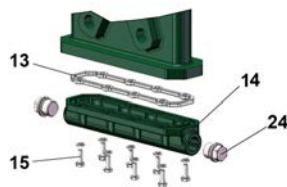
TECHNICAL PASSPORT

VGP4400-00NR

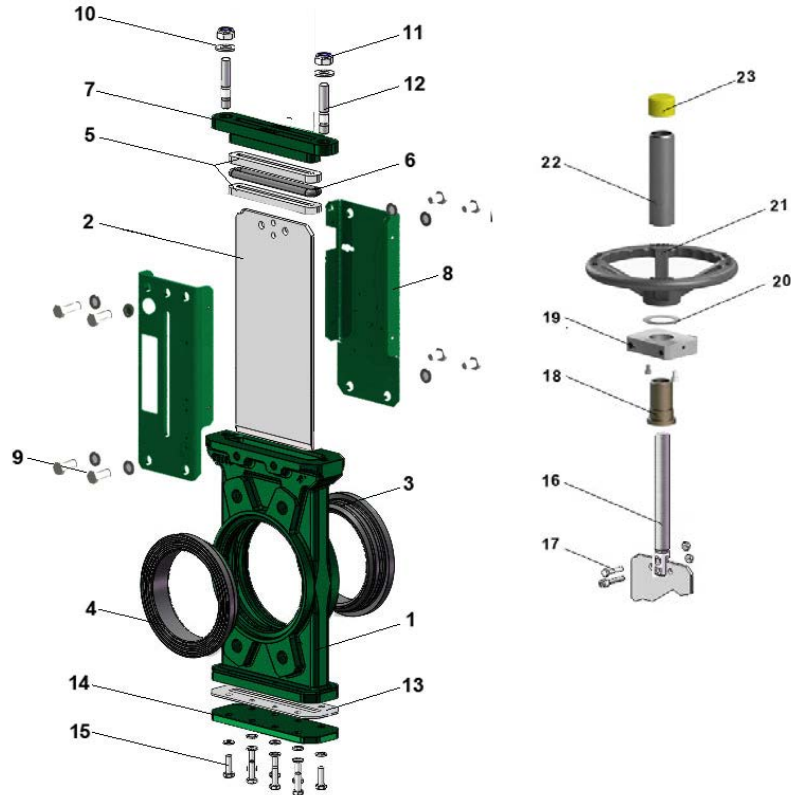
CONSTRUCTION

The valves are coated with epoxy paint to protect them against corrosion

Component	Coating
Body (1)	Epoxy powder RAL 6005 150 microns
Support plate (8)	Epoxy liquid RAL 6005 70 microns
Gland packing PE (7)	
Handwheel (23)	Epoxy liquid RAL 9005 70 microns
Protection tube (24)	



Valve bottom in option



Pos.	Q-ty	Description	Material	Equivalences		
				DIN	ASTM	BS
1	1	Body	Ductile iron EN-GJS-500-7	GGG50	A536 70-50-05	1563 EN-JS1050
2	1	Gate	Stainless steel X5CrNi 18-10	X5CrNi 18 10	A 182 AISI 304	1449-2304 S15
3	1	Half-sleeve	Natural rubber			
4	1	Half-sleeve	Natural rubber			
5	1	Packing	PTFE			
6	1	O ring	NBR			NBR
7	1	Gland packing	Ductile iron EN-GJS-400-15	GGG40	A536 65-45-12	1563 EN-JS1030
8	2	Support plate	Steel			
9	8	Screw	Stainless steel A2-70			
10	8	Washer	Stainless steel A2-70			
11	8	Nut	Stainless steel A2-70			
12	2	Threaded rod	Stainless steel A2-70			
13	1	Bottom gasket	PTFE			
14	1	Bottom cover	Steel			
15	8	Screw	Stainless steel A2-70			
16	1	Stem	Stainless steel 13% Cr	X12Cr13	AISI 410	
17	2	Screw	Stainless steel A2-70			
18	1	Nut	Bronze	CuSn5Zn8Pb5-C		
19	1	Screw	Stainless steel A2-70			
20	1	Support washer	Bronze	CuSn5Zn8Pb5-C		
21	1	Handwheel	Cast iron EN-GJL-250	GG25	A48 class 40B	1452 Grade 250
22	1	Protection tube	Steel A45			
23	1	Plug	Polyurethane			
24	2	Blowing screw	Stainless steel A2-70			

Tecofi France

83 rue Marcel Mérieux - 69960 Corbas
Tél. +33 (0)4 72 79 05 79 - Fax. +33 (0)4 78 90 19 19
E-mail : sales@tecofi.fr - www.tecofi.fr

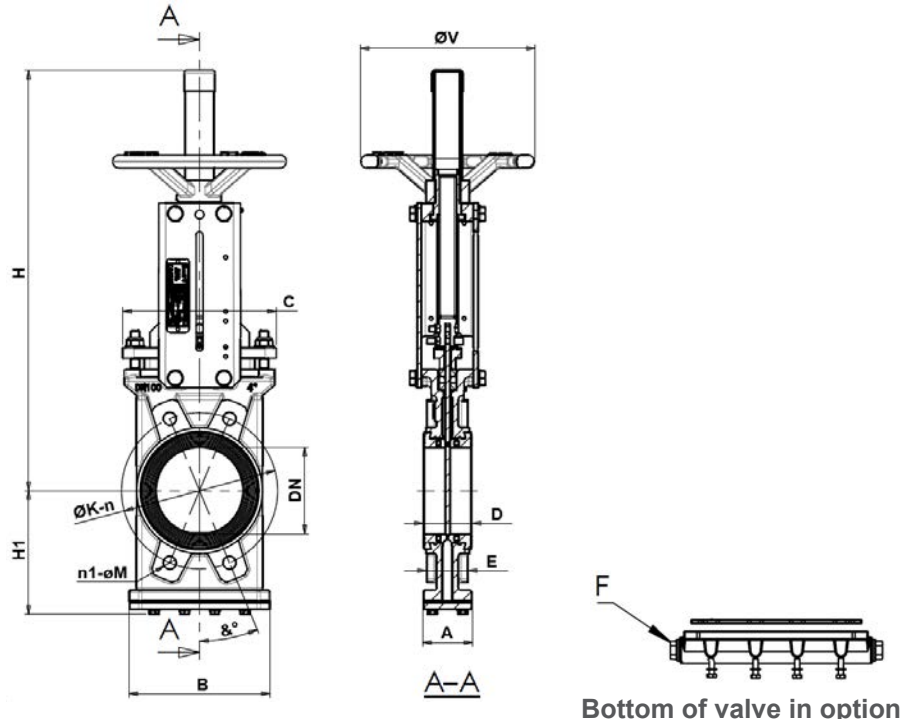


MINING KNIFE GATE VALVE DUCTILE IRON BODY

TECHNICAL PASSPORT

VGP4400-00NR

DIMENSIONS

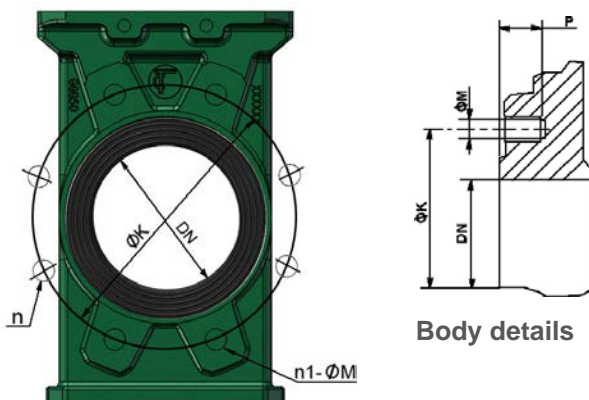


Bottom of valve in option

DN		A	B	C	D	E	F	°	H	H1	n1-Ø M	ØK	n	Ø V	Weight (kg)
mm	inch														
80	3"	50	160	154	50	50	G3/8"	22.5	427	131	4xM16	160	8	200	12.5
100	4"	50	162	177	50	50	G3/8"	22.5	486	143	4xM16	180	8	200	14
125	5"	50	194	198	50	50	G1/2"	22.5	565	161	4xM16	210	8	150	20
150	6"	60	220	220	60	60	G1/2"	22.5	636	174	4xM20	240	8	250	24
200	8"	60	275	304	60	60	G1/2"	22.5	803	211	4xM20	295	8	310	45
250	10"	70	328	344	70	70	G1/2"	15	957	249	8xM20	350	12	310	61
300	12"	70	382	380	70	70	G3/4"	15	1116	293	8xM20	400	12	400	85

Face to face dimension according to TECOFI standard

MOUNTING DIMENSIONS



Body details

DN		Maximum pressure (bar)	n	n1-ØM	P	ØK
mm	inch					
80	3"	10	8	4xM16	9	160
100	4"	10	8	4xM16	9	180
125	5"	10	8	4xM16	9	210
150	6"	10	8	4xM20	10	240
200	8"	10	8	4xM20	12	295
250	10"	10	12	8xM20	12	350
300	12"	10	12	8xM20	19	400

n- total number of holes
n1- number of tapped holes

Tecofi France

83 rue Marcel Mérieux - 69960 Corbas

Tél. +33 (0)4 72 79 05 79 - Fax. +33 (0)4 78 90 19 19

E-mail : sales@tecofi.fr - www.tecofi.fr

ISO 9001
ISO 14001
BUREAU VERITAS
Certification



MINING KNIFE GATE VALVE DUCTILE IRON BODY

TECHNICAL PASSPORT

VGP4400-00NR

WORKING CONDITIONS

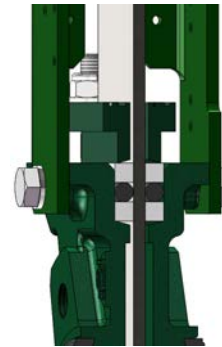
Maximum working pressure : 10 bar

Maximum working temperature : -20°C / +80°C

Upstream/downstream tightness



Packing tightness



PTFE/elastomer

The photographs and technical art works are not contractual. The specifications of the presented products are open to modifications without previous advice

Tecofi France

83 rue Marcel Mérieux - 69960 Corbas
Tél. +33 (0)4 72 79 05 79 - Fax. +33 (0)4 78 90 19 19
E-mail : sales@tecofi.fr - www.tecofi.fr

ISO 9001
ISO 14001
BUREAU VERITAS
Certification

