

# FLANGED PN10/16 DOUBLE CHAMBER AIR VALVE

## TECHNICAL PASSPORT

### DOUBLE CHAMBER / TRIPLE FUNCTION AIR RELEASE FLANGED PN10/16

PVT4240A

#### APPLICATION

The double chamber /triple function air valve is intended for use in clear water supply systems.

It provides the following functions:

1. Disposal of large volumes of air during fill of the pipes of system.
2. The supply of large amounts of air to the system closure during purging of the piping.
3. Rejection of pressurized air pockets during operation.



Fluids : clear water, potable water.



#### GENERAL CHARACTERISTICS

Range : from DN40 to DN300.

Body consisting of a chambers containing floats.

Large discharge and intake capacity.

Body coating : epoxy powder paint bonded by electrostatic fusion

(RAL 5015, 250 microns).

#### STANDARDS

Connection	Flange assembling PN10/16 according to EN1092-2, ISO 7005/2 , BS4504.
------------	---

#### PRODUCT APPROVALS



#### Tecofi France

83 rue Marcel Mérieux - 69960 Corbas  
Tél. +33 (0)4 72 79 05 79 - Fax. +33 (0)4 78 90 19 19  
E-mail : sales@tecofi.fr - [www.tecofi.fr](http://www.tecofi.fr)

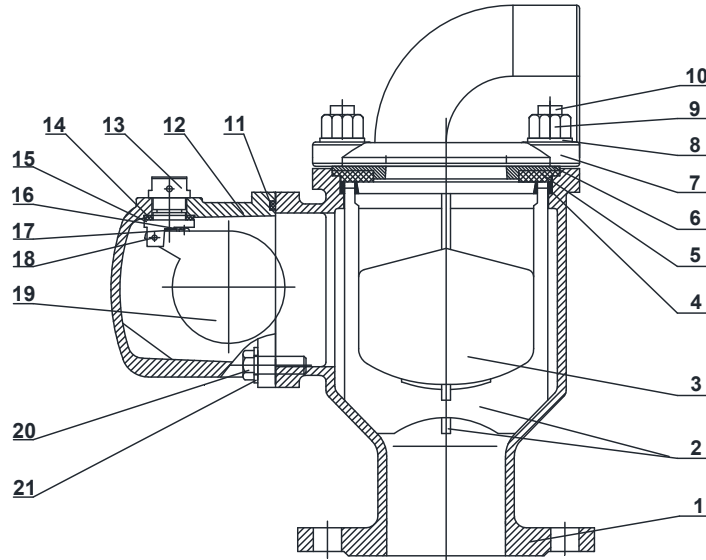


## FLANGED PN10/16 DOUBLE CHAMBER AIR VALVE

### TECHNICAL PASSPORT

PVT4240A

#### CONSTRUCTION



Pos.	Description	Material		
1	Body	Ductile iron	GGG50	
2	Float guide	ABS	ISO 7245 PA757	
3	Float	ABS	ISO 7245 PA757	
4	Support	ABS	ISO 7245 PA757	
5	Seat ring	EPDM		
6	Seat support	ABS	ISO 7245 PA757	
7	Cover	Ductile iron	GGG50	
8	Washer	Stainless steel 316	EN ISO7089	BS4320
9	Nut	Stainless steel 316	EN ISO4032	BS3692
10	Hexagonal bolt	Stainless steel 316	EN ISO4017	BS3692
11	O-ring	EPDM		
12	Side body	Ductile iron	GGG50	
13	Cap	Stainless steel 316	EN 10088-3:2005	
14	Gasket	EPDM		
15	Bracket	Nylon		
16	Adjusting screw	Stainless steel 316	EN ISO15481	BS4174
17	Seat	EPDM		
18	Hinge pin	Stainless steel 316	EN ISO1234	BS1574
19	Side float	ABS	ISO 7245 PA757	
20	Hexagonal bolt	Stainless steel 316	EN ISO4017	BS3692
21	Washer	Stainless steel 316	EN ISO7089	BS4320

#### Tecofi France

83 rue Marcel Mérieux - 69960 Corbas  
Tél. +33 (0)4 72 79 05 79 - Fax. +33 (0)4 78 90 19 19  
E-mail : sales@tecofi.fr - [www.tecofi.fr](http://www.tecofi.fr)

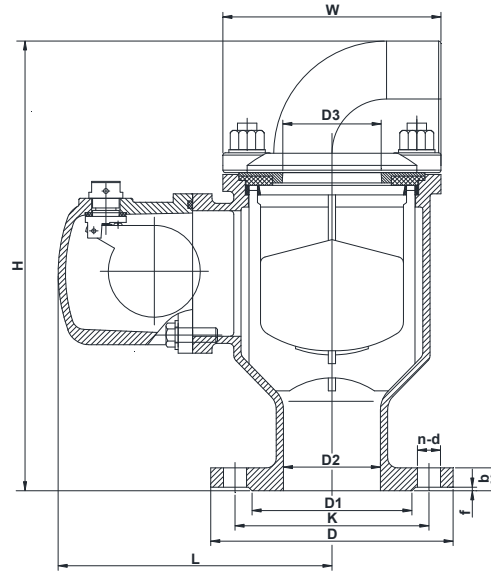


## FLANGED PN10/16 DOUBLE CHAMBER AIR VALVE

### TECHNICAL PASSPORT

PVT4240A

#### DIMENSIONS



DN		L	H	D	K		D1	D2	D3	n-d		b	f	W	Weight (kg)
mm	inch				PN10	PN16				PN10	PN16				
40	1 1/2"	232	373	150	110	84	40	80	4-19		19	3	180	20	
50	2"	232	373	165	125	99	50	80	4-19		19	3	180	20	
40-65	14"	232	373	185	110-145	118	50	80	4-19		19	3	180	21.5	
65	2 1/2"	232	373	185	145	118	65	80	4-19		19	3	180	21.5	
80	3"	232	373	200	160	132	80	80	8-19		19	3	180	22	
100	4"	238	458	220	180	156	100	113	8-19		19	3	226	32.2	
150	6"	238	458	285	240	211	150	113	8-23		19	3	226	34.2	
200	8"	238	458	340	295		266	150	113	8-23	12-23	20	3	226	38
250	10"	238	458	405	350	355	319	150	113	12-23	12-28	22	3	226	43.9
300	12"	238	458	460	400	410	370	150	113	12-23	12-28	24.5	4	226	52.9

#### WORKING CONDITIONS

Maximum working pressure : 16 bar  
Maximum working temperature : -10°C / 80°C

#### Tecofi France

83 rue Marcel Mérieux - 69960 Corbas  
Tél. +33 (0)4 72 79 05 79 - Fax. +33 (0)4 78 90 19 19  
E-mail : sales@tecofi.fr - [www.tecofi.fr](http://www.tecofi.fr)

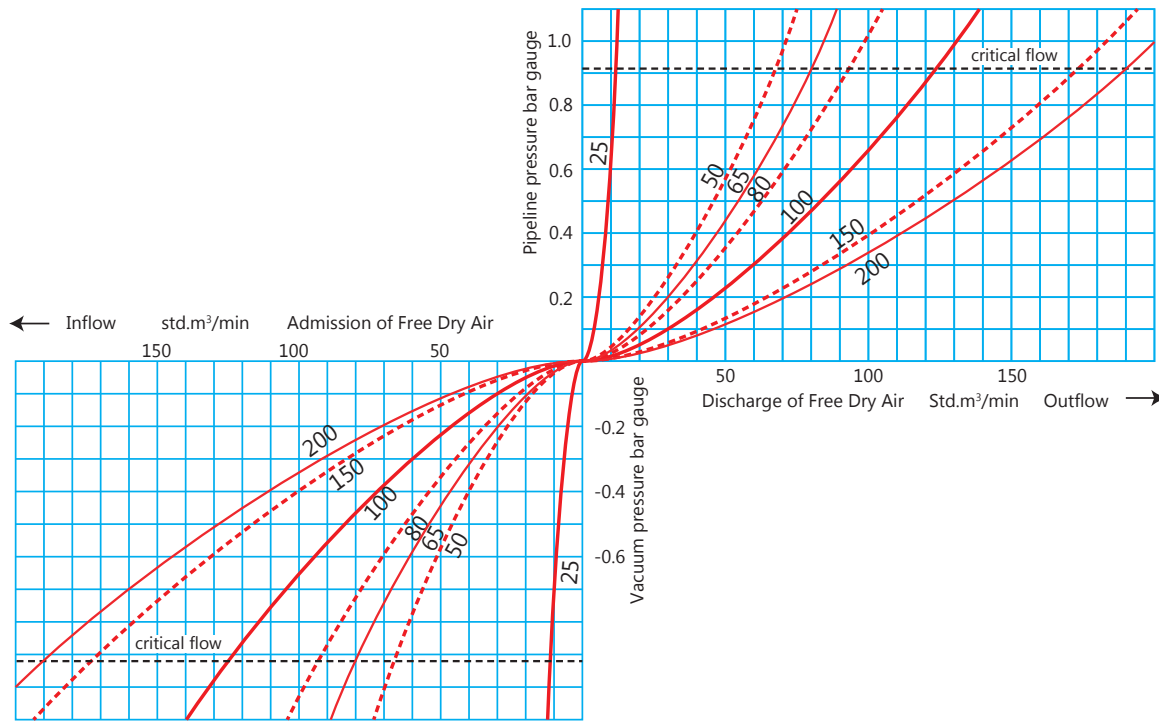


## FLANGED PN10/16 DOUBLE CHAMBER AIR VALVE

### TECHNICAL PASSPORT

PVT4240A

#### AIR INFLOW AND OUTFLOW



Differential pressure (bar)	Discharge flow of free dry air, (m3/h)							Admission flow of free dry air, (m3/h)						
	FB	FB	FB	FB	FB	FB	RB	FB	FB	FB	FB	FB	FB	RB
0.5	420	630	720	900	1140	1680	1770	420	630	720	900	1140	1680	1770
0.1	720	960	1140	1320	1800	2520	2700	720	960	1140	1320	1800	2520	2700
0.2	1170	1500	1800	2100	2760	3900	4260	1170	1500	1800	2100	2760	3900	4260
0.3	1530	1950	2310	2700	3600	5040	5550	1530	1950	2310	2700	3600	5040	5550
0.4	1890	2400	2790	3270	4320	6090	6690	1890	2400	2790	3270	4320	6090	6690
0.5	2220	2730	3270	3750	5010	6990	7800	2220	2730	3270	3750	5010	6990	7800
0.6	2550	3120	3690	4230	5670	7890	8730	2550	3120	3690	4230	5670	7890	8730
0.7	2820	3390	4050	4680	6320	8430	9690	2820	3390	4050	4680	6270	8430	9690
0.8	3220	3750	4440	5100	6840	9570	10500	3120	3750	4440	5100	6840	9570	10500
0.9	3300	3990	4740	5550	7350	10320	11280	3300	3990	4740	5550	7350	10320	11280
1.0	3480	4290	5070	5910	7890	10980	12000	3480	4290	5070	5910	7890	10980	12000

FB - (full bore)

RB - (reduced bore)

**Tecofi France**

83 rue Marcel Mérieux - 69960 Corbas

Tél. +33 (0)4 72 79 05 79 - Fax. +33 (0)4 78 90 19 19

E-mail : sales@tecofi.fr - [www.tecofi.fr](http://www.tecofi.fr)

