

AIR RELEASE VALVE SINGLE CHAMBER SINGLE FUNCTION

TECHNICAL PASSPORT

AIR RELEASE VALVE SINGLE CHAMBER SINGLE FUNCTION PN10/16/25

PVS4251A

APPLICATION

TECOFI air release valves are used to evacuate or purge air pockets located in pipes to improve and secure fluid circulation



Fluids: water, waste water, compatible liquids.

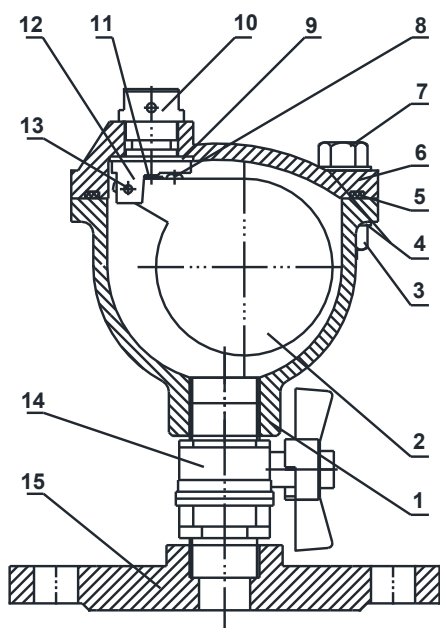
GENERAL CHARACTERISTICS

Range: from DN25 to DN100.

- Powder epoxy coated body RAL5015, 250µ thickness DIN 30677.
- Flange connection PN25 according to EN 1092-2.
- With ball valve (1")



CONSTRUCTION



Pos.	Description	Material		
1	Body	Ductile iron	GGG50	
2	Float	ABS		
3	Nut	Carbon steel	EN ISO4032	BS3692
4	Washer	Carbon steel	EN ISO7089	BS4320
5	O-ring	EPDM	EN681-1	BS2494
6	Bonnet	Ductile iron	GGG50	
7	Bolt	Carbon steel	EN ISO4017	BS3692
8	Adjustable screw	Stainless steel	EN ISO15481	BS4174
9	Gasket	EPDM	EN681-1	BS2494
10	Cap	Nylon/Brass		
11	Seat	EPDM	EN681-1	BS2494
12	Bracket	Nylon		
13	Hinge pin	Stainless steel	EN ISO1234	BS1574
14	Isolation valve	Brass	EN12164	BS2874
15	Flange	Ductile iron	EN1563-GJS-450	BS2789

PRODUCT APPROVALS



Tecofi France

83 rue Marcel Mérieux - 69960 Corbas
Tél. +33 (0)4 72 79 05 79 - Fax. +33 (0)4 78 90 19 19
E-mail : sales@tecofi.fr - www.tecofi.fr



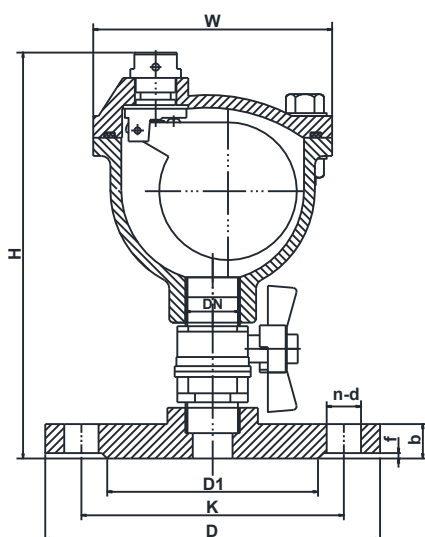
AIR RELEASE VALVE SINGLE CHAMBER SINGLE FUNCTION

TECHNICAL PASSPORT

AIR RELEASE VALVE SINGLE CHAMBER SINGLE FUNCTION PN10/16/25

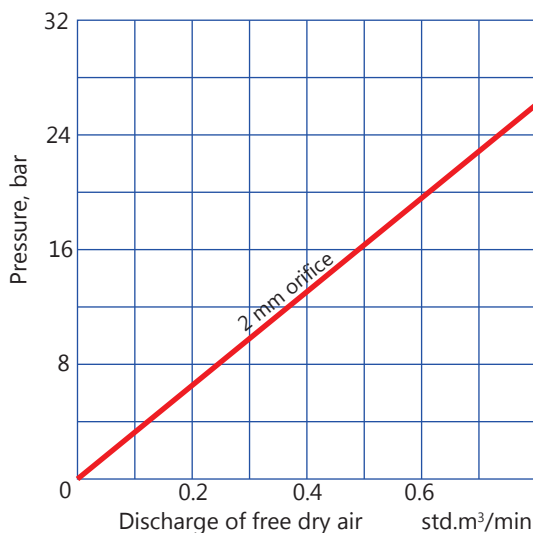
PVS4251A

DIMENSIONS



DN	W	H	D	K	D1	n-d	b	f	Weight (kg)
mm									
25	115	210	115	85	65	4-14	16	3	5.5
40	115	210	185	110	118	4-19	19	3	6.3
40/65	115	210	185	110-145	118	4-19	19	3	6.5
80	115	210	200	160	132	8-19	19	3	7.1
100	115	210	235	190	156	8-23	19	3	8.1

FLOW CAPACITY



WORKING CONDITIONS

Maximum working temperature : +80°C
Maximum working pressure : 25 bar

Tecofi France

83 rue Marcel Mérieux - 69960 Corbas
Tél. +33 (0)4 72 79 05 79 - Fax. +33 (0)4 78 90 19 19
E-mail : sales@tecofi.fr - www.tecofi.fr

