

Ref. : MAE 9000.pas

Rev. : Initial

Date : 30/09/2016

Page : 1/1

DIGITAL PRESSURE GAUGE

MAE 9000



APPLICATION

Pressure measurement for gaseous or oily fluids.

GENERAL CHARACTERISTICS

Digital pressure gauge with rotating display.
 2 lines LCD screen, 4.5 digit display, 7 segments.
 Function min/max resettable.
 Compensation and adjustment of zero-point.
 Measurement cycle: 5 per second.
 Accuracy: $\leq 0.25\%$ FSO BFSL.
 Pressure units: bar, mbar, psi, InHg, CmHg, mmHg, hPa, kPa, Mpa, mH₂O.
 Getting configurable automatic standby.
 Power: 3.6V Litium battery; 2 rooms (1/2 AA)
 Protection: IP65.



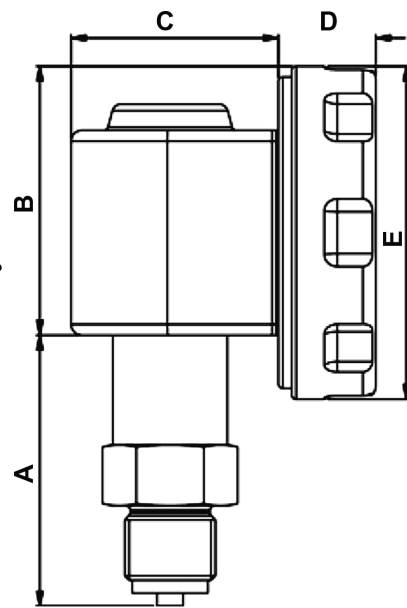
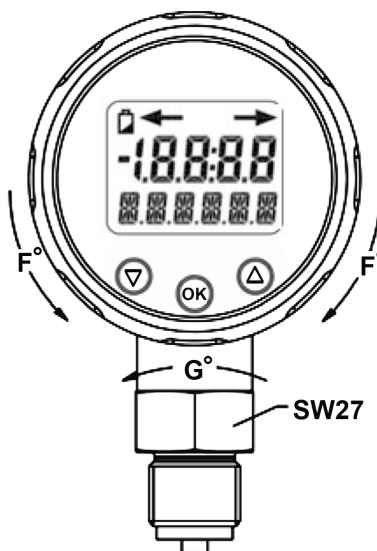
CONSTRUCTION

Joint*	FKM
Cell*	Ceramic Al ₂ O ₃ 96%
Viewing	PA 6.6 Polycarbonate
Connection*	Stainless steel 1.4404 (316L)
Housing	Stainless steel 1.4404 (316L)
Description	Material

*parts in contact with the fluid

DIMENSIONS

Connection	A	B	C	D	ØE	F°	G°	Weight (kg)
G1/2" EN 837	62.5	62	48	22.5	76.5	120°	300°	0.3
G1/4" EN 837	54.5	62	48	22.5	76.5	120°	300°	0.3
G1/4" DIN	53.5	62	48	22.5	76.5	120°	300°	0.3
1/4" NPT	54.5	62	48	22.5	76.5	120°	300°	0.3
1/2" NPT	60.5	62	48	22.5	76.5	120°	300°	0.3



CONDITIONS DE SERVICE

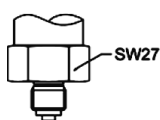
Température maxi : -20°C / +85°C.
 Température ambiante maxi: -20°C / 70°C

Plage de pression :

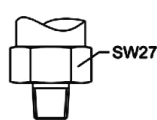
Nominal	0,4	0,6	1	1,6	2,5	4	6	10	16
pressure, bar	25	40	60	100	160	250	400	600	

STANDARDS

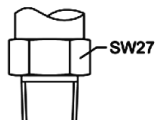
Different mechanical connections: thread connection BSP, NPT



G1/4" EN 837



1/4" NPT



1/2" NPT

TECOFI France - 83, Rue Marcel Mérieux 69960 Corbas - FRANCE
 Tél. +33 (0) 4 72 79 05 79 - Fax +33 (0) 4 78 90 19 19 / +33 (0) 4 72 79 05 70
 Adresses e-mail : sales@tecofi.fr ; tecofi@tecofi.fr / Site web : www.tecofi.fr