

BRASS SOLENOID VALVE (NC)

TECHNICAL PASSPORT

EV1144

PILOT OPERATED (NC) 2/2 SOLENOID VALVE BRASS BODY

APPLICATION

Solenoid valves are used for automatic flow sectioning operations in fluid transfer networks.

Ares of use: water distribution networks, pneumatic network, transport of neutral gas, fuel oil and steal, etc.



Fluids : Clear water, air, neutral gases, fuel, steam.

GENERAL CHARACTERISTICS

Range : from DN 1/2" to DN1".

Brass valve with stainless steel core and internal parts.

Membrane available in different materials.

Normally closed operation with differential pressure of 3 bar.

Class or protection IP 65

Solenoid valves can be mounted in any position. However, it is prohibited to install them with the coil in a vertical position below the body. Mounting direction is indicated by an arrow on the body.

For use on liquids, the installation of a protection filter is recommended



STANDARD

Connection	Threaded BSP connection according to ISO 228-1.
-------------------	---

Tecofi France

83 rue Marcel Mérieux - 69960 Corbas
Tél. +33 (0)4 72 79 05 79 - Fax. +33 (0)4 78 90 19 19
E-mail : sales@tecofi.fr - www.tecofi.fr

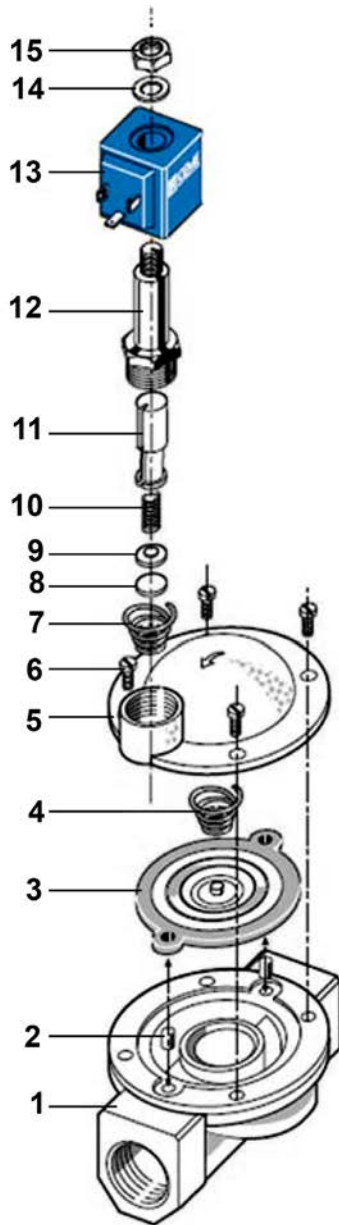


BRASS SOLENOID VALVE (NC)

TECHNICAL PASSPORT

EV1144

CONSTRUCTION



Pos.	Description	Material
1	Body	Brass EN CW 316 N
2	Bush	Brass
3	Diaphragm	NBR
4	Spring	Steel
5	Cover	Brass CW 617 N
6	Screw	Stainless steel
7	Spring	Steel
8	Seal	NBR
9	Support	Stainless steel AISI 303
10	Spring	Steel
11	Plunger	Stainless steel AISI 430
12	Tube guide	Stainless steel AISI 430
13	Coil	PBT + 30% glass fiber
14	Washer	Zinc plated steel
15	Lock nut	Zinc plated steel

The photographs and technical art works are not contractual. The specifications of the presented products are open to modifications without previous advice

Tecofi France

83 rue Marcel Mérieux - 69960 Corbas
 Tél. +33 (0)4 72 79 05 79 - Fax. +33 (0)4 78 90 19 19
 E-mail : sales@tecofi.fr - www.tecofi.fr

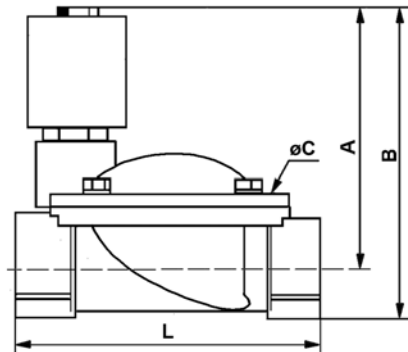


BRASS SOLENOID VALVE (NC)

TECHNICAL PASSPORT

EV1144

DIMENSIONS



DN		Bore (mm)	L	A	B	C	Kv (m³/h)	Maximum differential pressure (bar)		Operating time (ms)	Weight (kg)
mm	inch							AC	DC		
15	1/4"	12	61	77	89	48	2.1	0.3	10	20-60	0.6
20	3/8"	20	87	84	101	69	5.7	0.3	10	20-60	1
25	1/2"	25	100	86	106	80	9.6	0.3	10	20-60	1.2

ELECTRICAL SPECIFICATIONS

Coil	Current types	Available voltage (Volt)						Frequency (Hz)		Power consumption	
		12	24	48	110	230	400	50 Hz	60 Hz	Holding	Rush
B6	AC power	12	24	48	110	230	400	50 Hz	60 Hz	11 VA	24 VA
B6	DC power	12	24	48	110	-	-	-	-	16 W	-

Coil class H. Service 100%.
Connection by connector T30

Tecofi France

83 rue Marcel Mérieux - 69960 Corbas
Tél. +33 (0)4 72 79 05 79 - Fax. +33 (0)4 78 90 19 19
E-mail : sales@tecofi.fr - www.tecofi.fr



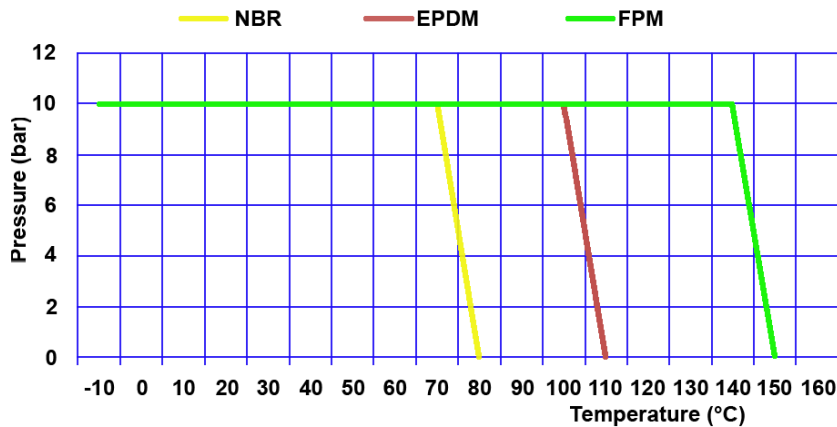
BRASS SOLENOID VALVE (NC)

TECHNICAL PASSPORT

EV1144

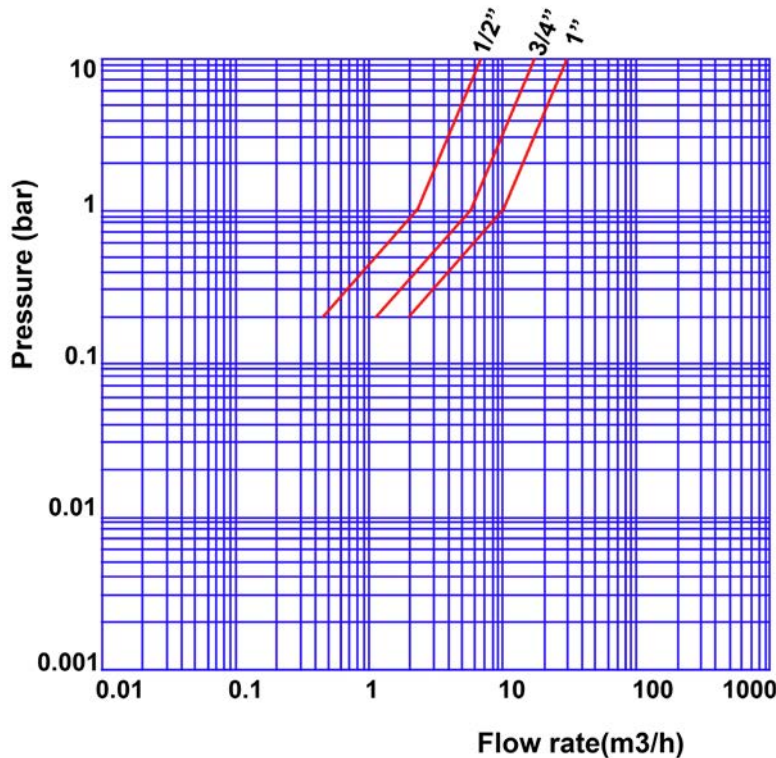
WORKING CONDITIONS

Maximum working pressure : 10 bar
Maximum temperature : +80°C (NBR in standard)
(possibility in option EPDM or FPM)



* En cas d'utilisation de courant continu au dessus de 40°C, la pression différentielle maximum peut être réduite.

HEAD LOSS DIAGRAMM



Tecofi France

83 rue Marcel Mérieux - 69960 Corbas
Tél. +33 (0)4 72 79 05 79 - Fax. +33 (0)4 78 90 19 19
E-mail : sales@tecofi.fr - www.tecofi.fr



The photographs and technical art works are not contractual. The specifications of the presented products are open to modifications without previous advice