

BRASS SOLENOID VALVE

TECHNICAL PASSPORT

EV1142

(NC) DIRECT ACTING 2/2 SOLENOID VALVE BRASS BODY

APPLICATION

Solenoid valves are used for applications requiring perfect control of flow in common fluid transfer networks.

Ares of use: water distribution networks, pneumatic network, transport of neutral gas, fuel oil and steal, etc.



Fluids : Clear water, air, neutral gases, fuel, steam.

GENERAL CHARACTERISTICS

Range : from DN 1/4" to DN1/2".

Brass valve with stainless steel core and internal parts.

Disc seal in FPM.

Does not require minimum differential pressure for service.

Operation with class F coil. 100% service connected by T30 connector according to DIN 43650.

Class or protection IP 65

Solenoid valves can be mounted in any position. However, it is prohibited to install them with the coil in a vertical position below the body.



STANDARD

Connection	Threaded BSP connection according to ISO 228-1.
-------------------	-------------------------------------------------

Tecofi France

83 rue Marcel Mérieux - 69960 Corbas
Tél. +33 (0)4 72 79 05 79 - Fax. +33 (0)4 78 90 19 19
E-mail : sales@tecofi.fr - www.tecofi.fr

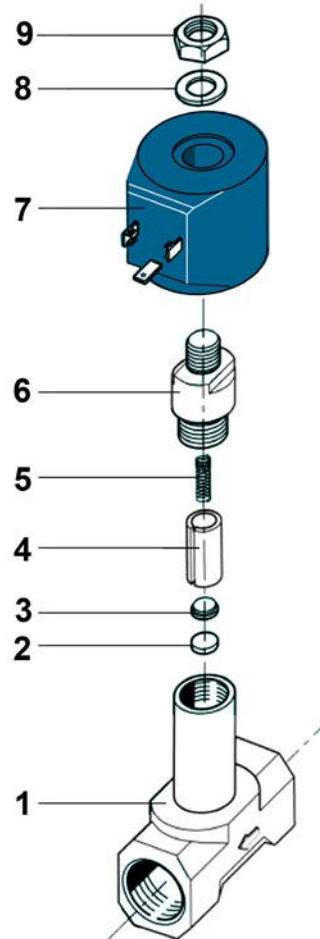


BRASS SOLENOID VALVE

TECHNICAL PASSPORT

EV1142

CONSTRUCTION



Pos.	Quantity	Description	Material
1	1	Body	Brass EN CW 617
2	1	Seal	FPM
3	1	Support	Stainless steel
4	1	Movable core	Stainless steel AISI 303
5	1	Spring	Stainless steel AISI 430
6	1	Guide tube	Stainless steel AISI 430
7	1	Coil	PBT + 30% fiber of glass
8	1	Washer	Galvanized steel
9	1	Nut	Galvanized steel

Tecofi France

83 rue Marcel Mérieux - 69960 Corbas
 Tél. +33 (0)4 72 79 05 79 - Fax. +33 (0)4 78 90 19 19
 E-mail : sales@tecofi.fr - www.tecofi.fr

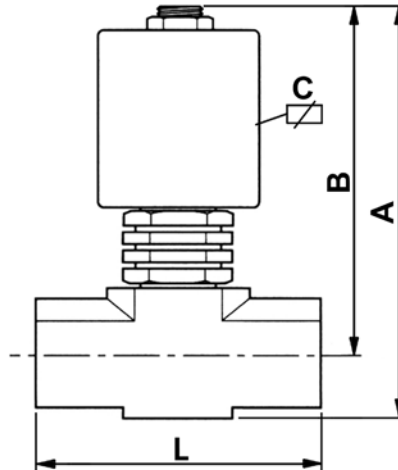


BRASS SOLENOID VALVE

TECHNICAL PASSPORT

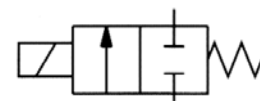
EV1142

DIMENSIONS



DN		Bore (mm)	L	A	B	C	Kv (m³/h)	Maximum differential pressure (bar)		Operating time (ms)	Weight (kg)
mm	inch							AC	DC		
8	1/4"	3.5	42	69	60	60	0.27	15	4	20-60	0.4
10	3/8"	3.5	47	73	62	60	0.30	15	4	20-60	0.45
15	1/2"	5.0	56	76	63	60	0.48	4.5	1	20-60	0.5

ELECTRICAL SPECIFICATIONS



Coil	Current types	Available voltage (Volt)						Frequencies (Hz)		Consumption	
		12	24	48	110	230	400	50 Hz	60 Hz	Sustaining	Call
B12	AC power	12	24	48	110	230	400	50 Hz	60 Hz	27 VA	38 VA
B12	DC power	12	24	48	110	-	-	-	-	14 W	-

Tecofi France

83 rue Marcel Mérieux - 69960 Corbas
 Tél. +33 (0)4 72 79 05 79 - Fax. +33 (0)4 78 90 19 19
 E-mail : sales@tecofi.fr - www.tecofi.fr



BRASS SOLENOID VALVE

TECHNICAL PASSPORT

EV1142

WORKING CONDITIONS

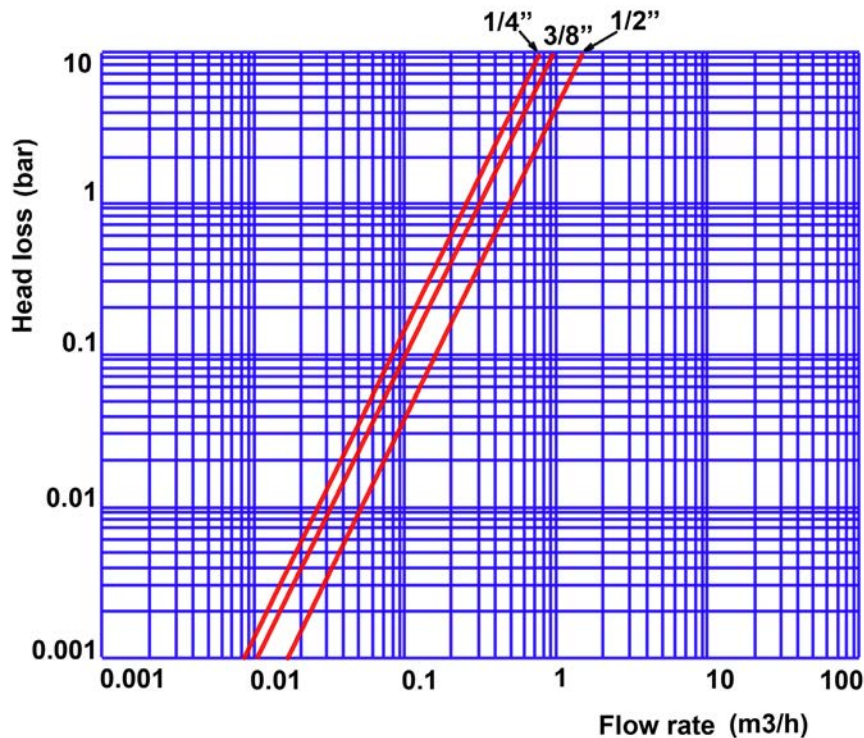
Fluid operating pressure in case of AC power: 15 bar (from DN1/4" to DN3/8")
5 bar (DN1/2")

Fluid operating pressure in case of DC power: 7 bar (from DN1/4" to DN3/8")
3 bar (DN1/2")

Maximum fluid temperature : +150°C
Ambient temperature limit* -10°C / +80°C

* When using direct current above 40°C, the maximum differential pressure can be reduced.

HEAD LOSS DIAGRAMM



The photographs and technical art works are not contractual. The specifications of the presented products are open to modifications without previous advice

Tecofi France

83 rue Marcel Mérieux - 69960 Corbas
Tél. +33 (0)4 72 79 05 79 - Fax. +33 (0)4 78 90 19 19
E-mail : sales@tecofi.fr - www.tecofi.fr

