

RUBBER EXPANSION JOINT

TECHNICAL PASSPORT

RUBBER EXPANSION JOINT WITH SWIVEL FLANGE PN25 AND CONTROL RODS

DI 7251N

APPLICATION

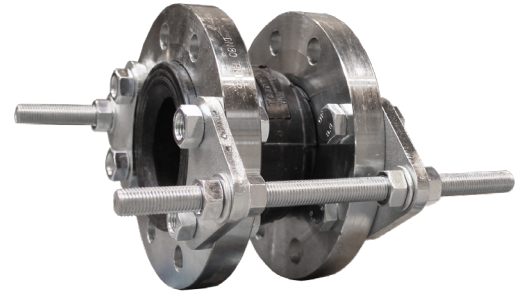
- Reduction of mechanical and thermal stress on pipes and related systems : pumps, compressors, motors.
- Absorption of vibrations and noise
- Compensation of axial, lateral and angular movements
- Correction of misalignment of the piping.



Fluids : hot and cold water

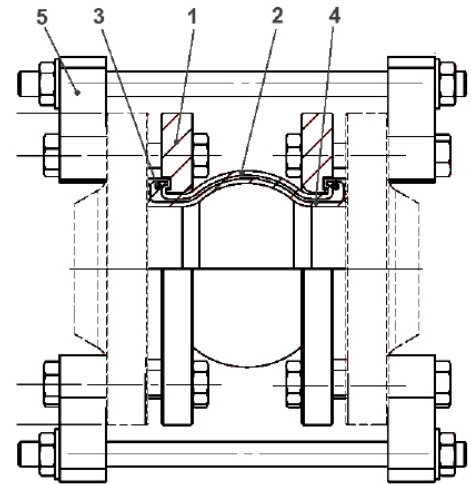
GENERAL CHARACTERISTICS

- Range** : from DN40 to DN300.
Universal expansion joint consisting of :
- EPDM elastomer bellows
 - Swivel flanges made of carbon steel zinc plated.
 - Identical face to face for all diameters.



CONSTRUCTION

Pos.	Quantity	Description	Material
1	2	Flange	Zinc plated steel
2	1	Bellow	EPDM
3	2	Reinforced wire	Steel
4	1	Reinforcement	Nylon tyre cord
5	1	Control rod	Galvanized steel



STANDARDS

Connection	Flange connection according to standard EN 1092-1 : PN25.
Tests	Pressure test according to standards EN12266-1, DIN 3230 and ISO 5208;

PRODUCT APPROVALS

Tecofi France

83 rue Marcel Mérieux - 69960 Corbas
Tél. +33 (0)4 72 79 05 79 - Fax. +33 (0)4 78 90 19 19
E-mail : sales@tecofi.fr - www.tecofi.fr



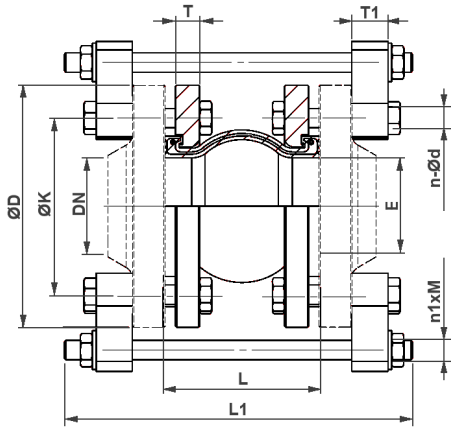
RUBBER EXPANSION JOINT

TECHNICAL PASSPORT

RUBBER EXPANSION JOINT WITH SWIVEL FLANGE PN25 AND CONTROL RODS

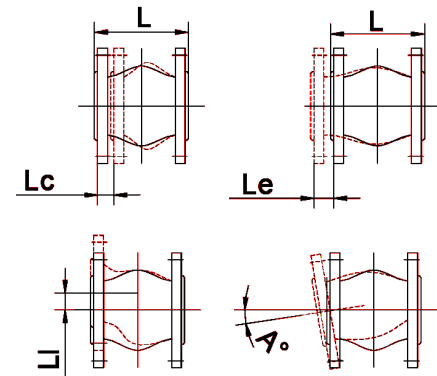
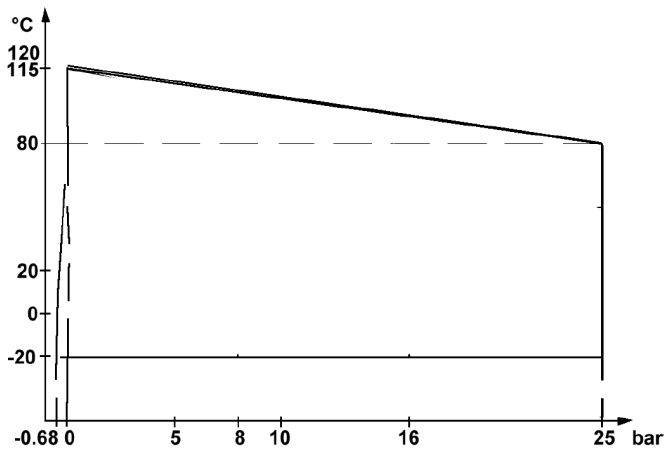
DI 7251N

DIMENSIONS



DN		L	L1	øK	E	n x ød	øD	Lc	Le	Li	A°	Weight (kg)
mm	inch											
40	1 1/2"	95	240	110	34-39	4 x ø18	150	10	6	10	25	15.9
50	2"	105	250	125	45-48	4 x ø18	165	10	6	10	25	18
65	2 1/2"	115	260	145	60-63	8 x ø18	185	15	8	12	25	19.7
80	3"	135	280	160	72-75	8 x ø18	200	15	8	12	25	21
100	4"	135	290	180	95-98	8 x ø23	220	20	12	16	15	24.4
125	5"	165	325	220	122-124	8 x ø27	250	20	12	16	15	30.6
150	6"	180	340	250	146-148	8 x ø27	285	20	12	16	15	34.1
200	8"	205	400	310	194-196	12 x ø27	340	20	12	16	15	53.9
250	10"	240	470	370	240-245	12 x ø30	395	30	14	25	8	81.8
300	12"	260	490	430	286-290	16 x ø30	445	30	14	25	8	107

WORKING CONDITIONS



Lc : Axial compression
Le: Axial elongation
Li: Lateral movement
A°: Angle movement

Tecofi France

83 rue Marcel Mérieux - 69960 Corbas
Tél. +33 (0)4 72 79 05 79 - Fax. +33 (0)4 78 90 19 19
E-mail : sales@tecofi.fr - www.tecofi.fr

