

Ref. : DI7241TIRANT.pas

Rev. : Initial

Date : 27/01/09

Page : 1/1

CONTROL RODS FOR EXPANSION JOINTS FLANGED TYPE DI7240 DI7241TIRANT



APPLICATION

Control rods are designed to minimize possible damage on the expansion joint caused by an excessive motion, an abnormal temperature fluctuation, pressure surges, guiding of piping or failure of anchoring. Where these situations may occur, control units must be used to limit the amount and direction of movement.

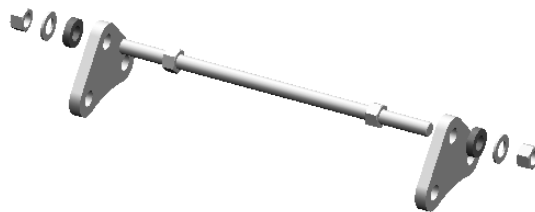
GENERAL CHARACTERISTICS

Range : from DN40 to DN600.

CONSTRUCTION

2	*	Control rod	Steel galvanized
1	*	Gusset plate	Steel galvanized
Pos.	Qty.	Description	Material

* see table



DIMENSIONS

DN		T	L	M	Number of control rod sets	Weight (kg)
mm	inch					
40	1"1/2	10	240	16	2	2,4
50	2"	10	250	16	2	2,5
65	2"1/2	10	260	16	2	2,7
80	3"	10	280	16	2	2,0
100	4"	10	290	16	2	2,4
125	5"	10	325	16	2	2,6
150	6"	12	340	16	2	1,6
200	8"	12	370	20	2	2,8
250	10"	18	440	20	3	6,2
300	12"	18	460	20	3	8,3
350	14"	20	460	20	4	7,2
400	16"	20	470	20	4	8,9
450	18"	20	480	20	4	8,0
500	20"	20	480	20	4	9,6
600	24"	20	495	24	4	21,7

