

CONTROL RODS FOR EXPANSION JOINTS FLANGED TYPE DI7240N DI7241NTIRANT

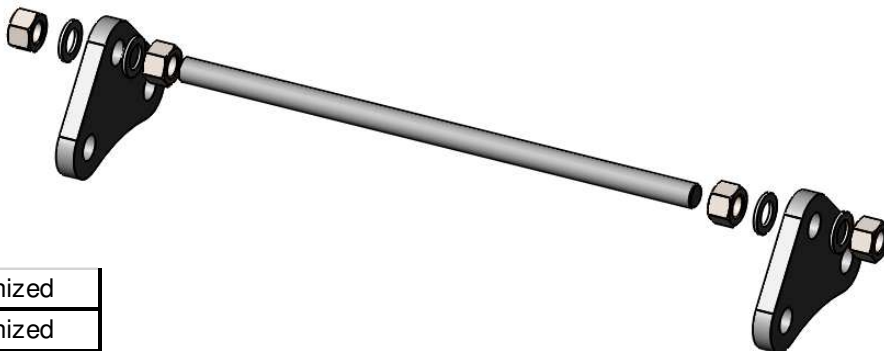


APPLICATION

Control rods are designed to minimize possible damage on the expansion joint caused by an excessive motion, an abnormal temperature fluctuation, pressure surges, guiding of piping or failure of anchoring. Where these situations may occur, control units must be used to limit the amount and direction of movement.

GENERAL CHARACTERISTICS

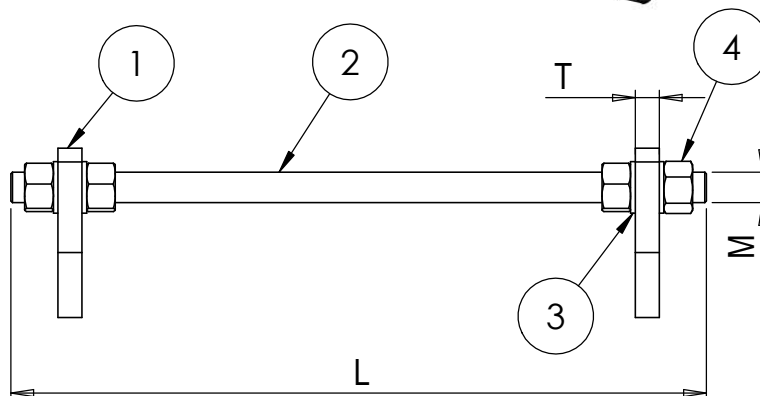
Range : from DN40 to DN600.



CONSTRUCTION

4	*	Nut	Steel galvanized
3	*	Washer	Steel galvanized
2	*	Control rod	Steel galvanized
1	*	Gusset plate	Steel galvanized
Pos.	Qty.	Description	Material

* see table



DIMENSIONS

DN		n	Ø h	T	L	M	B	Number of control rod sets	Number of washer and nuts	weight (kg)
mm	inch									
40	1 1/2	4	18	10	240	16	77,8	2	8	2,7
50	2	4	18	10	250	16	88,4	2	8	2,9
65	2 1/2	4	18	10	260	16	102,5	2	8	2,3
80	3	8	18	10	280	16	61,2	2	8	2,5
100	4	8	18	10	290	16	68,9	2	8	2,8
125	5	8	18	10	325	16	80,4	2	8	2,8
150	6	8	23	12	340	16	91,8	2	8	3,6
200	8	8	23	16	370	20	112,9	2	8	6,4
250	10	12	23	25	440	24	90,6	3	12	10,4
300	12	12	23	25	470	24	103,5	3	12	13,3
350	14	16	23	25	480	24	89,7	4	16	16,5
400	16	16	27	25	480	24	100,5	4	16	17,2
450	18	20	27	25	490	24	88,4	4	16	19,7
500	20	20	27	25	490	28	97,0	4	16	22,5
600	24	20	30	25	500	28	113,4	4	16	32,4

