

Ref. : DI7241NTIRANT16

Rev. : B

Date : 24/10/2019

Page : 1/1

# CONTROL RODS FOR EXPANSION JOINTS FLANGED TYPE DI724016N DI7241NTIRANT16



### APPLICATION

Control rods are designed to minimize possible damage on the expansion joint caused by an excessive motion, an abnormal temperature fluctuation, pressure surges, guiding of piping or failure of anchoring. Where these situations may occur, control units must be used to limit the amount and direction of movement.

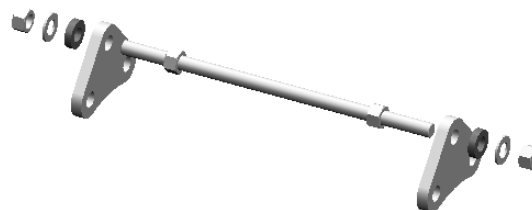
### GENERAL CHARACTERISTICS

Range : from DN200 to DN600.

### CONSTRUCTION

2	*	Control rod	Steel galvanized
1	*	Gusset plate	Steel galvanized
Pos.	Qty.	Description	Material

\* see table



### DIMENSIONS

DN		T	L	M	Number of control rod sets	Weight (kg)
mm	inch					
200	8"	16	400	20	3	7.44
250	10"	25	470	24	3	10.05
300	12"	25	490	24	3	15.75
350	14"	30	490	30	4	18.93
400	16"	30	510	30	4	19.53
450	18"	30	530	30	4	21.06
500	20"	30	530	33	4	24.55
600	24"	30	550	33	4	35.64

