

RUBBER EXPANSION JOINT

TECHNICAL PASSPORT

RUBBER EXPANSION JOINT WITH SWIVEL FLANGE

DI 7240NI

APPLICATION

- Reduction of mechanical and thermal stress on pipes and related systems : pumps, compressors, motors.
- Absorption of vibrations, expansion and noise
- Compensation of axial, lateral and angular movements
- Correction of misalignment of the piping.



Fluids : hot and cold water

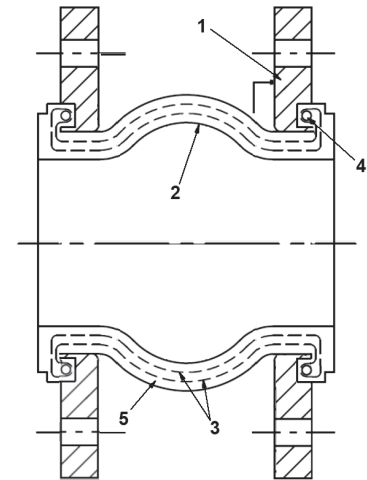
GENERAL CHARACTERISTICS

- Range** : from DN32 to DN200.
 Universal expansion joint consisting of :
 -NBR elastomer bellows
 -Made of swivel electro galvanized flanges.



CONSTRUCTION

Pos.	Description	Material
1	Flange	Electro galvanized steel
2	Inner tube	NBR
3	Reinforcement	Nylon tyre cord
4	Brace	Hard steel
5	Cover	EPDM



STANDARDS

Connection	Flange connection according to standard EN 1092-1: PN10/16 from DN32 to DN150 PN10 for DN200
Tests	Pressure test according to standards EN12266-1, DIN 3230 and ISO 5208

PRODUCT APPROVALS



Tecofi France

83 rue Marcel Mérieux - 69960 Corbas
 Tél. +33 (0)4 72 79 05 79 - Fax. +33 (0)4 78 90 19 19
 E-mail : sales@tecofi.fr - www.tecofi.fr



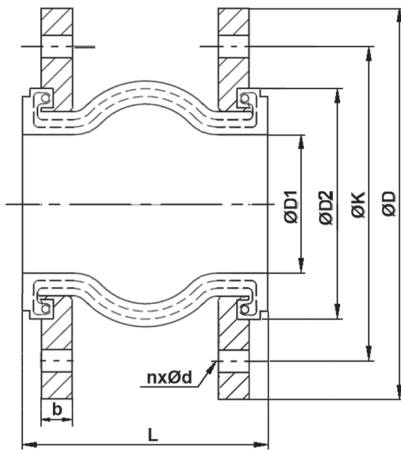
RUBBER EXPANSION JOINT

TECHNICAL PASSPORT

RUBBER EXPANSION JOINT WITH SWIVEL FLANGE

DI 7240NI

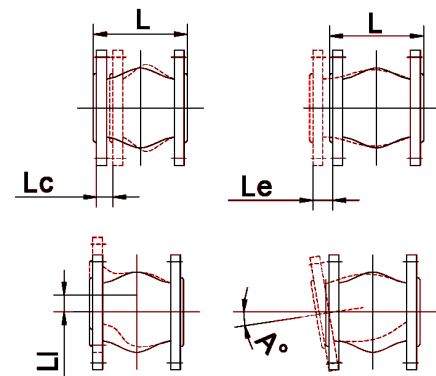
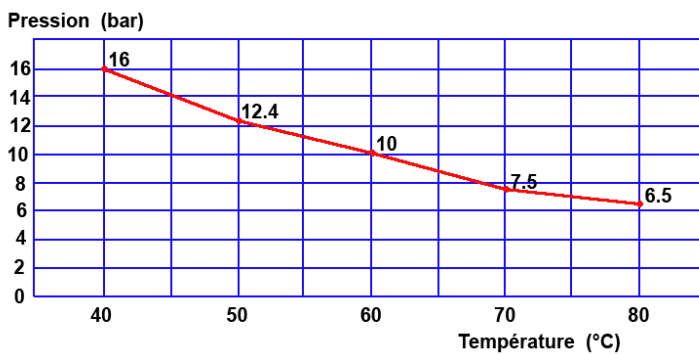
DIMENSIONS



DN		L	ØD	ØD1	ØD2	ØK	n x Ød	b	Lc	Le	Li	A°	Weight (kg)
mm	inch												
32	1 1/4	95	140	29	69	100	4 x Ø19	14	8	4	8	15°	2.85
40	1 1/2	95	150	37	79	110	4 x Ø19	14	8	4	8	15°	3.15
50	2"	105	165	47	90	125	4 x Ø19	15	8	4	8	15°	4.15
65	2 1/2	115	185	57	108	145	4 x Ø19	15	12	6	10	15°	4.95
80	3"	130	200	74	124	160	8 x Ø19	17	12	6	10	15°	6.05
100	4"	135	220	91	145	180	8 x Ø19	17	12	10	12	15°	6.95
125	5"	170	250	119	179	210	8 x Ø19	19	16	10	12	15°	9.6
150	6"	180	285	145	209	240	8 x Ø23	19	16	10	12	15°	11.85
200	8"	205	340	199	261	295	8 x Ø23	20	20	14	18	15°	16.9

WORKING CONDITIONS

Maximum working pressure: 16 bar
Maximum working temperature: -10°C / 80°C



Lc : Axial compression
Le: Axial elongation
Li: Lateral movement
A°: Angular movement

Tecofi France

83 rue Marcel Mérieux - 69960 Corbas
Tél. +33 (0)4 72 79 05 79 - Fax. +33 (0)4 78 90 19 19
E-mail : sales@tecofi.fr - www.tecofi.fr

