

## RUBBER EXPANSION JOINT

### TECHNICAL PASSPORT

#### RUBBER EXPANSION JOINT WITH SWIVEL FLANGE

DI 7240NIL130

#### APPLICATION

- Reduction of mechanical and thermal stress on pipes and related systems : pumps, compressors, motors.
- Absorption of vibrations, expansion and noise
- Compensation of axial, lateral and angular movements
- Correction of misalignment of the piping.



Fluids : hot and cold water

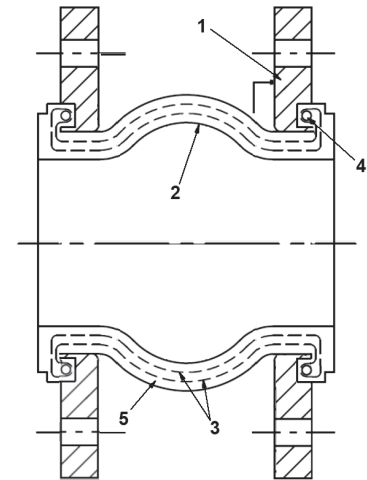


#### GENERAL CHARACTERISTICS

- Range** : from DN32 to DN200.  
 Universal expansion joint consisting of :
- NBR elastomer bellows
  - Made of swivel electro galvanized flanges.
  - Identical face to face for all diameters.

#### CONSTRUCTION

Pos.	Description	Material
1	Flange	Electro galvanized steel
2	Inner tube	NBR
3	Reinforcement	Nylon tyre cord
4	Brace	Hard steel
5	Cover	EPDM



#### STANDARDS

<b>Connection</b>	Flange connection according to standard EN 1092-1: PN10/16 from DN32 to DN150 PN10 for DN200
<b>Tests</b>	Pressure test according to standards EN12266-1, DIN 3230 and ISO 5208

#### PRODUCT APPROVALS



#### Tecofi France

83 rue Marcel Mérieux - 69960 Corbas  
 Tél. +33 (0)4 72 79 05 79 - Fax. +33 (0)4 78 90 19 19  
 E-mail : sales@tecofi.fr - [www.tecofi.fr](http://www.tecofi.fr)



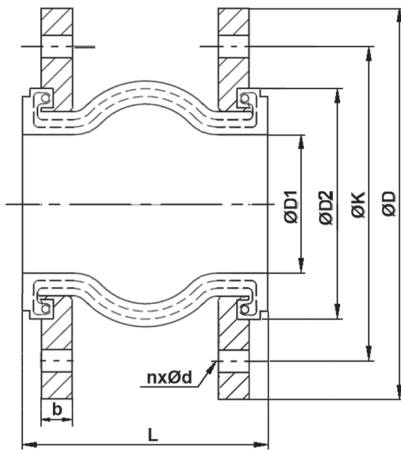
## RUBBER EXPANSION JOINT

### TECHNICAL PASSPORT

#### RUBBER EXPANSION JOINT WITH SWIVEL FLANGE

DI 7240NIL130

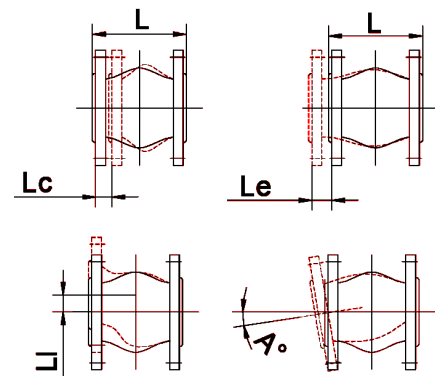
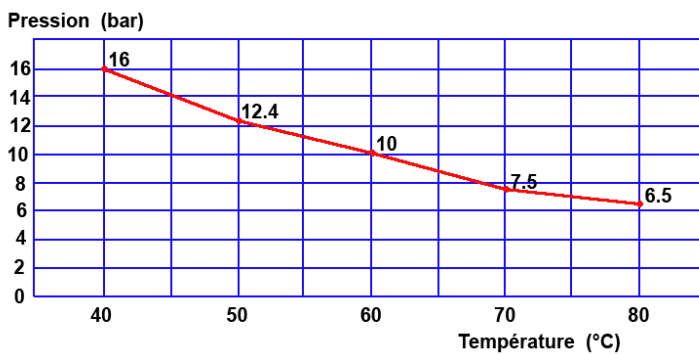
#### DIMENSIONS



DN		L	ØD	ØD1	ØD2	ØK	n x Ød	b	Lc	Le	Li	A°	Weight (kg)
mm	inch												
32	1"1/4	130	140	29	69	100	4 x Ø19	14	8	4	8	15°	2.85
40	1"1/2	130	150	36	78	110	4 x Ø19	14	8	4	8	15°	3.2
50	2"	130	165	48	89	125	4 x Ø19	15	8	4	8	15°	4.2
65	2"1/2	130	185	63	108	145	4 x Ø19	15	12	6	10	15°	4.95
80	3"	130	200	72	123	160	8 x Ø19	17	12	6	10	15°	6
100	4"	130	220	92	145	180	8 x Ø19	17	12	10	12	15°	9.85
125	5"	130	250	123	180	210	8 x Ø19	19	16	10	12	15°	9.3
150	6"	130	285	144	209	240	8 x Ø23	19	16	10	12	15°	11.25
200	8"	130	340	199	259	295	8 x Ø23	20	20	14	18	15°	15.7

#### WORKING CONDITIONS

Maximum working pressure: 16 bar  
Maximum working temperature: -10°C / 80°C



Lc : Axial compression  
Le: Axial elongation  
Li: Lateral movement  
A°: Angular movement

#### Tecofi France

83 rue Marcel Mérieux - 69960 Corbas  
Tél. +33 (0)4 72 79 05 79 - Fax. +33 (0)4 78 90 19 19  
E-mail : sales@tecofi.fr - [www.tecofi.fr](http://www.tecofi.fr)

