

RUBBER EXPANSION JOINT

TECHNICAL PASSPORT

RUBBER EXPANSION JOINT WITH SWIVEL FLANGE

DI 7200A

APPLICATION

- Reduction of mechanical and thermal stress on pipes and related systems : pumps, compressors, motors.
- Absorption of vibrations and noise
- Compensation of axial, lateral and angular movements
- Correction of misalignment of the piping.



Fluids : hot and cold water

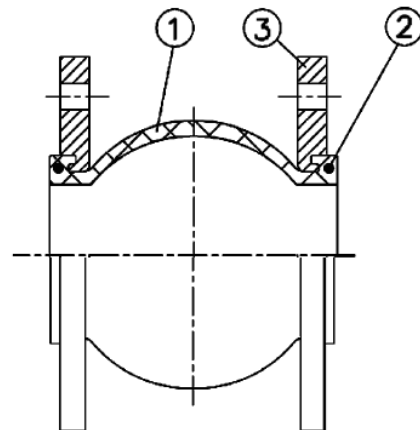


GENERAL CHARACTERISTICS

- Range :** from DN32 to DN500.
 Universal expansion joint consisting of :
- Elastomer bellows
 - Swivel flanges made of carbon steel zinc plated.
 - Identical face to face for all diameters.

CONSTRUCTION

Pos.	Quantity	Description	Material
1	1	Internal bellow	EPDM
2	2	Reinforced wire	Carbon steel
3	2	Flange	Zinc plated steel



STANDARDS

Connection	Flange connection according to standard ASME150 B16.5.
Tests	Pressure test according to standards EN12266-1, DIN 3230 and ISO 5208:

PRODUCT APPROVALS



Tecofi France

83 rue Marcel Mérieux - 69960 Corbas
 Tél. +33 (0)4 72 79 05 79 - Fax. +33 (0)4 78 90 19 19
 E-mail : sales@tecofi.fr - www.tecofi.fr



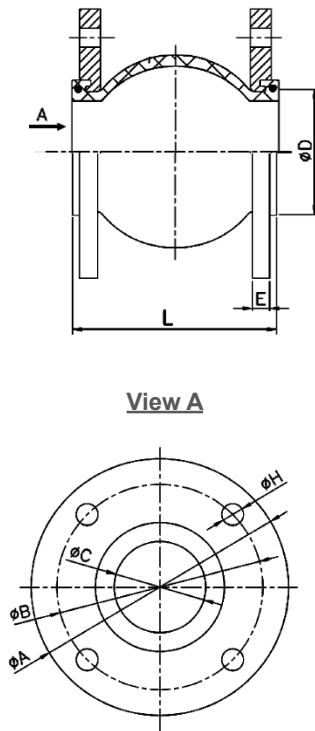
RUBBER EXPANSION JOINT

TECHNICAL PASSPORT

RUBBER EXPANSION JOINT WITH SWIVEL FLANGE

DI 7200A

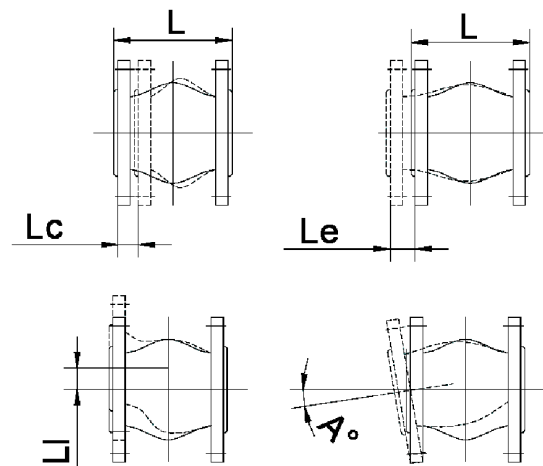
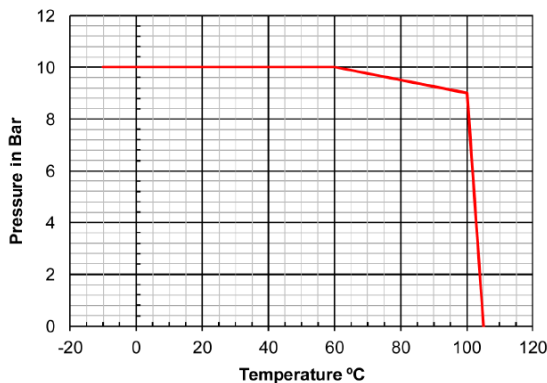
DIMENSIONS



DN		L	ϕD	ϕK	b	n x ϕd	Lc	Le	Li	A°	Weight (kg)
mm	inch										
32	1"1/4	95	140	100	16	4 x $\phi 18$	10	6	10	25	3.2
40	1"1/2	95	150	110	16	4 x $\phi 18$	10	6	10	25	3.7
50	2"	105	165	125	16	4 x $\phi 18$	10	6	10	25	4.2
65	2"1/2	115	185	145	18	8 x $\phi 18$	15	8	12	25	5.4
80	3"	135	200	160	18	8 x $\phi 18$	15	8	12	25	6.5
100	4"	135	220	180	18	8 x $\phi 18$	20	12	16	15	7.1
125	5"	165	250	210	20	8 x $\phi 18$	20	12	16	15	9.9
150	6"	180	285	240	22	8 x $\phi 22$	20	12	16	15	12.7
200	8"	205	340	295	22	12 x $\phi 22$	20	12	16	15	17.1
250	10"	240	395	355	24	12 x $\phi 24$	30	14	25	8	25.5
300	12"	260	445	410	26	12 x $\phi 24$	30	14	25	8	32.6
350	14"	265	505	470	28	16 x $\phi 24$	30	14	25	8	39.6
400	16"	265	565	525	30	16 x $\phi 27$	30	14	25	8	46.8
450	18"	265	615	585	30	20 x $\phi 27$	30	14	25	8	53.5
500	20"	265	670	650	32	20 x $\phi 30$	30	14	25	8	64.7
600	24"	265	780	770	36	20 x $\phi 33$	30	14	25	8	79.8

WORKING CONDITIONS

Maximum working temperature : -10°C / +105°C
 Maximum working pressure : 10 bar
 Maximum vacuum pressure : 400 mbar



Lc : Axial compression
 Le : Axial elongation
 Li : Lateral movement
 A° : Angle movement

Tecofi France

83 rue Marcel Mérieux - 69960 Corbas
 Tél. +33 (0)4 72 79 05 79 - Fax. +33 (0)4 78 90 19 19
 E-mail : sales@tecofi.fr - www.tecofi.fr

