

Ref. : DI7140N

Rev. : D

Date : 25/01/2018

Page : 1/1

# RUBBER EXPANSION JOINT BSPT FEMALE THREADED

## DI 7140N



### APPLICATION

Hot water, cold water, water treatment, sewerage, heating, air conditioning, control of vibrations and noise on pipes etc.

### GENERAL CHARACTERISTICS

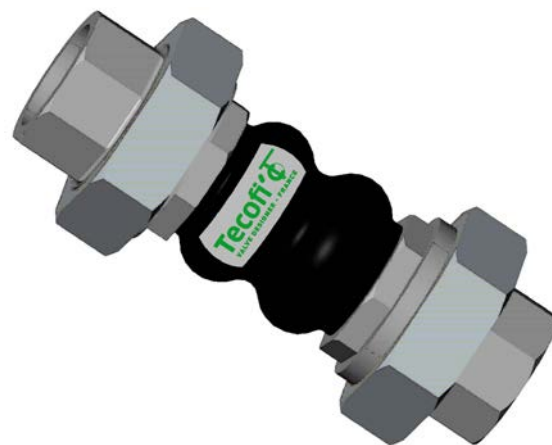
EPDM rubber bellow  
Female cast iron 3 pieces BSPT threaded union ends.

Movement:

- Axial compression,
- Axial elongation,
- Lateral movement.

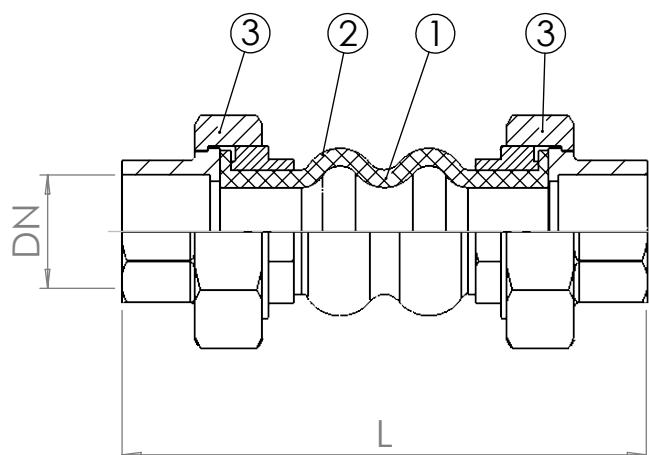
### CONSTRUCTION

3	2	Union	Malleable iron
2	1	Reinforcement	Nylon tyre cord
1	1	Bellow	EPDM rubber
Pos.	Qty.	Description	Material

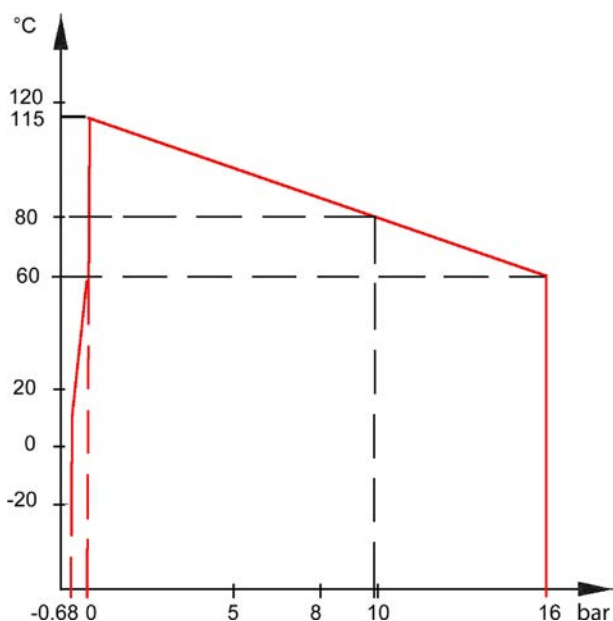


### DIMENSIONS

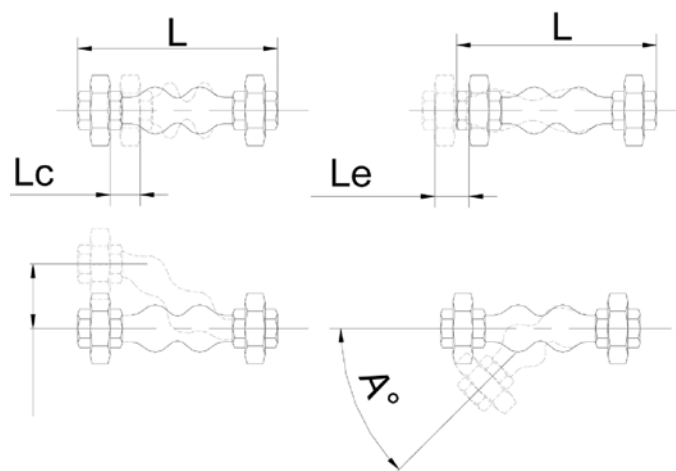
DN		L	Lc	Le	LI	A°	Weights (kg)
mm	inch						
15	1/2"	200	22	6	22	20°	0.70
20	3/4"	200	22	6	22	20°	0.75
25	1"	200	22	6	22	20°	1.22
32	1 1/4"	200	22	6	22	20°	1.51
40	1 1/2"	200	22	6	22	20°	2.03
50	2"	220	22	6	22	20°	2.62



### WORKING CONDITIONS



Lc : Axial compression.  
Le : Axial extension.  
LI : Lateral movement.



### STANDARDS

BSPT female threaded according to standard ISO 228-1.

**TECOFI France** - 83, Rue Marcel Mérieux 69960 Corbas - FRANCE  
Tél. +33 (0) 4 72 79 05 79 - Fax +33 (0) 4 78 90 19 19 / +33 (0) 4 72 79 05 70  
Adresses e-mail : sales@tecofi.fr ; tecofi@tecofi.fr / Site web : www.tecofi.fr