

# THREADED BALL CHECK VALVE

TECHNICAL PASSPORT

## BALL CHECK VALVE - DUCTILE IRON BODY THREADED CONNECTION

CBL 4141

### APPLICATION

The TECOFI ball check valve is suitable for wastewater transfer applications and for heavy or viscous fluids.



**General use:** discharge of wastewater, purification, sanitation, pumping

### GENERAL CHARACTERISTICS

**Range:** from DN25 to DN65.

- Design according to EN 16767.
- Resilient seated non return check valve.
- Mounting direction is indicated by an arrow on the body.
- Self-cleaning ball that moves freely in the body,
- Low pressure drop.
- Complete erasure of the ball allowing full passage.
- Mounting in horizontal or vertical ascending position.
- Lifting ring on the bonnet for easy handling.
- Easy maintenance thanks to the easy disassembly of the bonnet.
- Plug for unclogging the ball under the body.



### STANDARDS

<b>Design</b>	Meets the requirements of European Directive 2014/68/UE: «Equipment under pressure» product excluded (article 3 §3), except group1 gases.
<b>Face to face</b>	Face to face dimension according to NF EN 558-1 serie 48, DIN 3202/1 serie F6.
<b>Connection</b>	Threaded connection according to ISO 228-1.
<b>Tests</b>	Hydraulic tests according to EN12266-1, DIN 3230, BS 5154 and ISO 5208: - Body : 15 bar - Seat : 11 bar

### PRODUCT APPROVALS



### Tecofi France

83 rue Marcel Mérieux - 69960 Corbas  
Tél. +33 (0)4 72 79 05 79 - Fax. +33 (0)4 78 90 19 19  
E-mail : sales@tecofi.fr - [www.tecofi.fr](http://www.tecofi.fr)



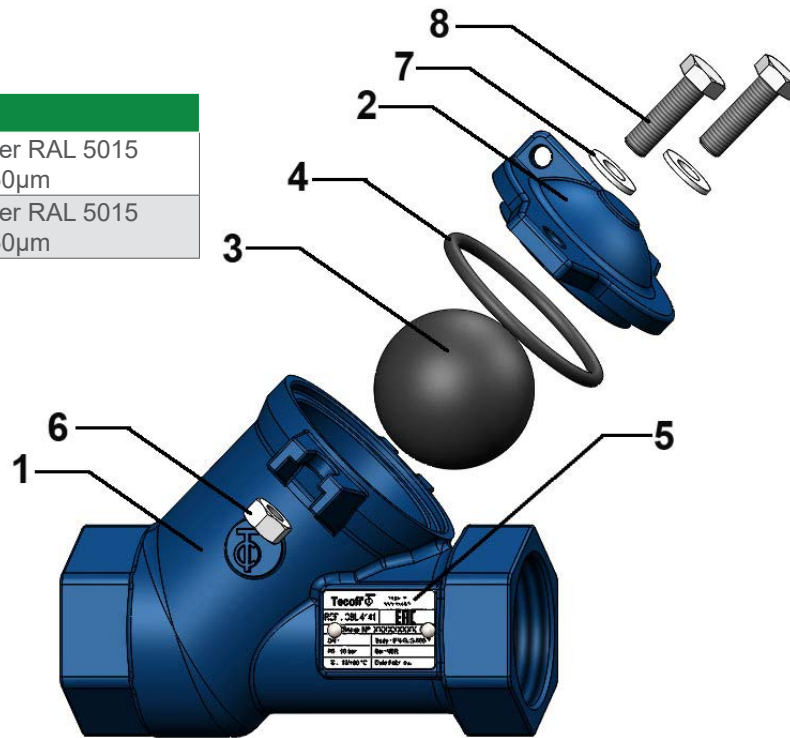
## THREADED BALL CHECK VALVE

TECHNICAL PASSPORT

CBL 4141

### CONSTRUCTION

Component	Coating
Body (1)	Epoxy powder RAL 5015 thickness 250µm
Bonnet (2)	Epoxy powder RAL 5015 thickness 250µm



Pos.	Q-ty	Description	Material	Equivalences		
				DIN	ASTM	BS
1	1	Body	Ductile iron EN-GJS-500-7	GGG 50	A536 70-50-05	1563 EN-JS1050
2	1	Bonnet	Ductile iron EN-GJS-500-7	GGG 50	A536 70-50-05	1563 EN-JS1050
3	1	Ball	DN 25-50 : NBR DN 65 : Aluminium + NBR			
4	1	Gasket	NBR			
5	1	Nameplate	Aluminium			
6	2	Nut	Stainless steel A2-70			
7	2	Washer	Stainless steel A2-70			
8	1	Screw	Stainless steel A2-70			

### Tecofi France

83 rue Marcel Mérieux - 69960 Corbas  
Tél. +33 (0)4 72 79 05 79 - Fax. +33 (0)4 78 90 19 19  
E-mail : sales@tecofi.fr - [www.tecofi.fr](http://www.tecofi.fr)

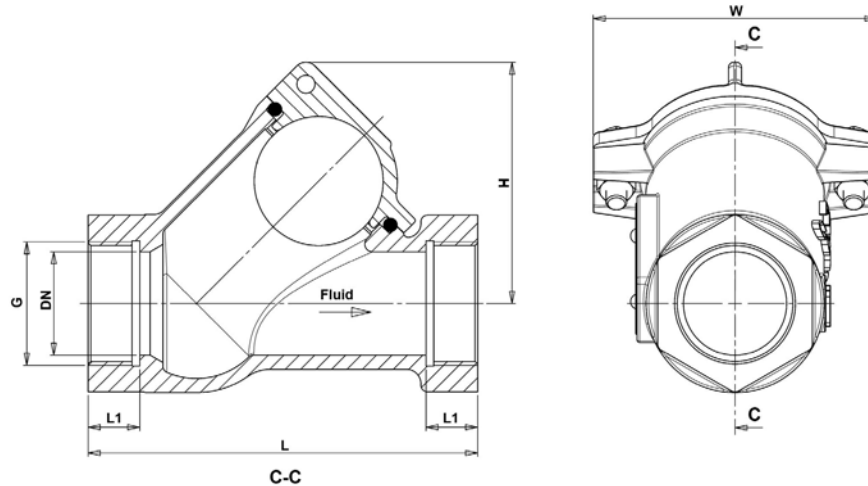


## THREADED BALL CHECK VALVE

### TECHNICAL PASSPORT

**CBL 4141**

#### DIMENSIONS

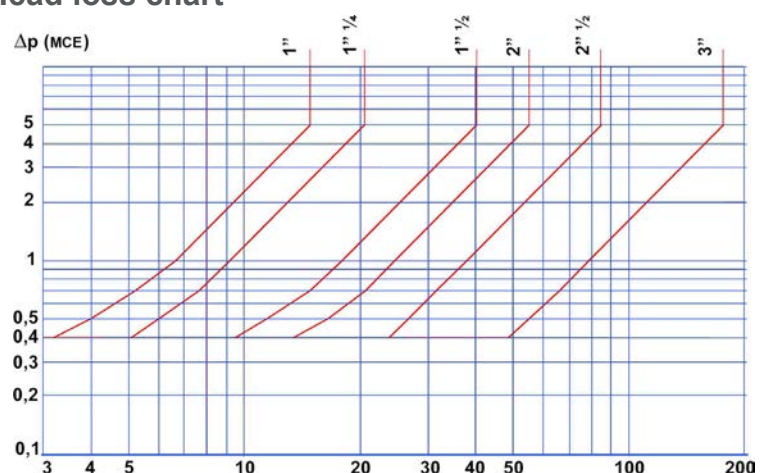


DN		L	H	G	L1	W	Weight (kg)
mm	inch						
25	1"	125	75	G1"	16	96	1.3
32	1"1/4	133	79	G1"1/4	18	96	1.51
40	1"1/2	151	93	G1"1/2	20	110	2.12
50	2"	175	111	G2"	24	132	3.23
65	2"1/2	202	111	G2"1/2	28	132	4.27

#### WORKING CONDITIONS

Maximum working pressure : 10 bar.  
Maximum working temperature : -10°C / +90°C.

#### Head loss chart



**⚠** During the mounting it is recommended to maintain a distance of 3 to 5 times the minimal diameter upstream and downstream of an elbow or appliance. This makes it possible to stay out of areas of turbulence likely to increase the risk of wear.  
At the discharge of a pump it is advisable to carry out the assembly in accordance with the **FD CEN/TR 13932** standards

**Tecofi France**

83 rue Marcel Mérieux - 69960 Corbas  
Tél. +33 (0)4 72 79 05 79 - Fax. +33 (0)4 78 90 19 19  
E-mail : [sales@tecofi.fr](mailto:sales@tecofi.fr) - [www.tecofi.fr](http://www.tecofi.fr)

