

THREADED BALL NON-RETURN VALVE

CBL 4140

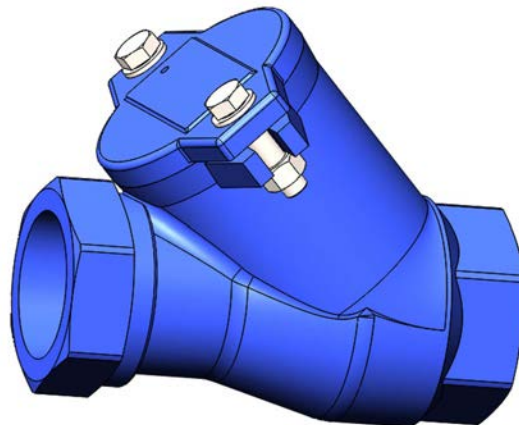


APPLICATION

General uses: waste water, sticky fluids, raising water (purification, water treatment, pumping...)

GENERAL CHARACTERISTICS

Design in accordance with standard EN 16767.
BSP threaded connection.
Tight and working in horizontal or vertical position.
Low head loss.
Full bore thanks to the moving of the ball.
Self-cleaning ball.
Easy and quick disassembling cover.
Flat cover from DN25 to DN65 and round shape cover for DN80.
Body: oven baked epoxy 150 µm, RAL 5019.



CONSTRUCTION

4	1	Ball	DN25-40 Nitril DN50-80 NBR coated Aluminium	
3	1	Gasket	Nitril	
2	1	Bonnet	Ductile iron EN-GJS-400-15	DIN: GGG 40 ASTM: A536 65-45-12 BS: 1563 EN-JS1030
1	1	Corps	Ductile iron EN-GJS-400-15	DIN: GGG 40 ASTM: A536 65-45-12 BS: 1563 EN-JS1030
Pos.	Q-ty	Description	Material	

DIMENSIONS

DN		L	H	Weight (kg)
mm	inch			
25	1"	141	72,71	1,8
32	1"1/4	141	76,23	2
40	1"1/2	150	91,45	3
50	2"	175	111,24	4,8
65	2"1/2	214	114,9	6,2
80	3"	248	160,39	12

WORKING CONDITIONS

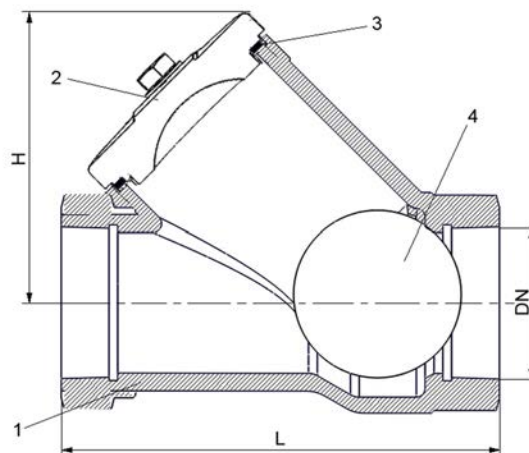
Maximum working pressure : 10 bar.
Maximum temperature : + 80°C.
Warning: On request for low load.

Pressure test according to standards EN 12266-1, DIN 3230, BS 6755 and ISO 5208 :

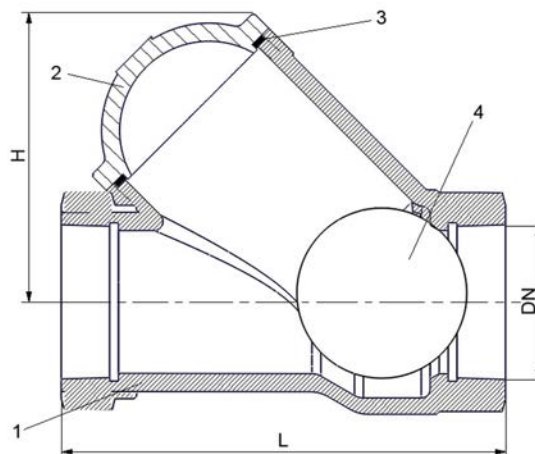
Body : 15 bar.
Seat : 11 bar.

STANDARDS

DIRECTIVE 2014/68/UE «Equipment under pressure»:
products excluded (article 3 § 3), except gaz of group 1.
BSP threaded according to standard ISO 228-1.



DN 25 - 65



DN 80