

Ref. : CB 4450.pas

Rev. : H

Date : 15/10/2015

Page : 1/1

WAFER TYPE DUAL PLATE CHECK VALVE

CB 4450



APPLICATION

General uses: pumping, water supply, gas, air conditioning installation.

GENERAL CHARACTERISTICS

Design in accordance with standard NF EN 12334 and NF EN 14341.
Range: From DN 40 to DN 800.

Mounting between flanges.

Working positions: horizontal and vertical ascending, and vertical descending position < DN 150.

Mounting in accordance with many standards connections.

Low head loss.

Stainless steel spring technology to avoid fluid hammer.

CONSTRUCTION

6	6	Washer	PTFE	
5	2	Stem	Stainless steel	
4	2	Spring	Stainless steel	
3	2	Gasket	EPDM	
2	2	Plate	Ductile iron EN-GJS-400-15	DIN: GGG 40 ASTM: A536 65-45-12 BS: 1563 EN-JS1030
1	2	Body	Ductile iron EN-GJS-400-15	DIN: GGG 40 ASTM: A536 65-45-12 BS: 1563 EN-JS1030
Rep.	Qty.	Description	Material	

DIMENSIONS

DN		L	Ø A	Ø D	Ø C	Weight (kg)
mm	inch					
40	1"1/2	43	66	90	45	1.22
50	2"	43	66	107	45	1.71
65	2"1/2	46	81	127	58	2.46
80	3"	64	95	142	66	3.76
100	4"	64	118	167	84	4.88
125	5"	70	145	193	115	6.74
150	6"	76	170	223	133	9.65
200	8"	89	225	283	182	15.54
250	10"	114	266	340	220	27.26
300	12"	114	311	400	259	38.78
350	14"	127	360	450	298	55
400	16"	140	410	510	350	77
450	18"	152	450	560	385	101
500	20"	152	505	620	438	111
600	24"	178	624	725	538	172
700	28"	229	720	830	640	291
800	32"	241	825	940	730	314

WORKING CONDITIONS

Minimum opening pressure : near to zero

Maximum working pressure : 25 bar.

Maximum temperature : +110°C.

Pressure test according to standards

EN 12266-1, DIN 3230, BS 6755 and ISO 5208 :

Body : 37.5 bar.

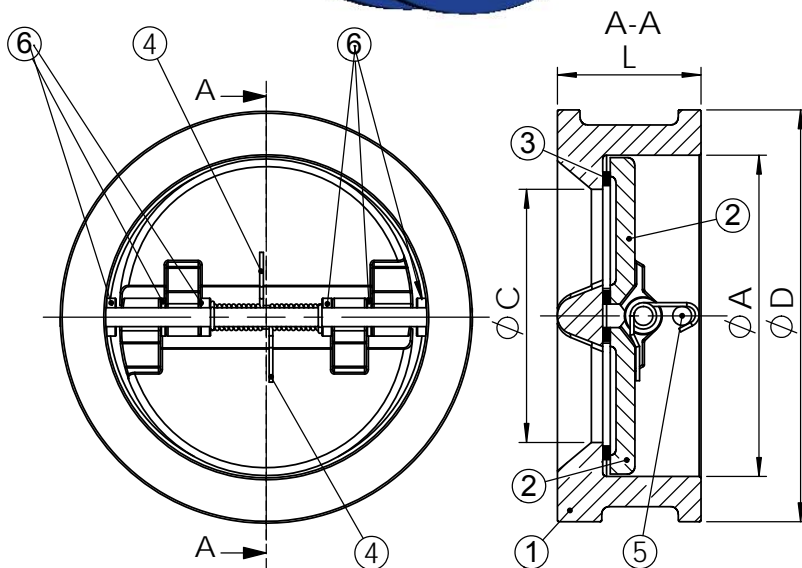
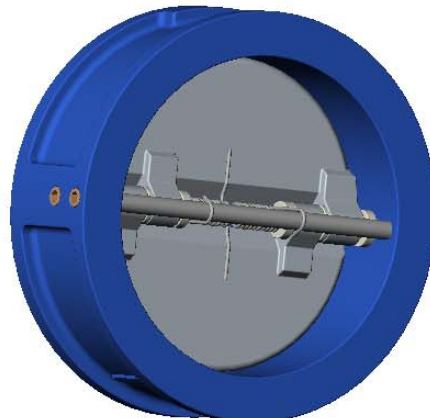
Seat : 27.5 bar.

STANDARDS

Manufacture according to the requirements of the European directive 2014/68/UE «Equipment under pressure»: category III modulate H.

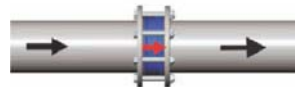
Face to face according to standards NF EN 558-1 serie 16 tab11 and DIN 3202 except for DN40 (face to face of DN40 same as DN50).

Mounting between flanges PN25 according to EN 1092-2, ASA 150 lbs on request.



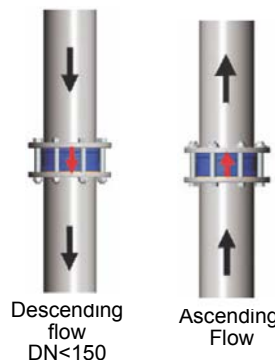
Horizontal

For assembling in horizontal position, check axis as to be placed in vertical position.



Vertical

To be assembled in vertical position the opening direction of the plates has to be in accordance to the direction of the fluid



TECOFI France - 83, Rue Marcel Mérieux 69960 Corbas - FRANCE
Tél. +33 (0) 4 72 79 05 79 - Fax +33 (0) 4 78 90 19 19 / +33 (0) 4 72 79 05 70
Adresses e-mail : sales@tecofi.fr ; tecofi@tecofi.fr / Site web : www.tecofi.fr