

WAFER TYPE DOUBLE PLATE CHECK VALVE

TECHNICAL PASSPORT

**DOUBLE PLATE CHECK VALVE
CAST IRON BODY BETWEEN FLANGES ASA150**

CB 4442

APPLICATION

The swing check valve TECOFI is suitable for non-loaded fluid transfer applications under regular non-pulsating conditions.

Area of use : pumping, water supply, chemical industry, desalination plants.



Fluids : clear and slightly charged waters, sea water.



GENERAL CHARACTERISTICS

Range : from DN50 to DN600.

Design according to NF EN 12334 and NF EN 14341.

Ensures the flowing on fluid in one direction and closes as soon as the direction is reversed. the tightness is guaranteed by the O-ring attached to the body and the plates that pivot around the central axis located in the middle of the check valve
Symmetrical flow with full opening.

The mounting direction is indicated by the arrow on the body.

Robust, lightweight and economical construction guaranteeing a small face to face dimension and requiring no maintenance. Lifting ring from DN200 for easier handling. Internal and external coating in epoxy paint. Good characteristics, low pressure losses. Mounting on horizontal or vertical ascending piping. Closing assisted by stainless steel spring preventing the propagation of water hammer.

AGREMENTS ET NORMES

Design	Design according to NF EN 12334 and NF EN 14341.
Face to face	Face to face dimensions according to EN 558 Serie 16 and DIN 3202.
Connection	Mounting between flanges ASA 150 following EN14341 / ASME B16.34..
Tests	Hydraulically tested according to EN12266-1, DIN 3230, BS 5154 and ISO 5208: - Body : PS x 1.5 bar - Seat : PS x 1.1 bar

PRODUCT APPROVALS

EAC

Tecofi France

83 rue Marcel Mérieux - 69960 Corbas
Tél. +33 (0)4 72 79 05 79 - Fax. +33 (0)4 78 90 19 19
E-mail : sales@tecofi.fr - www.tecofi.fr



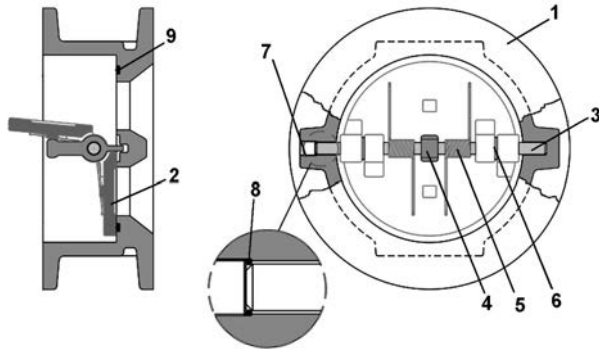
WAFER TYPE DOUBLE PLATE CHECK VALVE

TECHNICAL PASSPORT

CB 4442

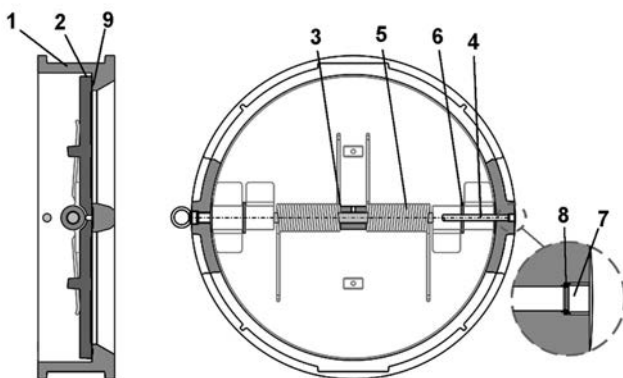
CONSTRUCTION

DN50-200



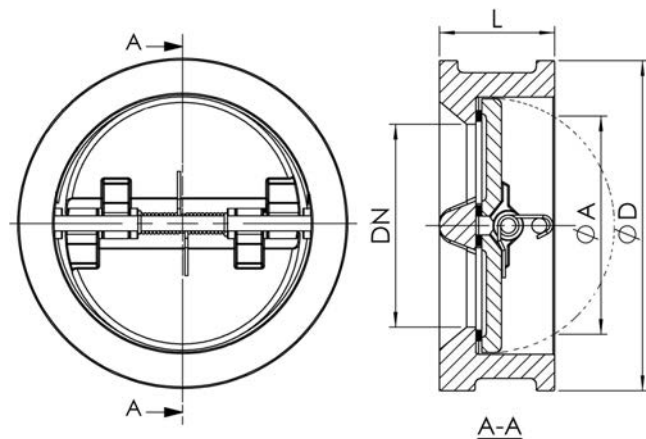
Pos.	Description	Material	Equivalences		
			DIN	ASTM	BS
1	Body	Ductile iron En-GJS-400-15	GGG40	A536 65-45-12	1563 EN-JS1030
2	Plate	Steel	GS-C25	A216 Grade WCB	1504 161 Grade B
3	Axis	Stainless steel 304	X5CrNi 18-10	AISI 304	304 S15
4	Pin	Stainless steel CF8M			
5	Spring	Stainless steel 302			
6	Washer	Stainless steel 304	X5CrNi 18-10	AISI 304	304 S15
7	Bushing	Steel			
8	Gasket	NBR			
9	Seat	NBR			

DN250-600



Pos.	Description	Material	Equivalences		
			DIN	ASTM	BS
1	Body	Ductile iron En-GJS-400-15	GGG40	A536 65-45-12	1563 EN-JS1030
2	Plate	Ductile iron En-GJS-400-15	GGG40	A536 65-45-12	1563 EN-JS1030
3	Axis	Stainless steel 304	X5CrNi 18-10	AISI 304	304 S15
4	Pin	Stainless steel CF8M			
5	Spring	Stainless steel 302			
6	Washer	Stainless steel 304	X5CrNi 18-10	AISI 304	304 S15
7	Bushing	Steel			
8	Gasket	NBR			
9	Seat	NBR			

DIMENSIONS



DN		L	Ø D	Ø A	Weight (kg)
mm	inch				
50	2"	43	103	46	1.5
65	2 1/2"	46	122	62	1.9
80	3"	64	134	70	3
100	4"	64	170	90	4
125	5"	70	194	110	6
150	6"	76	220	130	8.5
200	8"	89	278	196	14.5
250	10"	114	337	245	28
300	12"	114	407	292	34
350	14"	127	448	340	55
400	16"	140	511	380	72
450	18"	152	546	436	95
500	20"	152	603	490	127
600	24"	178	715	580	193

Tecofi France

83 rue Marcel Mérioux - 69960 Corbas
Tél. +33 (0)4 72 79 05 79 - Fax. +33 (0)4 78 90 19 19
E-mail : sales@tecofi.fr - www.tecofi.fr

ISO 9001
ISO 14001
BUREAU VERITAS
Certification



WAFER TYPE DOUBLE PLATE CHECK VALVE

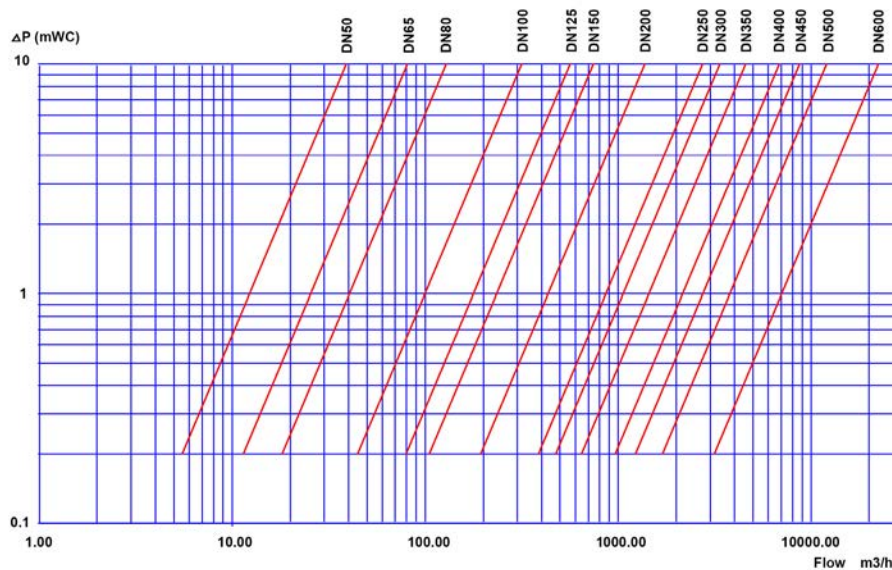
TECHNICAL PASSPORT

CB 4442

WORKING CONDITIONS

Maximum working pressure : 20 bar
Back pressure for sealing : 2 bar
Maximum working temperature : +100°C

HEAD LOSS DIAGRAMM

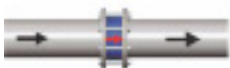


FLOW FACTOR AND CRACKING PRESSURE

DN	mm	50	65	80	100	125	150	200	250	300	350	400	450	500	600
	inch	2"	2 1/2"	3"	4"	5"	6"	8"	10"	12"	14"	16"	18"	20"	14"
Minimum opening pressure (mbar)		3.21	3.05	2.85	2.42	2.17	1.96	1.55	1.43	1.29	1.17	1.08	0.98	0.9	0.79
Kv		44	90	135	333	606	803	1435	2905	3504	4786	7179	8974	12939	23076

MOUNTING POSITION

Horizontal:



For horizontal mounting, the axis of the check valve must be vertical.



Vertical:



Vertical mounting with ascending fluid.

⚠ During the mounting it is recommended to maintain a distance of 3 to 5 times the nominal diameter upstream and downstream of an elbow or appliance. This makes it possible to stay out of areas of turbulence likely to increase the risk of wear.

At the discharge of a pump it is advisable to carry out the assembly in accordance with the FD CEN/TR 13932 standards.

Tecofi France

83 rue Marcel Mérieux - 69960 Corbas
Tél. +33 (0)4 72 79 05 79 - Fax. +33 (0)4 78 90 19 19
E-mail : sales@tecofi.fr - www.tecofi.fr

ISO 9001
ISO 14001
BUREAU VERITAS
Certification

