

THREADED BALL VALVE

TECHNICAL PASSPORT

3 PIECES STAINLESS STEEL SOCKET WELDING BALL VALVE FULL BORE

BS 6375SW

APPLICATION

Area of use: Chemical and pharmaceutical industries petro-chemical industries, hydraulic installations.



Fluids: water, steam, oil, compatible liquid products.

GENERAL CHARACTERISTICS

Range: DN1/4" to DN4".

- Full bore, anti blow-out stem.
- Gland packing with elastic washer for backlash adjustment.
- With tie rods connecting the ends to the body.
- PTFE food seal in accordance with standard FDA n° 21 CFR 177.1550



AGREMENTS ET NORMES

Design	Meets the requirements of European Directive 2014/68/UE: «Equipment under pressure» modulate H.
Connection	Socket welding (SW) according to NFA 49115
Test	Pressure tests according to EN12266-1, DIN 3230, BS 5154 and ISO 5208. - Body : PS x 1.5 (bar) - Seat : PS x 1.1 (bar)

PRODUCT APPROVALS



Tecofi France

83 rue Marcel Mérieux - 69960 Corbas
Tél. +33 (0)4 72 79 05 79 - Fax. +33 (0)4 78 90 19 19
E-mail : sales@tecofi.fr - www.tecofi.fr

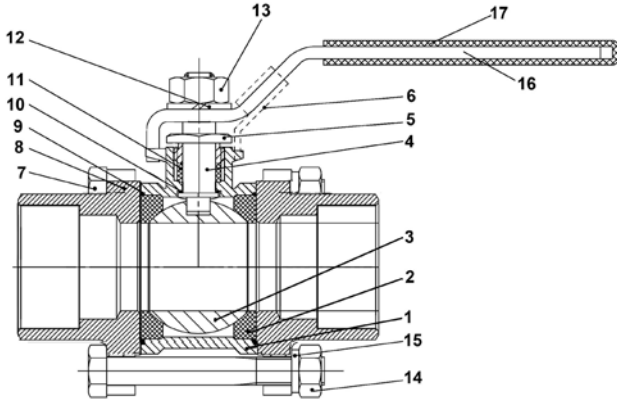


THREADED BALL VALVE

TECHNICAL PASSPORT

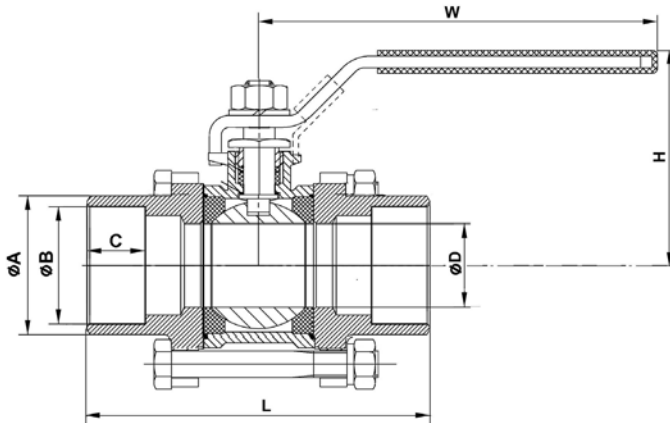
BS 6375SW

CONSTRUCTION



Pos.	Q-ty	Description	Material
1	1	Body	Stainless steel CF8M
2	2	Seat	PTFE
3	1	Ball	Stainless steel 316
4	1	Stem	Stainless steel 316
5	1	Packing nut	Stainless steel 304
6	1	Locking device	Stainless steel 304
7	4-6	Screw	Stainless steel 304
8	2	End cap	Stainless steel CF8M
9	2	Gasket	PTFE
10	1	Thrust washer	PTFE
11	1	Packing	PTFE
12	1	Stem washer	Stainless steel 304
13	1	Stem nut	Stainless steel 304
14	4-6	Nut	Stainless steel 304
15	4-6	Spring washer	Stainless steel 304
16	1	Handle	Stainless steel 304
17	1	Sleeve	Plastic

DIMENSIONS

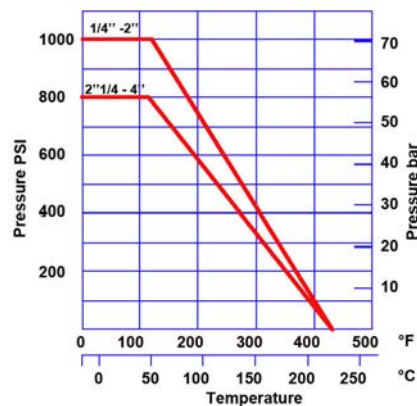


DN		L	H	ØA	ØB	C	ØD	W	Weight (kg)
mm	inch								
8	1/4"	55	52	19	13.7	10	11.6	105	0.3
10	3/8"	60	52	22.1	17.7	10	12.5	105	0.3
15	1/2"	75	55	26	21.7	10	15	105	0.4
20	3/4"	80	63	32.8	27.2	13	20	105	0.6
25	1"	90	70	40	34.2	13	25	137	0.8
32	1 1/4"	110	76	48	42.7	13	32	137	1.3
40	1 1/2"	120	89	55	48.7	13	38	182	1.6
50	2"	140	97	67.1	61.2	16	50	182	2.5
65	2 1/2"	162	143	84.2	76.7	16	64	260	5.3
80	3"	184	152	100.8	89.7	16	76	260	7.9
100	4"	228	187	128	115.2	17	94	403	14

WORKING CONDITIONS

Maximum working pressure : 1/4" - 2" : 63 bar
2 1/2" - 4" : 50 bar

Maximum working temperature: -20°C /+200°C.



Tecofi France

83 rue Marcel Mérieux - 69960 Corbas
Tél. +33 (0)4 72 79 05 79 - Fax. +33 (0)4 78 90 19 19
E-mail : sales@tecofi.fr - www.tecofi.fr

