

Ref. : BM 3102.pas

Rev. : Initial

Date : 26/01/09

Page : 1/1

MIXING VALVE "TERMOMIX" 4 WAY

BM 3102



Tecofi
VALVE DESIGNER - FRANCE

APPLICATION

The mixing valve are used in heating installations for to mix hot water and cooled water.

GENERAL CHARACTERISTICS

Range : from DN 20 to DN 50.

Manual.

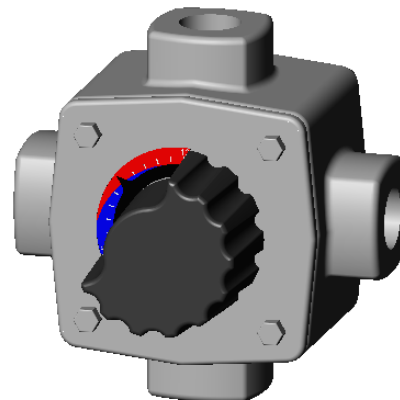
Rotation angle 90°.

4 ways.

Flanged PN10.

CONSTRUCTION

Pos.	Qty.	Description	Material
5	1	Flask	Aluminium
4	1	O-ring	EPDM
3	1	Stem	Brass
2	1	Plug	Brass
1	1	Body	Fonte



DIMENSIONS

DN		A	B	C	D	Kvs	Weight (kg)
mm	inch						
20	3/4"	110	32	67	110	13	1,8
25	1"	112	32	67	112	17	1,9
32	1"1/4	127	36	70	127	24	2,6
40	1"1/2	127	40	73	127	31	3,1
50	2"	135	48	80	135	41	4,6

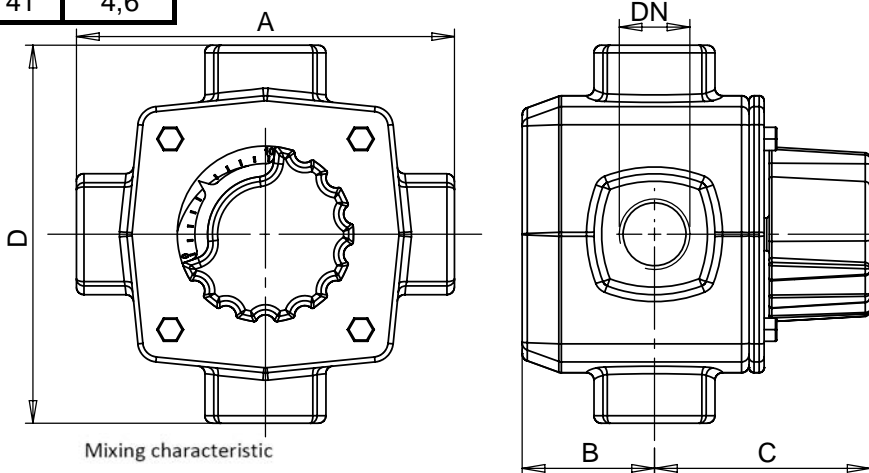
WORKING CONDITIONS

Maximum temperature : 110°C

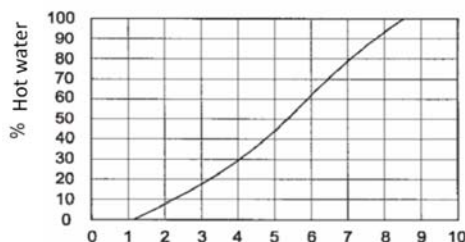
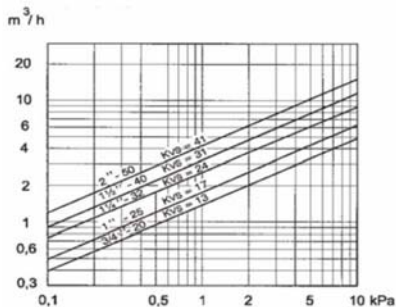
Maximum pressure : 10 bar.

AGREMENT AND TESTING

Threaded fittings



Head loss



Indications of the caloric power depending on the diameter

(Indicative data for boilers or fuel gas)

Power (kW)	16	23	35	53	95	120
Diameter	1/2"	3/4"	1"	1"1/4	1"1/2	2"

TECOFI France - 83, Rue Marcel Mérieux 69960 Corbas - FRANCE
Tél. +33 (0) 4 72 79 05 79 - Fax +33 (0) 4 78 90 19 19 / +33 (0) 4 72 79 05 70
Adresses e-mail : sales@tecofi.fr ; tecofi@tecofi.fr / Site web : www.tecofi.fr