

QUICK FLANGE ADAPTOR

TECHNICAL PASSPORT

QUICK FLANGE ADAPTOR FOR PE/PVC PIPES

ADTPEPVC

APPLICATION

The quick flange adaptors are used as a junction products between flanges and PE or PVC pipes.



Fluids: drinking water, clear water, compatible liquids.

GENERAL CHARACTERISTICS

Range: from DN40 to DN400.
Design according to EN545/ISO2531.
Connection PN10/PN16.

CONSTRUCTION

Pos.	Description	Material	Standard
1	Body	Ductile iron GGG50	EN1563
2	Grip ring	Brass CuZn36P03	CuZn36P03
3	Rubber	EPDM	EN 682-1

DIMENSIONS

DN		reference	L	D	D0	Weight (kg)
mm	inch					
DN40-50	1" 1/2 - 2"	ADTPEPVC	50	165	50	1.7
DN50	2"	ADTPEPVC	55	165	63	1.8
DN60-65	2" 1/4 - 2" 1/2	ADTPEPVC	55	185	63	2.4
DN60-65	2" 1/4 - 2" 1/2	ADTPEPVC	58	185	75	2.2
DN80	3"	ADTPEPVC	60	200	90	2.8
DN100	4"	ADTPEPVC	68	220	110	4
DN125	5"	ADTPEPVC	70	250	125	4.2
DN125	5"	ADTPEPVC	75	250	140	4.1
DN150	6"	ADTPEPVC	80	285	160	6.5
DN200	8"	ADTPEPVC	90	340	200	8.5
DN200	8"	ADTPEPVC	93	340	225	8
DN250	10"	ADTPEPVC	95	400	250	12.5
DN300	12"	ADTPEPVC	100	455	315	15
DN400	16"	ADTPEPVC	120	580	400	25

STANDARDS

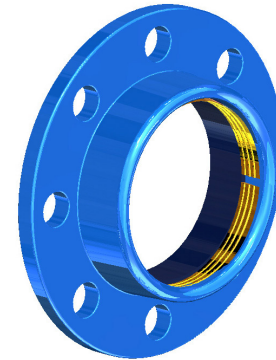
Connection	ISO PN10/16 according to EN1092-2, ISO 7005/2, BS4504.
------------	--

HOMOLOGATION PRODUIT

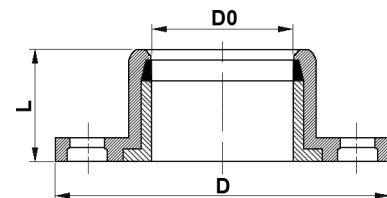
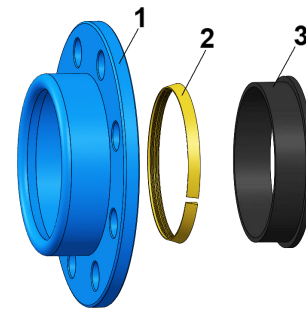


Tecofi France

83 rue Marcel Mérieux - 69960 Corbas
Tél. +33 (0)4 72 79 05 79 - Fax. +33 (0)4 78 90 19 19
E-mail : sales@tecofi.fr - www.tecofi.fr



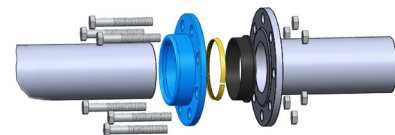
Epoxy coated body RAL 5015, 250 µm thickness



WORKING CONDITIONS

Maximum working pressure: 16 bar
Température de service maxi : 90°C

ASSEMBLING



Assembly is carried out on the valve or flange sealing faces that do not include a flexible sealing element. It is not recommended to use the butterfly valve with sleeve, certain types of pinch valves, rubber expansion joints, etc.

