

DOUBLE EXCENTRATION BUTTERFLY VALVE WITH FLANGES

APPLICATION

TECWAT type butterfly valves are intended to be used in fluid transfer circuits such as: water networks, pumping stations, dams, and industrial sites.

Fluid: raw, clear, potable water



**IN STOCK
UP TO DN 1000!
dismantling joint included**

COMPLETE RANGE

Range: DN 80 up to DN 1600 (EN558, series 14)

Our range is equipped with an IP67 mechanical gearbox and an open/closed position indicator as a standard, with an ISO5210 flange to easily mount a multi-turn electric actuator.

Corrosion is the source of jams. Our design protects the rotating pieces in contact with the fluid (aluminum-bronze lining and O-ring seals). Our production scrupulously follows the characteristics and procedures stated in the standards EN1074-1 and EN1074-2.

DN80 au DN1600	
PN	Ref.
10	VP4208-08EPxxxx
16	VP4248-08EPxxxx

PN25/40 on request



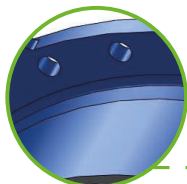
HIGH RESISTANCE TO CORROSION





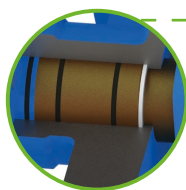
DESIGN FEATURES

DUCTILE IRON EN-GJS-500-7 BODY AND DISC (GGG50)*



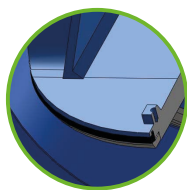
ALUMINIUM BRONZE BEARING

improves shaft rotation



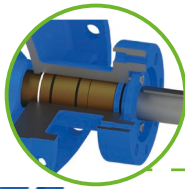
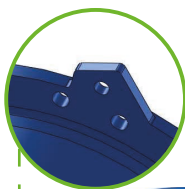
THE EPDM SEAT GASKET

held in place by a 304 stainless steel ring. No disassembly required to change the seal.



LIFTING EYES

secured and eased installation



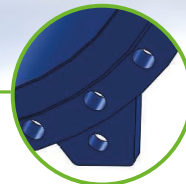
420 STAINLESS STEEL SHAFT

The thirteen percent chrome SS 420 shaft guarantees high mechanical resistance. Coupled with aluminum-bronze bearings, the dry shaft type design is ensured!

MANUAL GEARBOX IP67 WITH HANDWHEEL AND ISO TOP FLANGE FOR ACTUATOR CONNECTION

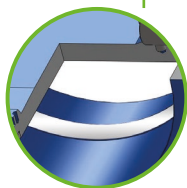
SUPPORT FEET

Guaranteed stability



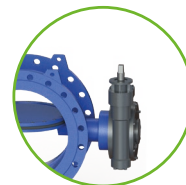
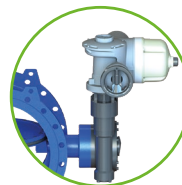
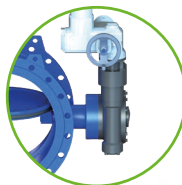
STAINLESS STEEL 304 SEAT

High resistance to corrosion. Low surface roughness. Inert material.



DN80-150 :
Built-in seat
DN200-1600
Welded seat

Other operating systems available:



CHARACTERISTICS

Oven-baked epoxy powder coating, min. thickness 250µm RAL5015

Gearbox protection class **IP 67**

Double eccentric disc

Gearbox clockwise to close as standard (counterclockwise option possible)

ISO 5210 standardized upper flange for actuator connection

Complies with **WRAS** and **ACS** agreements



* Other material on request

✓ ADVANTAGES

- ✓ **The advantage of the double eccentric disc:** the seat gasket is not in contact with the body during operation but only when in the fully closed position on its conical stainless steel seat.

ROBUST DESIGN

- ✓ Ductile iron body EN-GJS-500-7 (GGG50)
- ✓ Replaceable EPDM seal
- ✓ SS 304 welded seat from DN200 (smaller DN, seat built in)
- ✓ Retaining bolts in stainless steel (A2,304)
- ✓ Epoxy coating 250µm body + disc
- ✓ IP67 manual gearbox (IP68 option)

EASY TO USE

- ✓ Self-lubricated bearings: maintenance free
- ✓ Low pressure drop due to special disc design to improve the flow
- ✓ Reduced operating torque
- ✓ Double eccentric disc: perfect sealing and resistance to high pressures

100% WATERTIGHT

- ✓ Bidirectional sealing with preferential flow direction (indicated with an arrow on the body)
- ✓ Shafts with aluminum bronze bearing for a better friction coefficient and with sealing rings to prevent all contact between the fluid and the moving parts that could be susceptible to corrosion

STANDARDS & TESTS

- ✓ Hydraulic tests according to standard EN12266-1
Body test: 1,5 x PN / Seat test: 1,1 x PN
- ✓ Design according to standard NF EN 593
Flanged connection ISO PN10 or PN16 according to standards EN1092-2 / ISO7005-2



TECOFI QUALITY

French manufacturer and an expert in the water field, TECOFI offers valves that are 100% tested and designed according to EU and international standards. Our R&D team is at your disposal to study your constraints, adapting our products to your specific needs.

