

FEMALE BSP SOLENOID VALVE

TECHNICAL PASSPORT

EV1140

SOLENOID VALVE NORMALLY CLOSED BSP THREADED CONNECTION

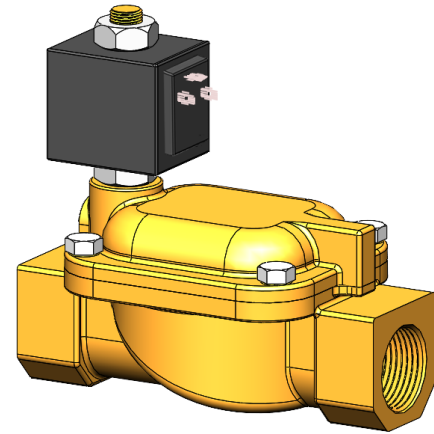
APPLICATION

Solenoid valves are used for applications requiring perfect control of fluid flow.

Area of use: water distribution network, irrigation system, power generation, plumbing industrial washing machines, car wash plants, cooling of machine tools, water jet cleaners, autoclaves, irrigation systems, etc..



Fluids : Clear water, hot water, steam, light oils.
«Do not use for gases and air»



GENERAL CHARACTERISTICS

Range : from DN 3/8" to DN3".

Pilot operated diaphragm valve with low differential pressure.

High flow rate, short reaction time.

Robust and reliable design.

Internal parts (tube, plunger, spring) in stainless steel.

NBR seals (or EPDM on request).

Compatible with most FCDE coils, including ATEX and low power electrical parts and IP67.

Solenoid valves can be mounted in any position. However, it is advisable to install them with the coil in a vertical position above the body.

STANDARDS

Connection	BSP threaded connection according to ISO 228-1.
-------------------	-------------------------------------------------

The photographs and technical art works are not contractual. The specifications of the presented products are open to modifications without previous advice

Tecofi France

83 rue Marcel Mérieux - 69960 Corbas
Tél. +33 (0)4 72 79 05 79 - Fax. +33 (0)4 78 90 19 19
E-mail : sales@tecofi.fr - www.tecofi.fr

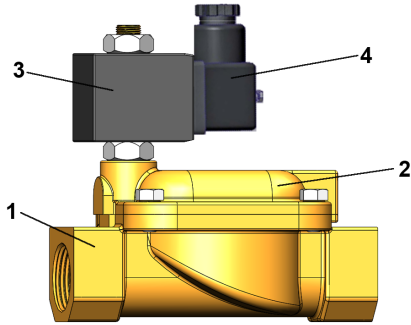


FEMALE BSP SOLENOID VALVE

TECHNICAL PASSPORT

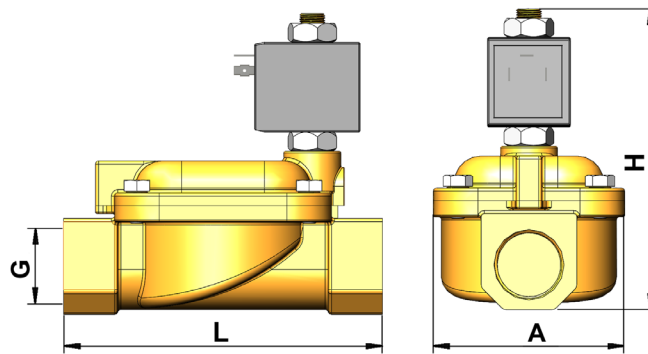
EV1140

CONSTRUCTION



Pos.	Quantity	Description	Material
1	1	Body	Forged brass CW617N UNI EN 12165:98
2	1	Bonnet	Forged brass CW617N UNI EN 12165:98
3	1	Coil	Plastic covered
4	1	Connector	Plastic covered

DIMENSIONS



DN		Bore (mm)	L	A	H	G	Flow rate (m³/h)	Pressure mini (bar)	Minimum differential pressure (bar)	Weight (kg)
mm	inch									
10	3/8"	13	69	40	99.5	3/8"	3.0	0.1	20	0.55
15	1/2"	13	72	40	101.5	1/2"	3.0	0.1	20	0.58
20	3/4"	20	100	65	107.0	3/4"	8.4	0.1	20	1.02
25	1"	25	104	65	112.5	1"	9.6	0.1	20	1.08
32	1"1/4	35	145	102	134.0	1"1/4	25.2	0.1	10	3.15
40	1"1/2	40	145	102	134.0	1"1/2	30.0	0.1	10	2.90
50	2"	50	173	118	148.0	2"	37.2	0.1	10	4.30
65	2"1/4	65	245	184	195.0	2"1/4	66.0	0.2	10	13.60
80	3"	75	250	184	195.0	3"	80.0	0.2	10	11.90

WORKING CONDITIONS

Maximum working pressure: 20 bar (from DN3/8" to DN1")
10 bar (from DN1"1/4 to DN3")

Maximum working temperature: +90°C in standard (NBR)
+140°C in option (EPDM)

Tecofi France

83 rue Marcel Mérieux - 69960 Corbas
Tél. +33 (0)4 72 79 05 79 - Fax. +33 (0)4 78 90 19 19
E-mail : sales@tecofi.fr - www.tecofi.fr

