

# FEMALE BSP SOLENOID VALVE

## TECHNICAL PASSPORT

EV1110

### SOLENOID VALVE NORMALLY CLOSED BSP THREADED CONNECTION

#### APPLICATION

Solenoid valves are used for applications requiring perfect control of fluid flow.

**Area of use:** water distribution network, irrigation system, power generation, plumbing industrial washing machines, car wash plants, cooling of machine tools, water jet cleaners, autoclaves, irrigation systems, etc..



**Fluids :** Clear water, hot water, steam, light oils.



#### GENERAL CHARACTERISTICS

**Range :** from DN3/8" to DN2".

Directly operated coupled diaphragm valve.

Operated without differential pressure closed.

High flow rate, short reaction time.

Robust and reliable design.

Internal parts (tube, plunger, spring) in stainless steel.

NBR seals (or EPDM, FPM on request).

Protection class IP65.

The solenoid valves are mounted on horizontal piping in the direction indicated by the arrow on the body with the coil on top.

#### STANDARDS

<b>Connection</b>	BSP threaded connection according to ISO 228-1.
<b>Connector</b>	Coil connection with connector DIN 43650

#### Tecofi France

83 rue Marcel Mérieux - 69960 Corbas  
Tél. +33 (0)4 72 79 05 79 - Fax. +33 (0)4 78 90 19 19  
E-mail : sales@tecofi.fr - [www.tecofi.fr](http://www.tecofi.fr)

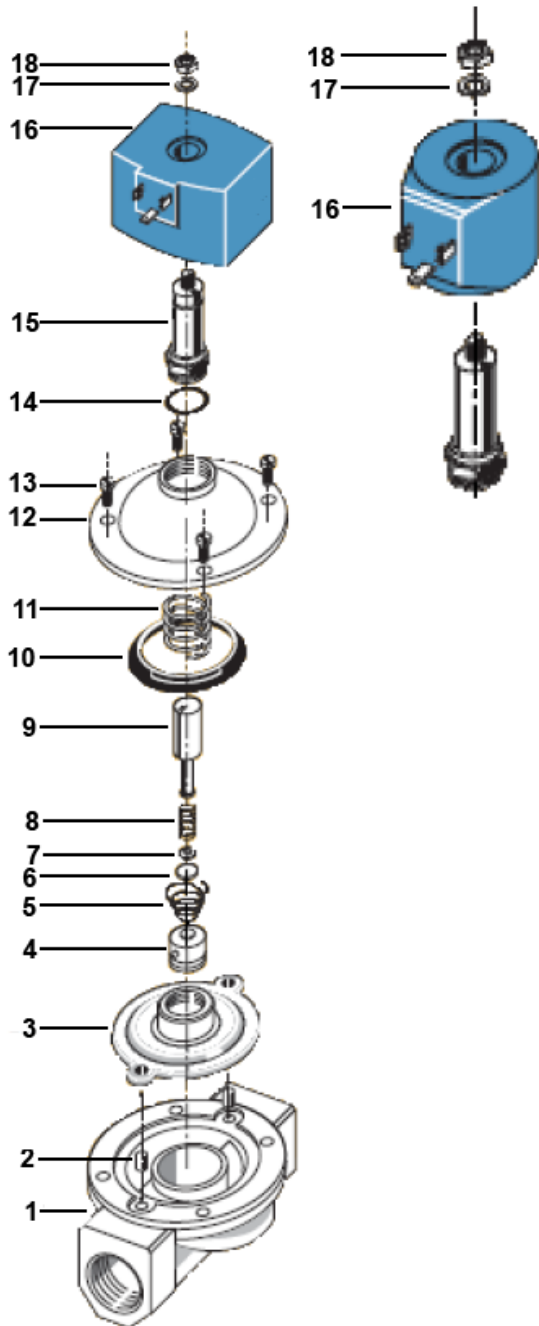


## FEMALE BSP SOLENOID VALVE

### TECHNICAL PASSPORT

EV1110

#### CONSTRUCTION



Pos.	Description	Material
1	Body	Brass CW 617N
2	Bush	Stainless steel
3	Diaphragm	NBR
4	Bush	Stainless steel
5	Spring	Steel
6	Seal	NBR
7	Support	Stainless steel
8	Spring	Steel
9	Plunger	Stainless steel
10	Ring	Stainless steel
11	Spring	Steel
12	Cover	Brass CW 617N
13	Screw	Stainless steel
14	O-ring	FPM
15	Tube guide	Stainless steel AISI 430
16	Coil	PBT + 30% glass fiber
17	Washer	Zinc plated steel
18	Lock nut	Zinc plated steel

The photographs and technical art works are not contractual. The specifications of the presented products are open to modifications without previous advice

**Tecofi France**

83 rue Marcel Mérieux - 69960 Corbas  
 Tél. +33 (0)4 72 79 05 79 - Fax. +33 (0)4 78 90 19 19  
 E-mail : sales@tecofi.fr - [www.tecofi.fr](http://www.tecofi.fr)



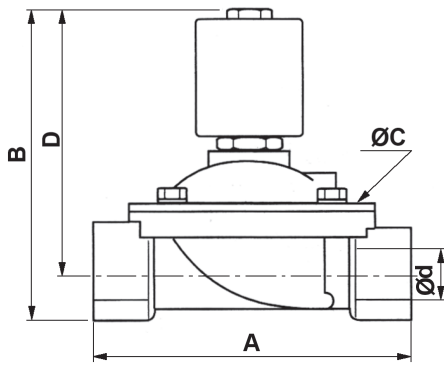
EV1110\_EN // Réalisé le 19/03/2024 // Version A

## FEMALE BSP SOLENOID VALVE

### TECHNICAL PASSPORT

EV1110

#### DIMENSIONS



DN		Øb	A	B	ØC	D	Weight (kg)
mm	inch						
10	3/8"	12	61	105	48	92	0.68
15	1/2"	12	61	105	48	92	0.66
20	3/4"	20	100	110	80	93	1.10
25	1"	25	100	116	80	96	1.20
32	1"1/4	36	146	200	128	170	5.20
40	1"1/2	39	146	200	128	170	5.00
50	2"	51	174	216	146	180	6.50

#### HYDRAULIC CHARACTERISTICS

DN		Kv (m <sup>3</sup> /h)	Maximum differential pressure (bar)		Coil	Operating time (s)
mm	inch		C.A.	C.C.		
10	3/8"	2.20	5	5	B12	2.-60 ms
15	1/2"	2.20	5	5	B12	2.-60 ms
20	3/4"	5.50	4	2	B12	2.-60 ms
25	1"	7.50	4	2	B12	2.-60 ms
32	1"1/4	17.5	4	2	B60	50-80 ms
40	1"1/2	19.0	4	2	B60	50-80 ms
50	2"	32.4	4	2	B60	50-80 ms

#### ELECTRIC CHARACTERISTICS

Coil	Current	Available voltage (V)						Frequency		Power consumption	
		C.A.			C.C.					Holding	Rush
B 12	AC Coil	12	24	48	110	230	380	50 Hz	60 Hz	18 VA	47 VA
	DC Coil	12	24		110			na		21 W	
B 60	AC Coil		24	48	110	230	380	50 Hz	60 Hz		430 VA
	DC Coil	12	24					na		43 W	

Coil classified H, Duty 100%. Connecting bu connector T30.

**Tecofi France**

83 rue Marcel Mérieux - 69960 Corbas  
 Tél. +33 (0)4 72 79 05 79 - Fax. +33 (0)4 78 90 19 19  
 E-mail : sales@tecofi.fr - [www.tecofi.fr](http://www.tecofi.fr)



# FEMALE BSP SOLENOID VALVE

## TECHNICAL PASSPORT

EV1110

### WORKING CONDITIONS

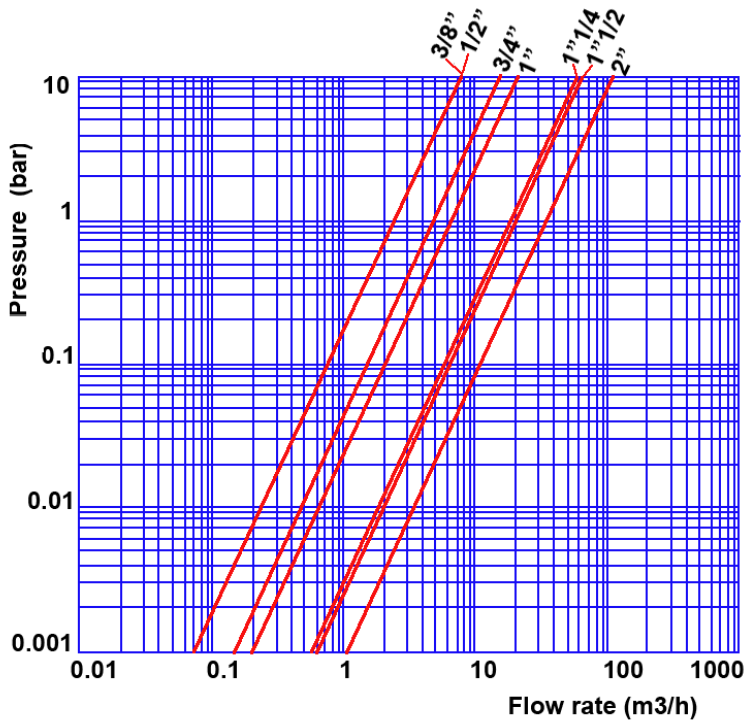
Fluid pressure : 0 - 10 bar

Maximum working temperature: -5°C / +80°C (NBR)  
-5°C / +110°C (EPDM)  
-5°C / +150°C (FPM)

Ambient working temperature : -10°C / +80°C

**(In direct current, over 40°C of ambient temperature, the maximum differential pressure can be reduced.)**

### HEAD LOSS DIAGRAMM



The photographs and technical art works are not contractual. The specifications of the presented products are open to modifications without previous advice

### Tecofi France

83 rue Marcel Mérieux - 69960 Corbas  
Tél. +33 (0)4 72 79 05 79 - Fax. +33 (0)4 78 90 19 19  
E-mail : sales@tecofi.fr - [www.tecofi.fr](http://www.tecofi.fr)

